

LEASEHOLD



Flat

**43 APOLLO  
AVENUE,  
PETERBOROUGH,  
PE2 8GA**

**£112,500**

FEATURES



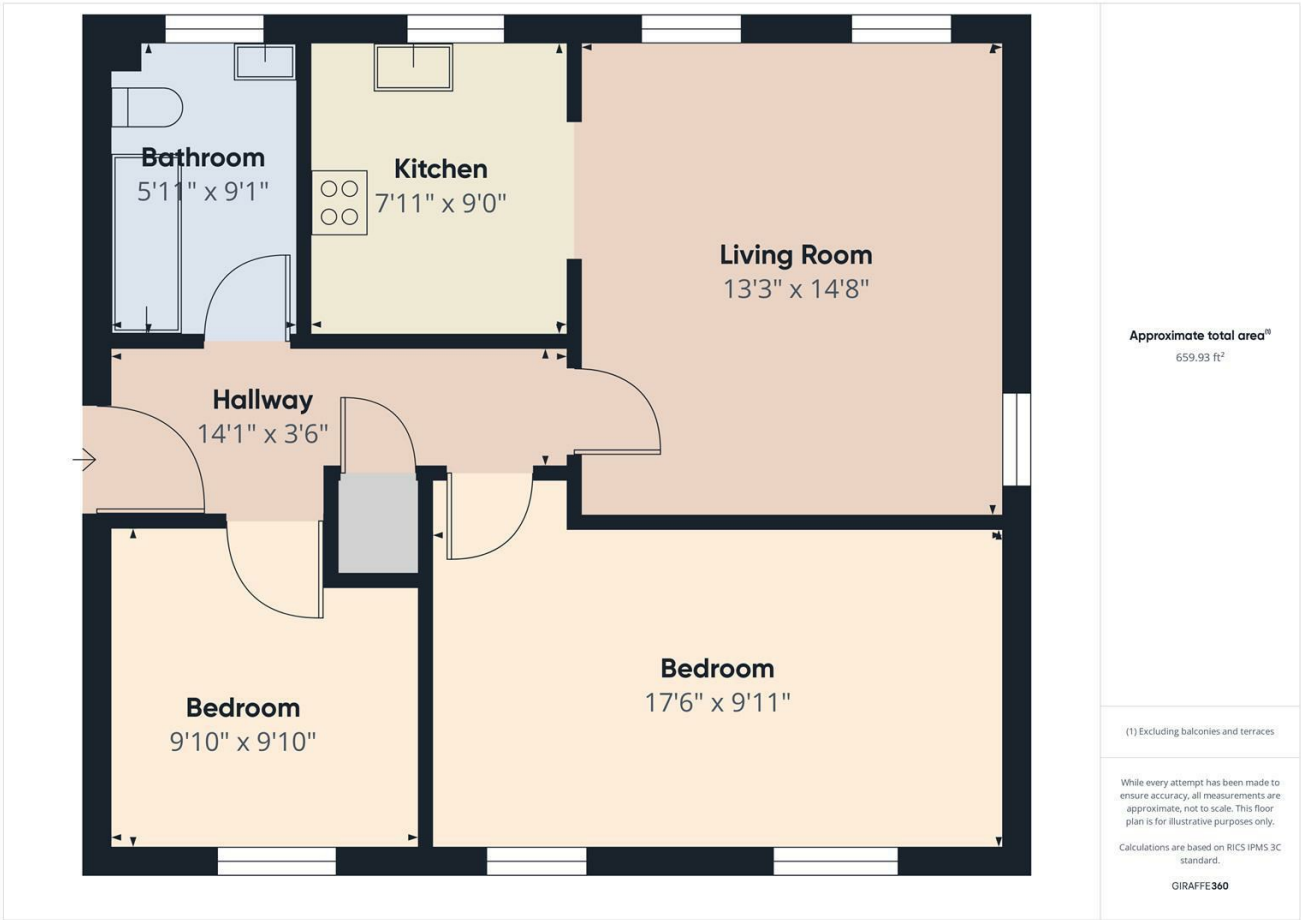
**Bellavie**  
HOMES  
ESTATE AGENTS

# 2 Bedroom Flat located in Peterborough

75% Shared Ownership\* Nestled in a very sought after area this charming apartment on Apollo Avenue offers a delightful blend of modern living and comfort. The property boasts a spacious large master bedroom, providing a serene retreat for relaxation and rest. The very modern bathroom is designed with contemporary fixtures, ensuring a stylish and functional space for your daily routines.

The large lounge serves as the heart of the home, perfect for entertaining guests or enjoying quiet evenings with family. Its generous size allows for versatile furniture arrangements, making it an inviting space for all occasions.

Living in this popular area means you will benefit from a friendly community atmosphere, with local amenities and transport links conveniently close by. This property is an excellent opportunity for those seeking a comfortable and modern home in a desirable location. Don't miss the chance to make this lovely house your new home



Call us on  
**01733 306 306**

[hello@bellaviehomes.co.uk](mailto:hello@bellaviehomes.co.uk)  
[www.bellaviehomes.co.uk](http://www.bellaviehomes.co.uk)

**Council Tax Band**  
**A**

Energy Efficiency Rating		
	Current	Potential
Very energy efficient - lower running costs		
(92 plus) <b>A</b>		
(81-91) <b>B</b>		
(69-80) <b>C</b>		
(55-68) <b>D</b>		
(39-54) <b>E</b>		
(21-38) <b>F</b>		
(1-20) <b>G</b>		
Not energy efficient - higher running costs		
England & Wales		EU Directive 2002/91/EC

Agents Note: Whilst every care has been taken to prepare these particulars, they are for guidance purposes only. All measurements are approximate and are for general guidance purposes only and whilst every care has been taken to ensure their accuracy, they should not be relied upon and potential buyers are advised to recheck the measurements.

**Bellavie**  
HOMES  
ESTATE AGENTS