



Old Castle Road | | Weymouth | DT4 8QE

Offers Over £550,000

BEAUMONT  JONES

**Old Castle Road |
Weymouth | DT4 8QE
Offers Over £550,000**

We are delighted to offer this four bedroom detached house located in Old Castle Road. Positioned directly opposite Sandsfoot Gardens with views over towards Sandsfoot Castle and Portland Harbour beyond.

- Views over Sandsfoot Gardens, Castle & out to Portland Harbour
- Well-presented Through out
- Modern Recently Fitted Kitchen
- Lovely Rear Garden
- Four Bedrooms
- Family Bathroom & Additional Shower Room
- Off-Road Parking for Circa Two Cars

Accommodation

We are delighted to offer this four bedroom detached house located in Old Castle Road. Positioned directly opposite Sandsfoot Gardens with views over towards Sandsfoot Castle and Portland Harbour beyond.

Rating Authority: - Dorset (Weymouth & Portland) Council. Currently on Business Rates.

Services: - Gas central heating. Mains electric &



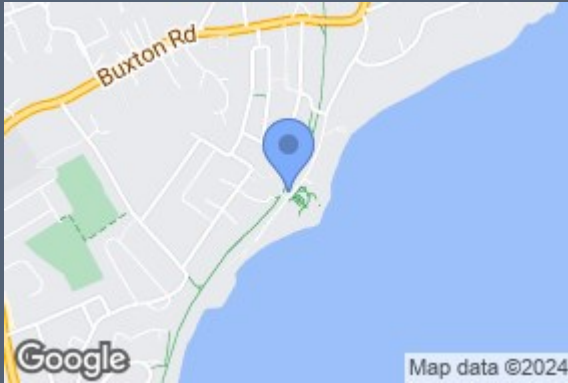
A well presented four bedroom detached house located in Old Castle Road, opposite Sandsfoot Gardens & Castle with views out to Portland Harbour.



drainage.

Disclaimer: - Beaumont Jones and their clients have no authority to make or give any representations or warranties in relation to the property. These particulars do not form part of any offer or contract and must not be relied upon as statements or representations of fact. Any areas, measurements or distances are approximate. The text, photographs, plans and measurements are for guidance only and are not necessarily comprehensive. It should be assumed that the property has all necessary Planning, Building Regulations or other consents, and Beaumont Jones have not tested any services, equipment or facilities.

Beaumont Jones is a member of The Property Ombudsman scheme and subscribe to The Property Ombudsman Code of Practice.

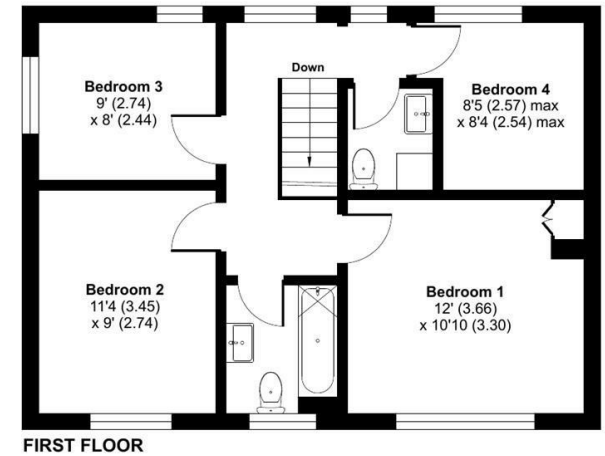
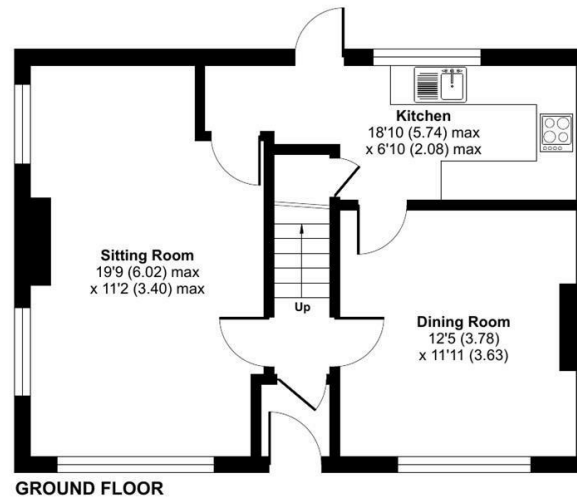


Energy Efficiency Rating		Current	Potential
Very energy efficient - lower running costs			
(92 plus) A			83
(81-91) B			
(69-80) C		70	
(55-68) D			
(39-54) E			
(21-38) F			
(1-20) G			
Not energy efficient - higher running costs			
England & Wales		EU Directive 2002/91/EC	

Old Castle Road, Weymouth, DT4

Approximate Area = 1098 sq ft / 102 sq m

For identification only - Not to scale



Floor plan produced in accordance with RICS Property Measurement Standards incorporating International Property Measurement Standards (IPMS2 Residential). © rinchecom 2024. Produced for Avenue Sales and Lettings. REF: 1101743

We value more than your property

33 St Thomas Street
Weymouth
Dorest
DT4 8EJ
01305 787434
sales@beaumontjones.co.uk
www.beaumontjones.co.uk