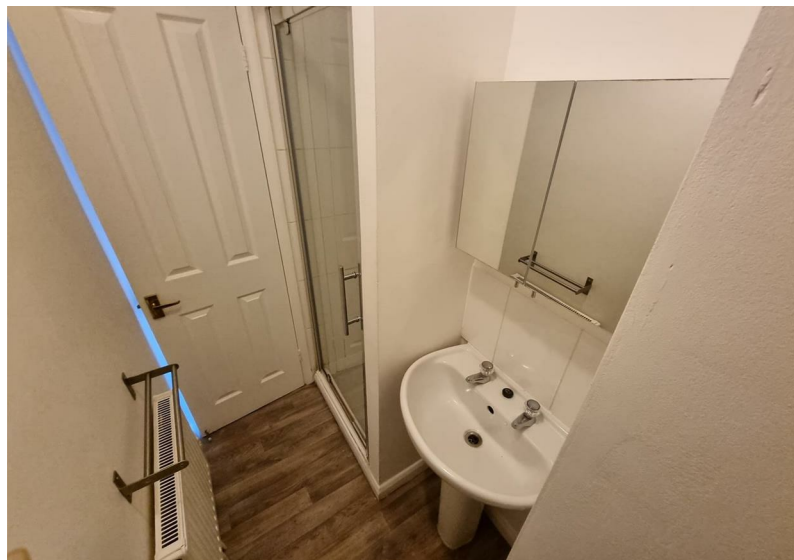
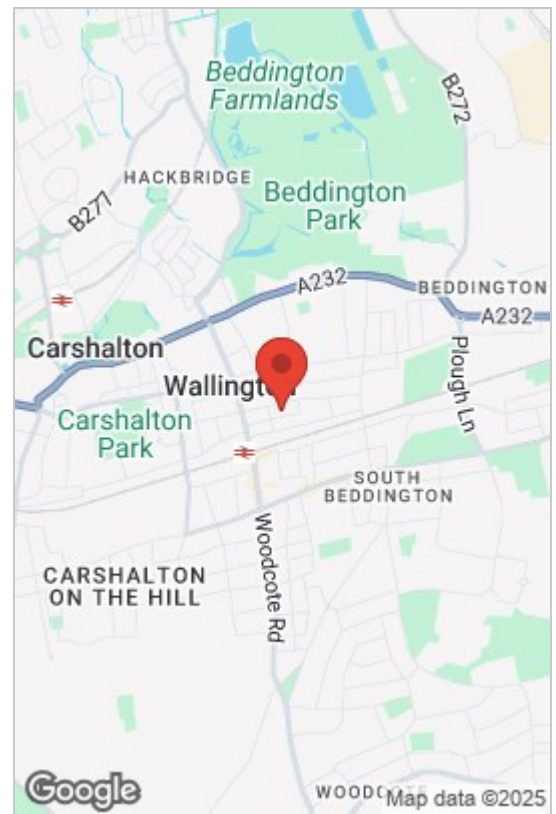




Belmont Road, SM6 8TE
£1,095 Per Month

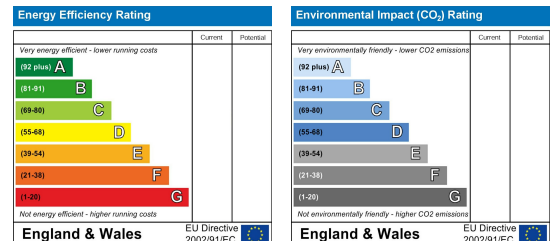




- Self contained Studio
- Large Studio Room
- Shower room
- Gas central heating included
- Excellent Decor
- Own Front Door
- Separate Kitchen with appliances
- Shared garden
- Close to Town Centre

Mercer Taylor are delighted to offer this lovely ground floor studio flat with its own front door to rent in Wallington. Comprising a spacious double bedroom, modern fitted kitchen with appliances, shower room with w.c. and wash hand basin, and a shared garden. Other benefits include gas central heating, double glazed windows and an excellent location. Wallington Railway Station and the High Street are only a few minutes walk away, as well as other local restaurants and amenities. This property comes furnished or unfurnished and has gas central heating and water included within the price. Perfect for single occupancy or a couple, call now to avoid disappointment.

Council Tax Band:



These particulars, whilst believed to be accurate are set out as a general outline only for guidance and do not constitute any part of an offer or contract. Intending purchasers should not rely on them as statements of representation of fact, but must satisfy themselves by inspection or otherwise as to their accuracy. No person in this firm's employment has the authority to make or give any representation or warranty in respect of the property.