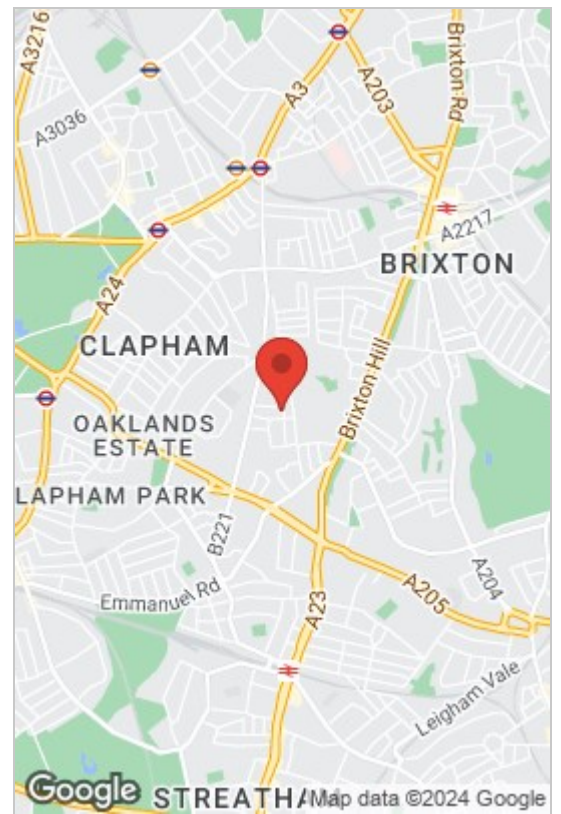




Rosebery Road, London, SW2 4DG
£4,000 Per Month

 4  1  1 

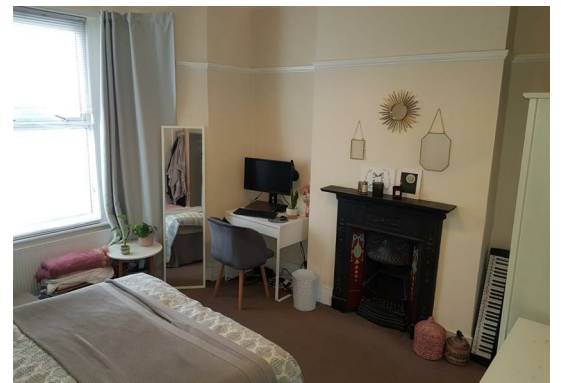




- 4 Double bedrooms
- Well fitted kitchen with dishwasher
- Ground floor cloakroom
- Gas central heating
- Large open plan lounge, kitchen and dining area.
- Good size bathroom with shower
- Rear garden
- Prime location



Spacious, well presented four double bedroom house to rent in Clapham comprising, large open plan living/dining room and kitchen with modern units and appliances including dishwasher, and double doors to the garden, ground floor cloak room, large family bathroom and private rear garden. Gas central heating, double glazed windows.



Council Tax Band: E

Energy Efficiency Rating			Environmental Impact (CO ₂) Rating		
Very energy efficient - lower running costs	Current	Potential	Very environmentally friendly - lower CO ₂ emissions	Current	Potential
(92 plus) A			(92 plus) A		
(81-91) B			(81-91) B		
(69-80) C			(69-80) C		
(55-68) D			(55-68) D		
(39-54) E			(39-54) E		
(21-38) F			(21-38) F		
(1-20) G			(1-20) G		
Not energy efficient - higher running costs			Not environmentally friendly - higher CO ₂ emissions		
England & Wales	EU Directive 2002/91/EC		England & Wales	EU Directive 2002/91/EC	

These particulars, whilst believed to be accurate are set out as a general outline only for guidance and do not constitute any part of an offer or contract. Intending purchasers should not rely on them as statements of representation of fact, but must satisfy themselves by inspection or otherwise as to their accuracy. No person in this firm's employment has the authority to make or give any representation or warranty in respect of the property.