



Kettering Street, London, SW16 6PZ

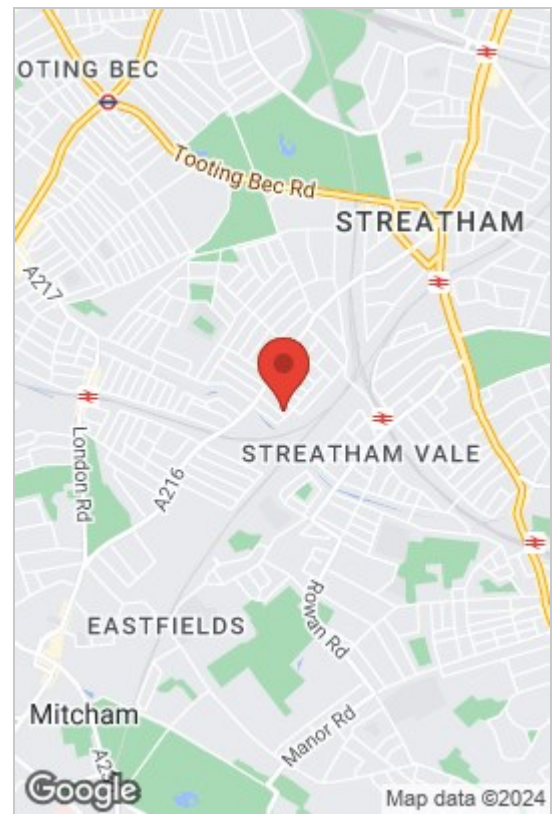
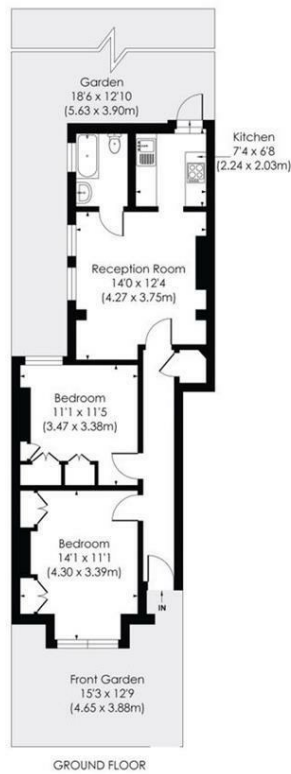
£1,600 Per Month

 2  1  1 



KETTERING STREET, SW16

Approx. Gross Internal Floor Area
615 Sq. ft/57.18 Sq. m



- Two Double Bedrooms
- Private Rear garden
- Newly Decorated Throughout
- Close To Local Shops
- Separate Lounge
- Fitted Kitchen
- Gas Central Heating

Lovely Ground floor two bedroom maisonette for sale in the Furzedown catchment area. The property comprises two double bedrooms, separate living room, kitchen, family bathroom and a private rear garden. Just a few minutes walk to local buses, Streatham common train station and local shops and amenities are all within easy reach. Redecorated throughout this is must see.



Council Tax Band: B

Energy Efficiency Rating			Environmental Impact (CO ₂) Rating		
Very energy efficient - lower running costs	Current	Potential	Very environmentally friendly - lower CO ₂ emissions	Current	Potential
(92 plus) A			(92 plus) A		
(81-91) B			(81-91) B		
(69-80) C			(69-80) C		
(55-68) D			(55-68) D		
(39-54) E			(39-54) E		
(21-38) F			(21-38) F		
(1-20) G			(1-20) G		
Not energy efficient - higher running costs			Not environmentally friendly - higher CO ₂ emissions		
England & Wales	EU Directive 2002/91/EC		England & Wales	EU Directive 2002/91/EC	

These particulars, whilst believed to be accurate are set out as a general outline only for guidance and do not constitute any part of an offer or contract. Intending purchasers should not rely on them as statements of representation of fact, but must satisfy themselves by inspection or otherwise as to their accuracy. No person in this firm's employment has the authority to make or give any representation or warranty in respect of the property.