

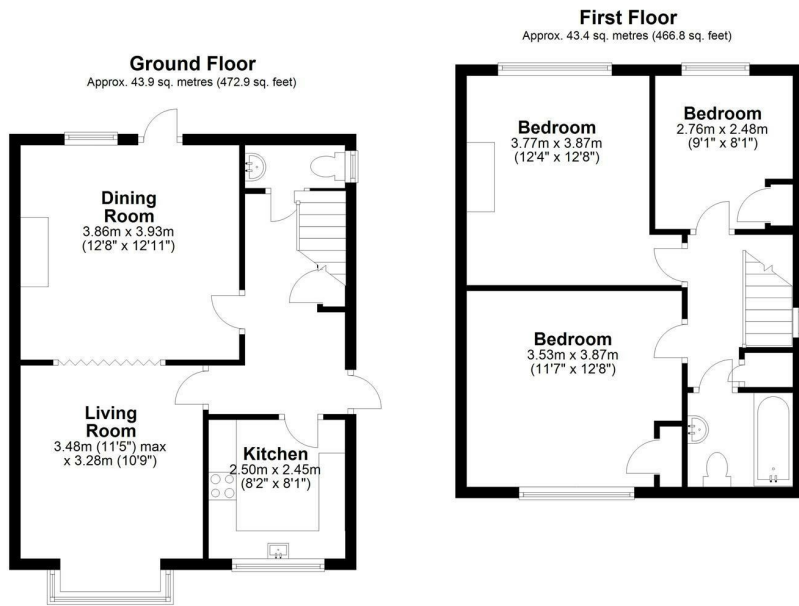


Eswyn Road, London, SW17 8TR

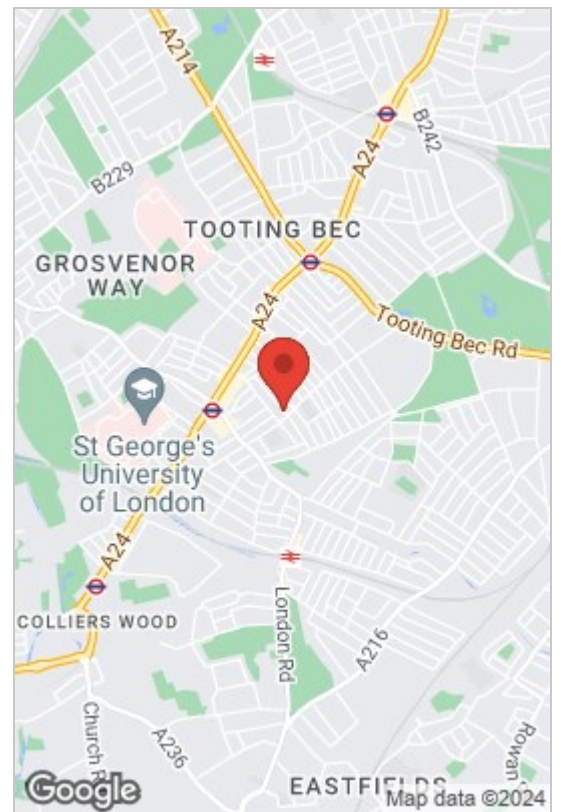
£2,300 Per Month

 3  1  1  D





Total area: approx. 87.3 sq. metres (939.8 sq. feet)

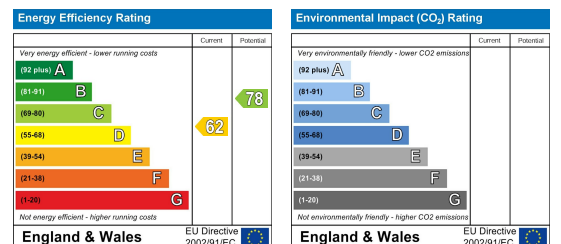


- Three Bedroom House
- Two Double Bedrooms
- Two Double Reception Rooms
- Front and Rear Private Garden
- Prime Location
- Separate Kitchen Area

New to the market is this spacious three bedroom house to rent in the heart of Tooting. Comprising three good-sized doubles, two separate reception rooms, modern fitted kitchen with appliances, tiled bathroom suite, downstairs W.C and large south facing private rear garden. Other benefits include gas central heating, double glazed windows, side gate access and excellent transport links into Central London. Located only a short walk away from Tooting Underground and Railway Stations, local restaurants, shops and amenities. Perfect for professional sharers or a family.



Council Tax Band: D



These particulars, whilst believed to be accurate are set out as a general outline only for guidance and do not constitute any part of an offer or contract. Intending purchasers should not rely on them as statements of representation of fact, but must satisfy themselves by inspection or otherwise as to their accuracy. No person in this firm's employment has the authority to make or give any representation or warranty in respect of the property.