

mercero taylor

Established 1921

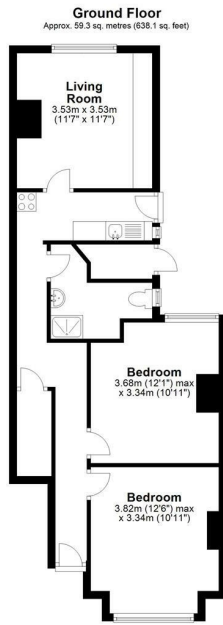
Residential & Commercial · Estate Agents & Valuers · Lettings & Management



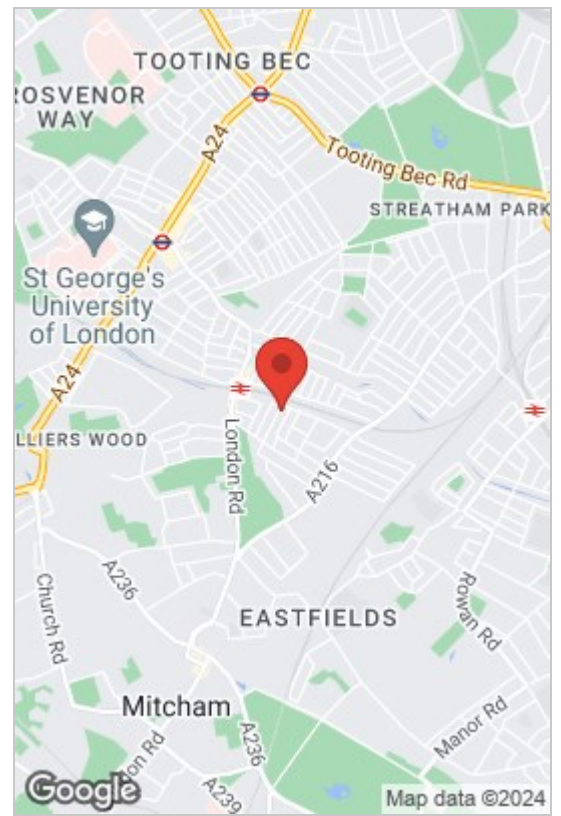
Tynemouth Road, Surrey, CR4 2BN
£375,000

 2  1  1  C





Total area: approx. 59.3 sq. metres (638.1 sq. feet)



- Ground Floor
- Reception Room
- Close to Transport
- Rear Garden
- No Chain
- 2 Double Bedrooms
- Gas Central Heating
- Near Figges Marsh
- Merton Borough
- Recently Decorated

Ground floor maisonette with 2 double bedrooms, lounge / dining room, kitchen and bathroom fitted as a wet room. Stripped wood floors, shared rear garden, gas central heating. The property has scope for improvement and would make an excellent investment or first time buy with the opportunity to make the property your own.

Situated with walking distance of Figges Marsh, Tooting railway station and multiple shops.



Council Tax Band: C

Energy Efficiency Rating			Environmental Impact (CO ₂) Rating		
Very energy efficient - lower running costs	Current	Potential	Very environmentally friendly - lower CO ₂ emissions	Current	Potential
(92 plus) A			(92 plus) A		
(81-91) B			(81-91) B		
(69-80) C			(69-80) C		
(55-68) D			(55-68) D		
(39-54) E			(39-54) E		
(21-38) F			(21-38) F		
(1-20) G			(1-20) G		
Not energy efficient - higher running costs			Not environmentally friendly - higher CO ₂ emissions		
England & Wales	EU Directive 2002/91/EC		England & Wales	EU Directive 2002/91/EC	

These particulars, whilst believed to be accurate are set out as a general outline only for guidance and do not constitute any part of an offer or contract. Intending purchasers should not rely on them as statements of representation of fact, but must satisfy themselves by inspection or otherwise as to their accuracy. No person in this firm's employment has the authority to make or give any representation or warranty in respect of the property.