



Poundbury Crescent, Dorchester

Dorchester

Modern Two-Bedroom Ground Floor
Apartment with Private Garden –
Convenient for Dorchester Hospital

A beautifully presented two double bedroom ground floor apartment, perfectly positioned for easy access to Dorchester town centre, Poundbury, and Dorchester Hospital. Ideal for professionals, downsizers, or first-time buyers, this modern home offers comfortable living with the added benefit of a private rear garden and allocated parking.

Inside, the property offers:

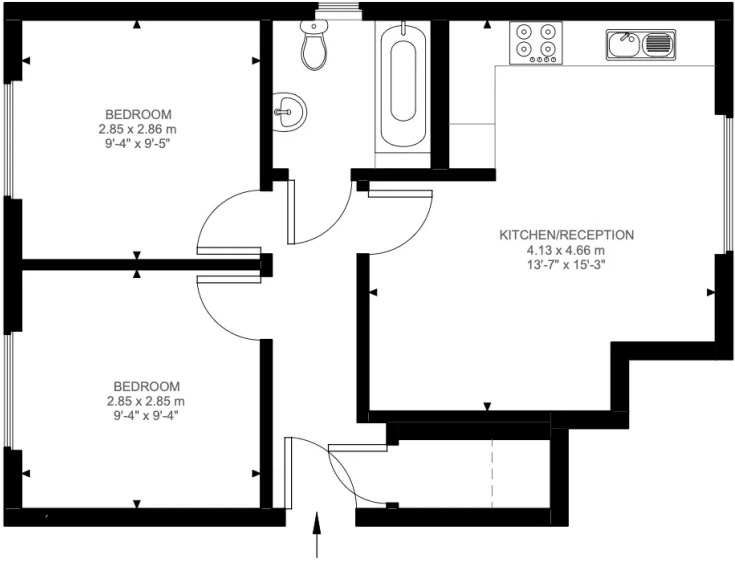
Two double bedrooms, both light, well-proportioned, and ideal for flexible use. A spacious open-plan kitchen/living area, featuring a fully fitted kitchen with integrated appliances including fridge/freezer, electric oven, hob, extractor, and washing machine. A modern bathroom with a panel bath and shower over, wash hand basin, WC, and heated towel rail. Further benefits include gas central heating, double glazing, and allocated off-road parking for one vehicle.

About Dorchester:

Dorchester is the historic county town of Dorset, offering a blend of period charm and modern convenience. The town is home to independent shops, cafés, restaurants, and a range of cultural attractions, including several museums and galleries. Excellent transport links are available, with two train stations providing services to London Waterloo and Bristol. The nearby Jurassic Coast and surrounding countryside make Dorchester a fantastic base for both work and leisure.







Poundbury Crescent, DT1
Approximate Gross Internal Area
45.29 SQ.M / 488 SQ.FT

KEY: CH = Ceiling Height
Restricted Head Height

Illustration for identification purposes only. Not to scale.
Floor Plan Drawn According To RICS Guidelines.