



Louise Road, Dorchester

Dorchester

Bedrooms: 3

Bathrooms: 1

Receptions: 2

Situated in a popular residential area of Dorchester, close to shops, a pharmacy, doctors and well-regarded schools, this three-bedroom detached bungalow with loft room offers flexible accommodation, a private garden, and convenient access to local amenities.

The property is approached via a useful porch area with storage and space for coats and shoes, leading into an inviting open-plan kitchen/diner. The kitchen is well designed with space for appliances including a dishwasher, fridge, and fridge freezer, and flows through to a spacious sunroom with skylight. This bright and versatile room enjoys direct access to the South facing garden and includes an under-stairs utility area with space for a washing machine and dryer, as well as housing the boiler.

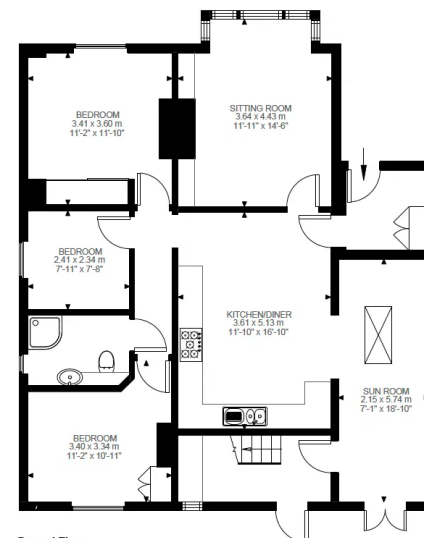
To the front of the bungalow, a separate sitting room offers a comfortable reception space.

From the hallway, there are three well-proportioned bedrooms – two doubles with fitted wardrobes and a single currently used as a home office. The accommodation is completed by a family shower room and access to a converted versatile loft room, also providing excellent extra storage together with a handy W.C.

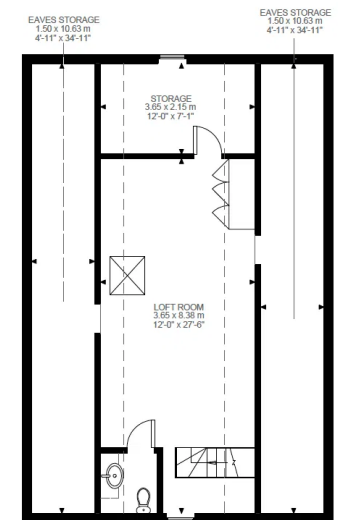
The South facing rear garden is partly laid to lawn with a generous patio area, ideal for entertaining or relaxing outdoors. Side access leads to the front of the property, which includes a parking space and a pretty front garden with flower borders.







Ground Floor
1042 ft²



First Floor
419 ft²

Louise Road, DT1
Approximate Gross Internal Area
135.73 SQ.M / 1461 SQ.FT
(EXCLUDING EAVES STORAGE)
EAVES STORAGE: 34.65 SQ.M / 373 SQ.FT
INCLUSIVE TOTAL AREA 170.38 SQ.M / 1834 SQ.FT

KEY: CH = Ceiling Height
Restricted Head Height

Illustration for identification purposes only. Not to scale.
Floor Plan Drawn According To RICS Guidelines.