



Coade Street, Poundbury
Dorchester

Bedrooms: 3 | Bathrooms: 1 | Receptions: 1

Beautifully Presented Three-Bedroom Terraced House – Shared Ownership, Dorset

Located in Dorset with a local connection requirement, the property is beautifully presented and enjoys a south-west facing garden and two allocated parking spaces.

A spacious and light hallway welcomes you into the home, leading to a convenient downstairs cloakroom, an understairs storage cupboard and a separate shoe cupboard.

The living room is spacious and comfortable, with plush carpet flooring, TV point, and sash windows that fill the space with natural light.

At the heart of the home is the kitchen/diner, fitted with a range of modern units and high-quality integrated appliances including a fridge/freezer, dishwasher, washer/dryer and electric oven with hob. A composite sink and practical larder cupboard add further functionality. There's also a cleverly designed built-in dining table with storage underneath and a radiator – perfect for warming boots on cooler days. A door opens directly to the garden, making it ideal for indoor/outdoor living.

Upstairs, three well-proportioned bedrooms are finished in soft grey carpets, offering plenty of space for family living or home working. The first floor also benefits from a laundry cupboard, providing useful storage and practicality. The family bathroom is stylishly presented with a modern white suite, shower over bath, neutral tiling and laminate flooring.

The loft is boarded with a fitted wooden ladder for easy access, creating excellent additional storage space.

Outside

The south-west facing rear garden is a real highlight, featuring lawn, flower beds and a patio area for summer dining and relaxing. The property also benefits from two allocated parking spaces located to the rear.





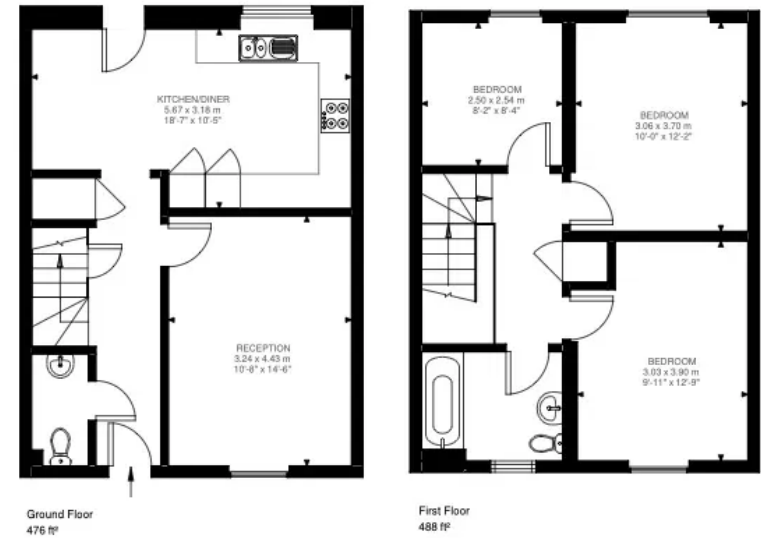
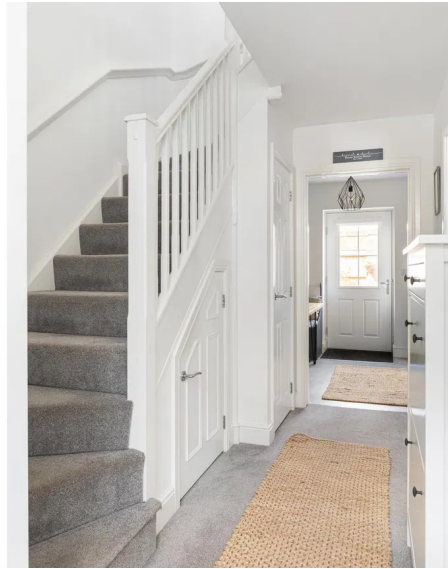
About Dorchester & Poundbury

Dorchester is the historic and vibrant county town of Dorset, offering a fantastic mix of culture, convenience and community. The town boasts a wide range of shops, cafés, restaurants, museums and theatres, alongside Brewery Square and the forthcoming Charles Street development for modern shopping and dining. Excellent transport links include two mainline railway stations to London Waterloo and Bristol.

To the west of the town lies Poundbury, the pioneering development initiated by King Charles III (formerly the Prince of Wales). Designed to combine traditional architecture with modern community living, Poundbury offers an excellent range of independent shops, cafés, restaurants, a medical centre and Waitrose supermarket. Its strong sense of community and attractive streets make it one of the most desirable places to live in the area.

With the stunning Dorset countryside and Jurassic Coast within easy reach, this location is perfect for both families and professionals.





Coads Street, DT1
Approximate Gross Internal Area
89.60 SQ.M / 964 SQ.FT

Illustration for identification purposes only. Not to scale.
Floor Plan Drawn According To RICS Guidelines.

Max 25 Limited

07880 803 366

claire@max25.co.uk

<https://max25.co.uk>