



13 Symonds Court, Charminster

Offers Over £415,000

3 1 1



This charming detached bungalow offers three well-sized bedrooms, a newly extended sitting room, modern kitchen, and a generous wrap-around garden—all nestled in a sought-after village just outside Dorchester.

Upon entering, you're greeted by a newly fitted boot/utility room with built-in cupboards for ample storage. This leads to a bright hallway, guiding you to a beautifully modern kitchen with base and wall units, roll-top work surfaces, a gas hob with extractor, electric oven, integrated fridge/freezer, and washer/dryer. A Belfast sink with chrome taps overlooks the patio and pizza oven area of the garden.

From the hallway, doors lead to two double bedrooms—one with a cozy log burner—and a single bedroom currently used as an office. A well-appointed family bathroom is also accessible, complete with a bath, shower over, vanity wash hand basin, and low-level WC.

The highlight of the home is the newly extended sitting room with a skylight and doors opening into the garden, blending indoor and outdoor living seamlessly.

The generous wrap-around garden features an orchard area with fruit trees, a wildlife pond, and a patio with a pizza oven, all enclosed by hedgerows and fencing for privacy.

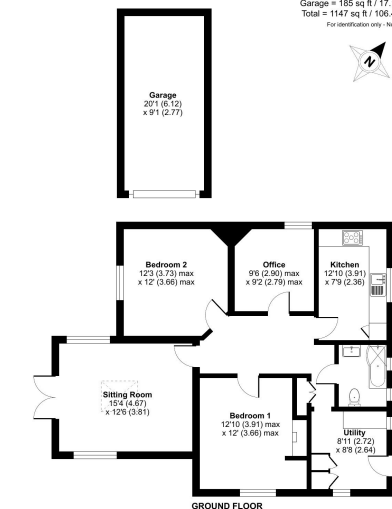
The front gate leads to a detached garage and a driveway with space for two vehicles.

Viewing is highly recommended!



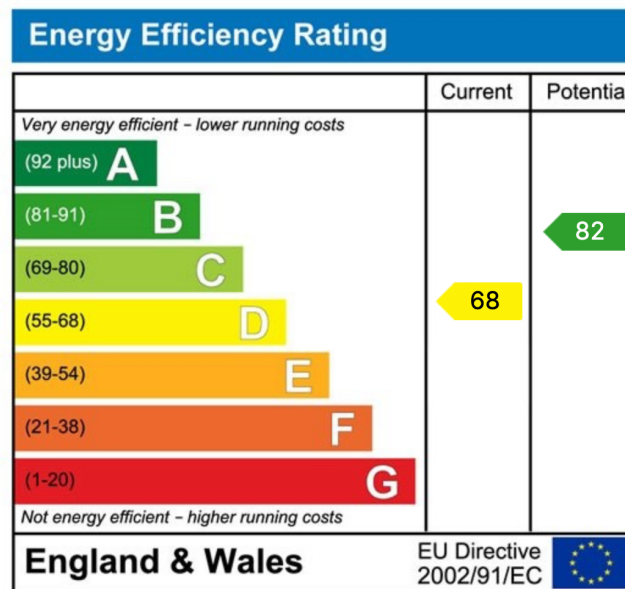
Symonds Court, Charminster, Dorchester, DT2

Approximate Area = 962 sq ft / 89.3 sq m
Garage = 185 sq ft / 17.1 sq m
Total = 1147 sq ft / 106.4 sq m
For identification only - Not to scale



GROUND FLOOR

- Generous Wrap Around Garden
- Newly Fitted Kitchen and Boot Room
- Popular Village Location
- Three Good Size Bedrooms
- Light and Spacious Sitting Room with a Skylight
- Pizza Oven, Patio Area and Herb Garden



"A bespoke Estate Agency offering great customer service and communication"

Tel 020 4587 7347
www.max25.co.uk

