





Queens Drive, Moreton, Dorchester, DT2 8FP

Offers Over £290,000

3 2 1





This charming and well-presented three double-bedroom property is perfectly situated in a quiet cul-de-sac within the highly sought-after village of Moreton. Boasting approximately 1,168 sq ft of living space across three floors, this spacious home offers versatile accommodation ideal for modern family living.

**Kitchen/Diner:** A bright, airy space with ample room for dining. Fitted with a range of wall and base units, integrated double oven, four-ring hob, and space for a fridge freezer, washing machine, and additional appliance.

A spacious and inviting living area featuring fitted shelving and direct access to the enclosed rear garden—perfect for relaxation and entertaining.

Convenient downstairs cloakroom and useful under-stairs storage.

**First Floor:** Two generously sized double bedrooms, one with built-in double wardrobes, plus a family bathroom complete with bath, shower attachment, WC, and wash hand basin.

**Second Floor Master Suite:** A spacious main bedroom featuring an en-suite bathroom with a panel-enclosed bath, shower attachment, WC, and wash hand basin. A handy storage cupboard is also located on the landing.

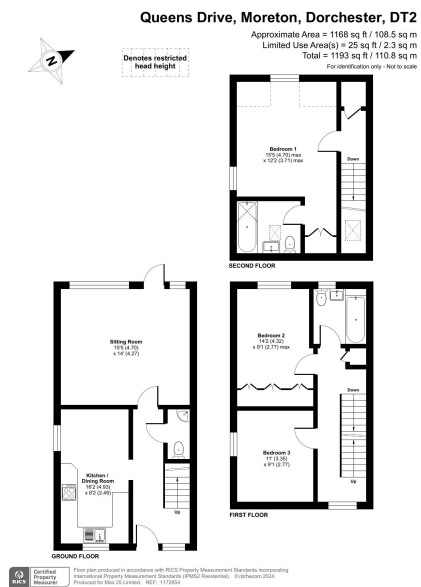
**Enclosed Rear Garden:** Low-maintenance garden mainly laid to lawn with a large shed and side pedestrian access. Overlooking peaceful woodlands, offering privacy and tranquillity.

**Parking:** Private driveway providing off-road parking for two cars.

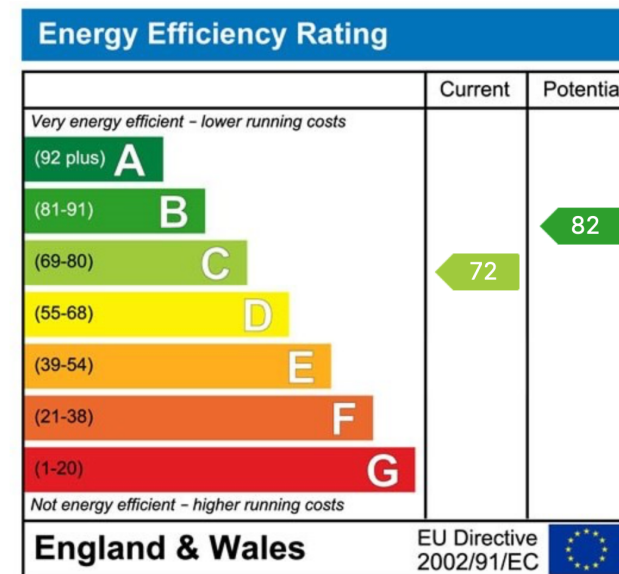
**Why You'll Love This Home:**

Spacious accommodation spread across three floors  
Peaceful cul-de-sac location with beautiful woodland views  
Convenient off-road parking for two cars  
Excellent transport links and charming village lifestyle





- Spacious Living Across Three Floors
- En-Suite to Master Bedroom
- Cul-De-Sac Position
- Three Double Bedrooms
- Enclosed Garden, Backing Onto Woodland
- Village Location



"A bespoke Estate Agency offering great customer service and communication"

Tel 020 4587 7347  
[www.max25.co.uk](http://www.max25.co.uk)

