



Monmouth Road, Dorchester

£325,000

3 1 2



A beautifully presented three-bedroom Victorian home situated on the popular Monmouth Road, just half a mile from Dorchester town centre. This charming and well-maintained property offers light-filled and flexible accommodation throughout, with a perfect balance of period character and modern touches.

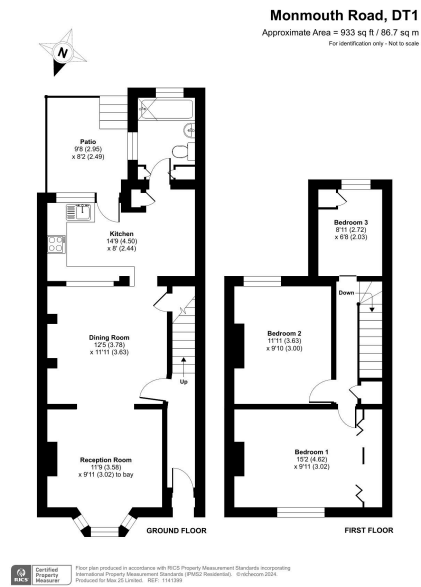
The front of the home features a bay-fronted sitting room with a feature fireplace and alcove shelving, which flows seamlessly into the open-plan dining and family room—an ideal space for both relaxing and entertaining. A modern kitchen sits to the rear of the property and provides direct access to the garden. The ground floor also benefits from a stylish bathroom with a bath, electric shower, WC and pedestal basin.

Upstairs, the property offers three well-proportioned bedrooms. The principal bedroom at the front features built-in storage and shelving, while the second double also provides additional storage. The third bedroom overlooks the rear garden, making it perfect for use as a bedroom, office, or nursery.

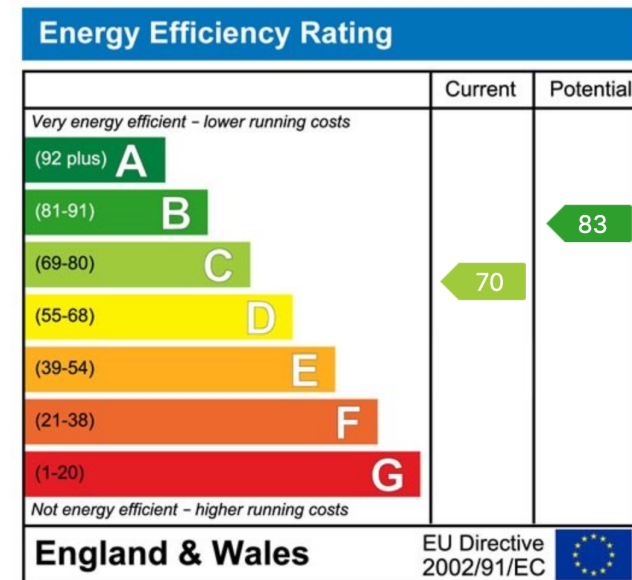
Outside, the generous rear garden is mainly laid to lawn with mature shrubs and borders, along with a useful storage shed and convenient rear access. The front garden is attractively landscaped with shingle and established planting, enhancing the property's kerb appeal.

Situated in the heart of Dorchester, Monmouth Road is just a short stroll from the town centre, scenic walking routes along the river, and a great selection of independent shops, cafes, restaurants, and local parks. Dorchester is well known for its rich history, characterful architecture, and strong sense of community, as well as excellent schooling and transport links—including mainline rail services to London Waterloo and Bristol. This charming home would be ideal for first-time buyers, small families, or anyone looking to enjoy modern living in one of Dorset's most historic and sought-after towns.





- Beautifully Presented Family Home
- Open Plan Dining/ Family Room
- Popular Location
- South Facing Garden
- Sitting Room With Bay Window
- Three Well Proportioned Bedrooms
- Victorian Character Property
- Full of Character



"A bespoke Estate Agency offering great customer service and communication"

Tel 020 4587 7347
www.max25.co.uk

