



Main Street, Broadmayne

Guide Price £325,000

3 1 1



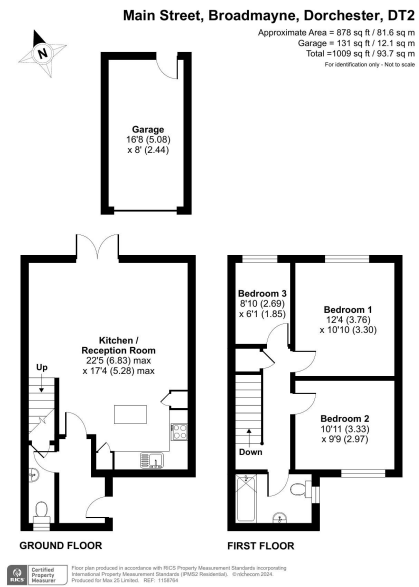
This beautiful home has been recently refurbished to a high standard throughout. Upon approaching the property, the double-glazed front door leads into a spacious porch area, housing the boiler and providing plenty of storage room. A further glass door opens into a spacious, light, and airy open-plan kitchen, living room, and dining area.

A door leads to a downstairs cloakroom, with a further door housing the utilities, currently being used as a utility room. The kitchen/ breakfast room is a good-sized room, transformed into one big open space and leading into the extended living area, creating the perfect family or entertaining space. The kitchen consists of a range of wall and base units, integrated NEFF appliances including a dishwasher, fridge freezer, and microwave oven. The integrated cooker and hob have an extraction hood over. The kitchen also benefits from a breakfast island with space for seating.

The living room is another fabulous feature of this property, with doors leading to the garden and stairs to the first floor. Situated on the first floor are three bedrooms and a family bathroom along with an airing cupboard. The bedrooms are all good sizes, with two doubles and a single room, all finished to the same high standard as the rest of the house.

The family bathroom is fitted with a white suite comprising a modern paneled bath with shower over, WC, and pedestal wash hand basin. It is fully tiled and includes a heated towel rail. Externally, there is a pretty garden, featuring paving, decking, and a pergola. The path leads around to the rear access to the garage, which has eaves storage, electricity, and a remote-controlled door for ease of use. The property also benefits from a parking space in front of the garage to the rear of the house.





- Very Well Presented Family Home
- Three Good-Sized Bedrooms
- Modern Kitchen
- Garage & Parking
- Open-Plan Living Area
- Recently Renovated To a High Standard
- Pretty Garden
- Popular Village Location

