



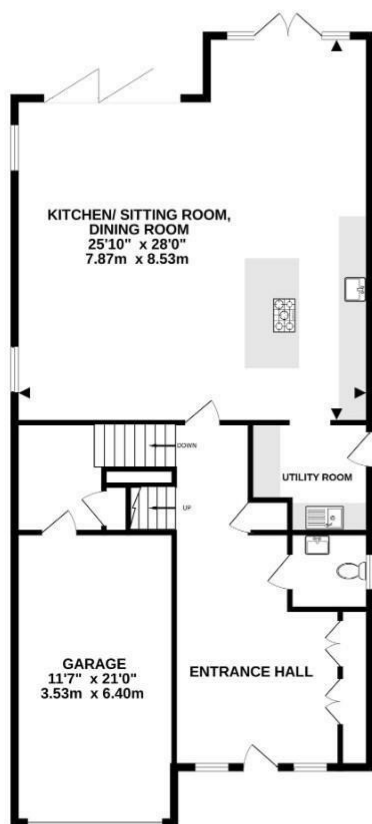
**5 Bed  
House - Detached  
located in**

Offers in excess of  
£1,750,000

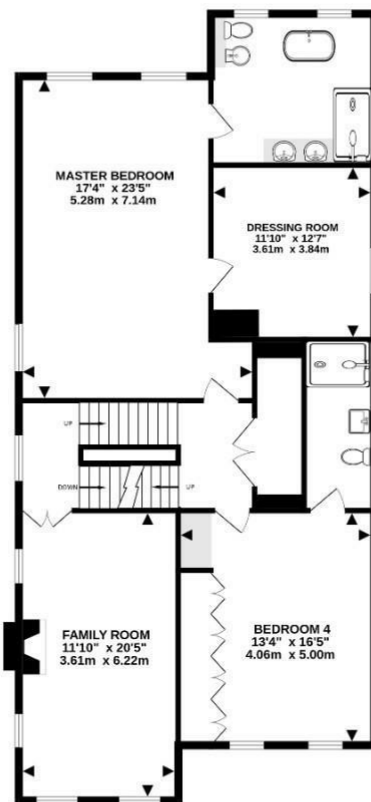


**fairoaks**

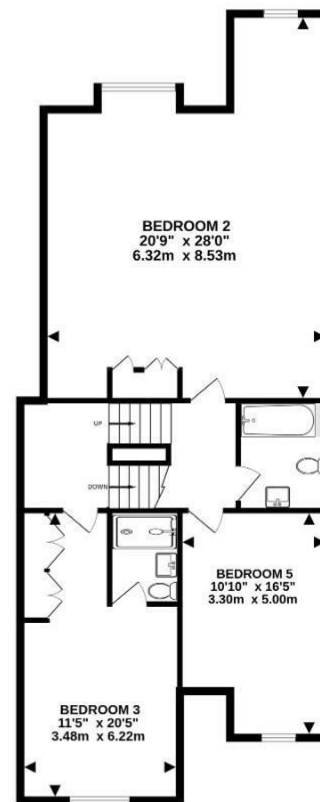




GROUND FLOOR  
1350 sq.ft. (125.5 sq.m.) approx.



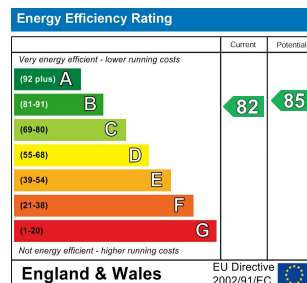
1ST FLOOR  
1330 sq.ft. (123.6 sq.m.) approx.



2ND FLOOR  
1085 sq.ft. (100.8 sq.m.) approx.

TOTAL FLOOR AREA : 3766 sq.ft. (349.8 sq.m.) approx.

Whilst every attempt has been made to ensure the accuracy of the floorplan contained here, measurements of doors, windows, rooms and any other items are approximate and no responsibility is taken for any error, omission or mis-statement. This plan is for illustrative purposes only and should be used as such by any prospective purchaser. The services, systems and appliances shown have not been tested and no guarantee as to their operability or efficiency can be given.  
Made with Metropix ©2025



## DIRECTIONS

Situated just moments from Esher High Street, this exceptional property offers unparalleled access to a vibrant selection of amenities, including stylish cafés, boutique shops, and gourmet restaurants. Esher Station is only a short walk away, providing excellent transport links to London and beyond. Perfectly combining modern living, convenience, and tranquillity, this home is an ideal choice for those seeking a well-connected yet peaceful lifestyle.

## CONTACT

Nicholson House Thames Street  
Weybridge  
Surrey  
KT13 8JG

E: [jamie@fairoaksgroup.co.uk](mailto:jamie@fairoaksgroup.co.uk)  
T: 07969 282 159



fairoaks