



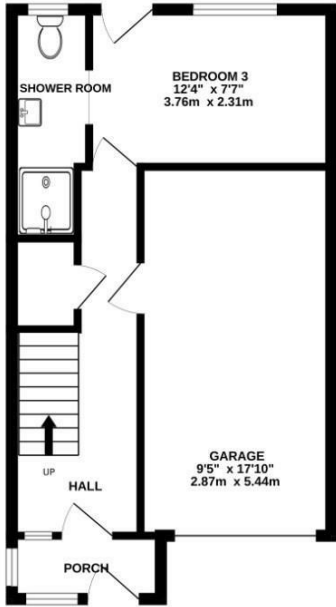
**3 Bed  
House - End  
Terrace  
located in**

Guide price £450,000

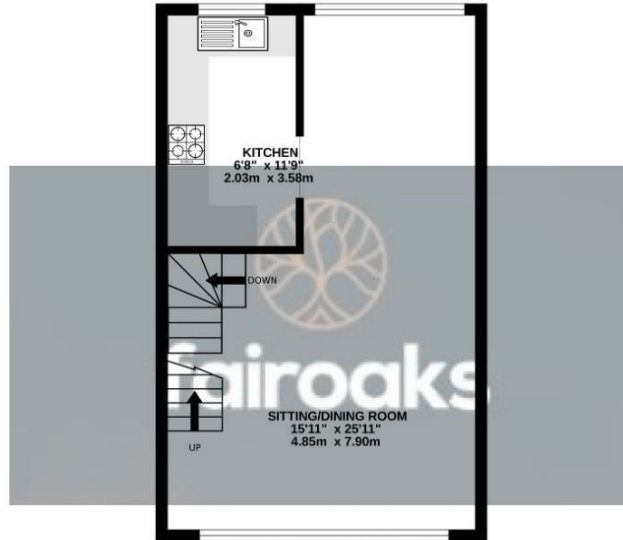


fairoaks

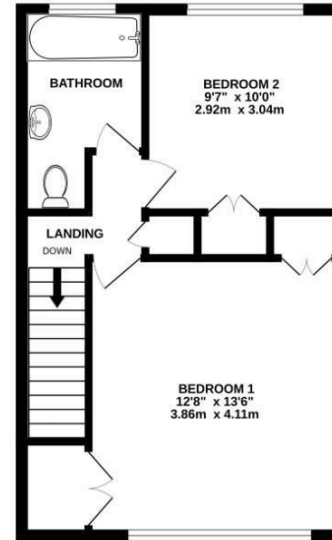
GROUND FLOOR  
424 sq.ft. (39.4 sq.m.) approx.



1ST FLOOR  
404 sq.ft. (37.5 sq.m.) approx.

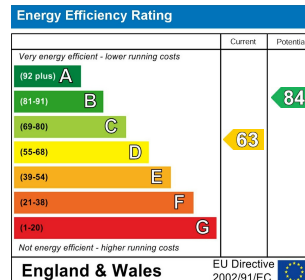


2ND FLOOR  
404 sq.ft. (37.5 sq.m.) approx.



TOTAL FLOOR AREA : 1231 sq.ft. (114.4 sq.m.) approx.

Whilst every attempt has been made to ensure the accuracy of the floorplan contained here, measurements of doors, windows, rooms and any other items are approximate and no responsibility is taken for any error, omission or mis-statement. This plan is for illustrative purposes only and should be used as such by any prospective purchaser. The services, systems and appliances shown have not been tested and no guarantee as to their operability or efficiency can be given.  
Made with Metroplan ©2024



## DIRECTIONS

Thurlton Court is situated in a highly desirable location, just a short distance from the vibrant heart of Woking. The area boasts an array of excellent shopping, leisure, and entertainment options, including the renowned New Victoria Theatre, which regularly hosts a variety of performances. For commuters and travelers, Woking station (National Rail) is conveniently nearby, offering swift and efficient connections to London and beyond. This exceptional

## CONTACT

Nicholson House Thames Street  
Weybridge  
Surrey  
KT13 8JG

E: [jamie@fairOaksgroup.co.uk](mailto:jamie@fairOaksgroup.co.uk)  
T: 07969 282 159



fair Oaks