



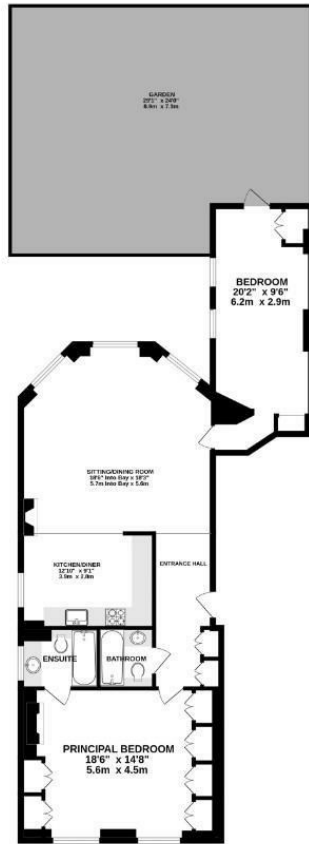
2 Bed
Flat - Conversion
located in

Asking price £4,000,000



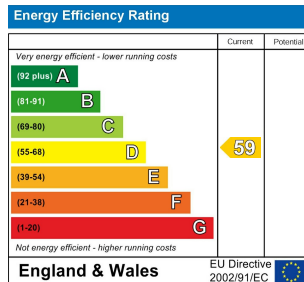
fairoaks

RAISED GROUND FLOOR
1061 sq.ft. (98.6 sq.m.) approx.



TOTAL FLOOR AREA: 1061 sq.ft. (98.6 sq.m.) approx.

Whilst every attempt has been made to ensure the accuracy of the floorplans contained here, measurements of doors, windows, rooms and any other items are approximate and no responsibility is taken for any error, omission or misstatement. This plan is for illustrative purposes only and should be used as such by any prospective purchaser. The services, systems and appliances shown have not been tested and no guarantee as to their operability or efficiency can be given.
Made with Metropix ©2024



DIRECTIONS

Beyond its medical reputation, Harley Street is also a vibrant hub of wellness, with numerous wellness centers, spas, and health-focused establishments. The street is dotted with upscale boutiques, fine dining restaurants, and chic cafes, catering to the discerning tastes of residents and visitors alike. Harley Street's central location provides convenient access to the best that London has to offer, from world-class shopping on Oxford Street to cultural attractions like the British

CONTACT

Nicholson House Thames Street
Weybridge
Surrey
KT13 8JG

E: jamie@fairoaksgroup.co.uk
T: 07969 282 159



fairoaks