



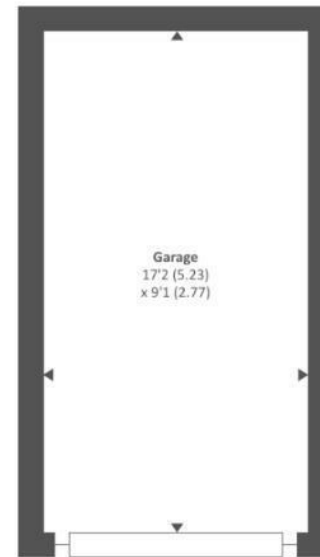
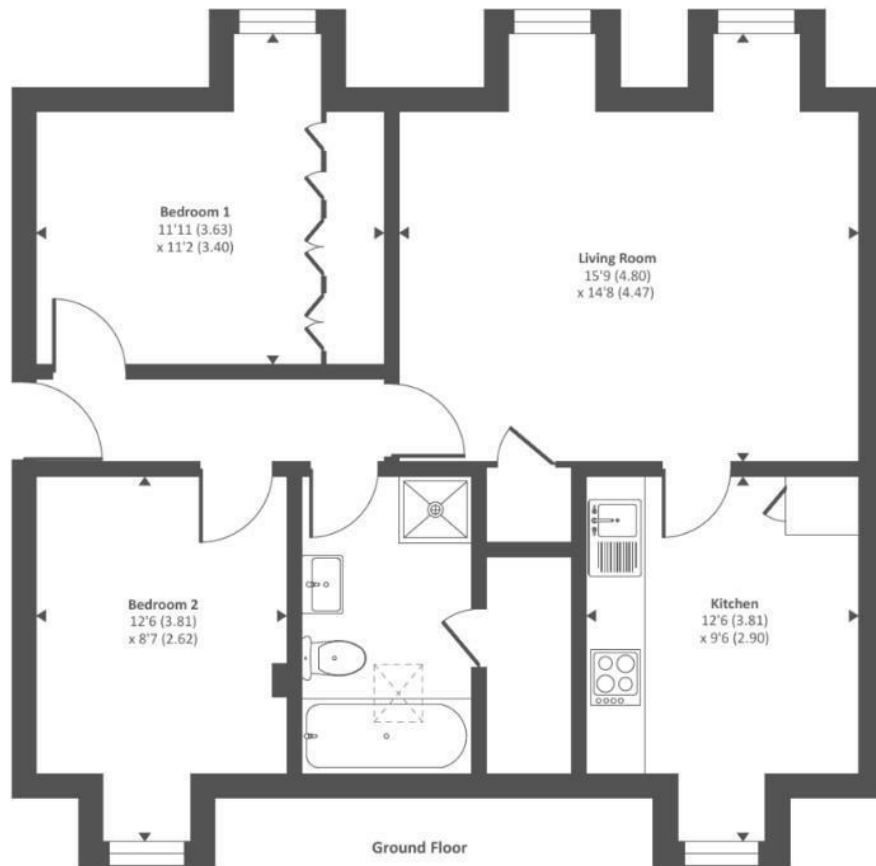
2 Bed
Flat - Purpose Built
located in

Offers in excess of
£300,000



fairoaks

Approximate Area = 676 sq ft / 62 sq m
 Garage = 155 sq ft / 14 sq m
 Total = 831 sq ft / 76 sq m
 For identification only - Not to scale



DIRECTIONS

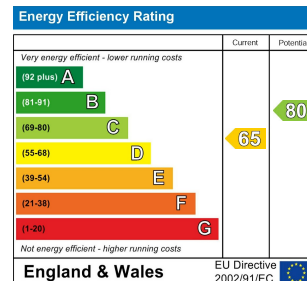
Theatre Court is located on South Street between Epsom Town Centre and Rosebery Park. Epsom Station is approximately 0.3 Miles away and offers excellent links into London. Being on this side of town it is also easy to access the M25. Epsom High Street offers a wide range of shops, restaurants, and amenities, and both Sainsburys and The Rainbow Leisure Centre are just moments away from the apartment.

CONTACT

Nicholson House Thames Street
 Weybridge
 Surrey
 KT13 8JG

E: jamie@fairoaksgroup.co.uk
 T: 07969 282 159

Ground Floor



fairoaks