

JEM PROPERTY

Top Floor Flat Mortimer Road Clifton Bristol BS8 4EY

Mortimer Road, a two-bedroom apartment in central Clifton.

0204 542 1414

info@jemproperty.co.uk

www.jemproperty.co.uk



Property Description

Situated in the heart of Clifton Village, this top-floor flat on Mortimer Road combines period charm with modern comfort. Positioned on a quiet, residential street, it offers an ideal living space in Bristol's most sought-after location.

Location Highlights

Set on a quiet residential street, the property is a short walk from the shops, cafes, and restaurants of Clifton Village. It's also close to the iconic Clifton Suspension Bridge and Durdham Downs, offering local amenities and open green spaces. The University of Bristol is less than a mile away, and Bristol Temple Meads Station is within 2 miles, making it a convenient choice for commuters, professionals, and academics.

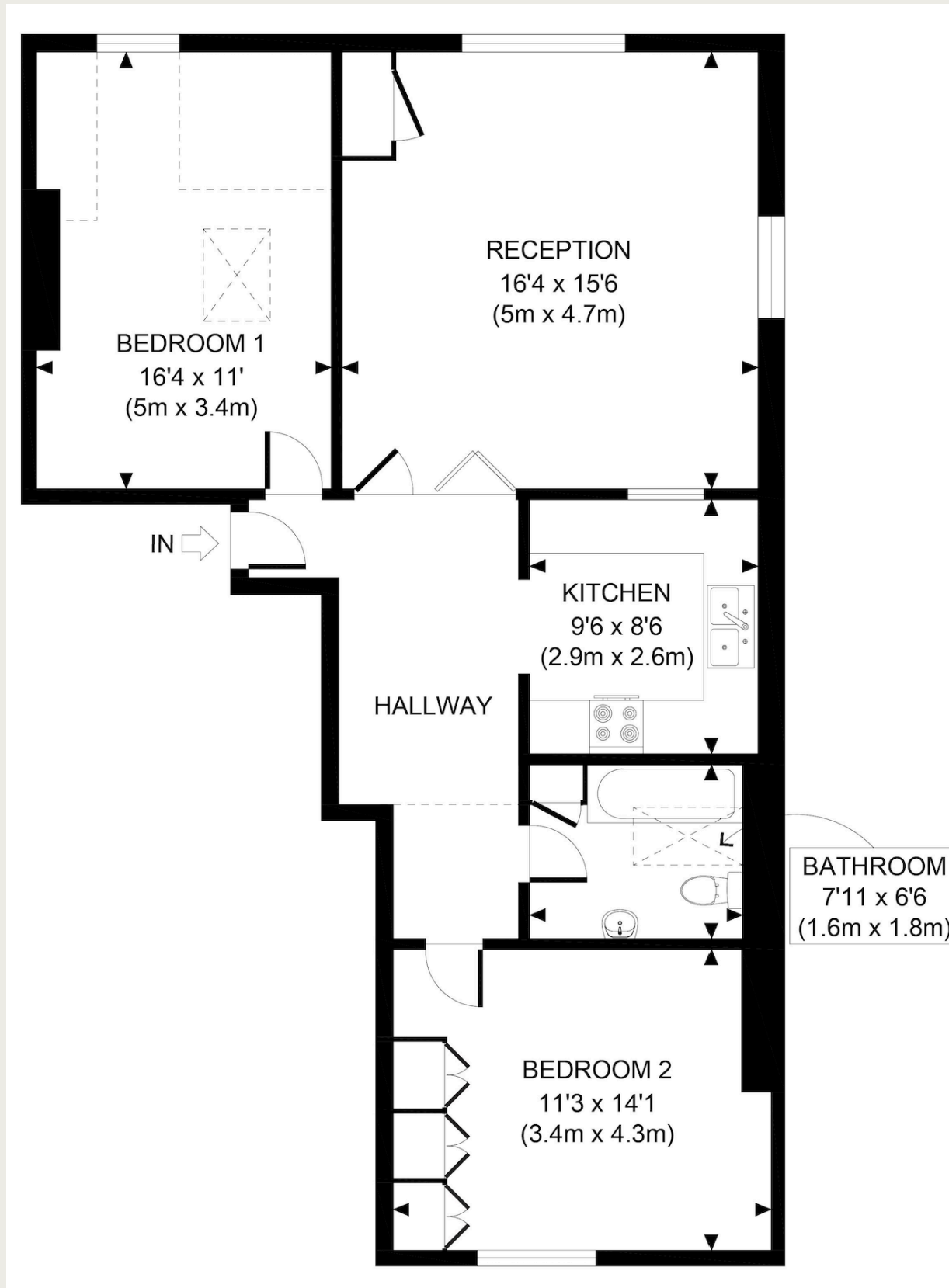
Living Space

The flat features a spacious hallway that leads to a bright living area with a traditional fireplace and neutral décor. The separate, modern kitchen is well-equipped, with integrated appliances and practical storage.

Accommodation

With two generously sized bedrooms and a separate kitchen, the flat provides comfortable living space, combining period features with modern amenities.





Key Features



Two double-bedroom apartment



Bus Stop 150 metres
Train station 2 miles



GIA 79 sqm/854 sqft



Local Amenities: 100 meters



Quiet, residential street



Clifton Village location

Key Information

- OIRO £425,000
- Title BL15943
- No onward chain

JEM PROPERTY

Partners in *growth*

EMAIL

info@jemproperty.co.uk

TELEPHONE

0204 542 1414

ADDRESS

Rodney House, Clifton Down Rd,
Clifton, Bristol, BS8 4AL

WEBSITE

www.jemproperty.co.uk

