



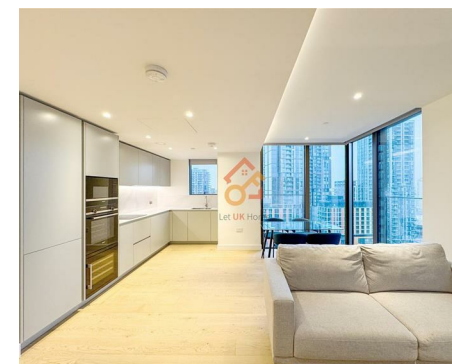
Let **UK** Home

2 Bedrooms

Flat

Located in London

£3,740 Per Month



info@letukhome.co.uk

<https://www.letukhome.co.uk/>

01795 358 886



67 Marsh Wall London

E14 9GS



Let UK Home are excited to offer this spectacular two-bedroom apartment in the heart of Harcourt Tower, part of the South Quay Plaza, in Canary Wharf.

The flat comprises a spacious open kitchen, a stylishly dining room, a magnificent living room, two bright bedrooms with built-in wardrobes and ensembles, and one toilet room. A virtual viewing is provided. Pets acceptable.

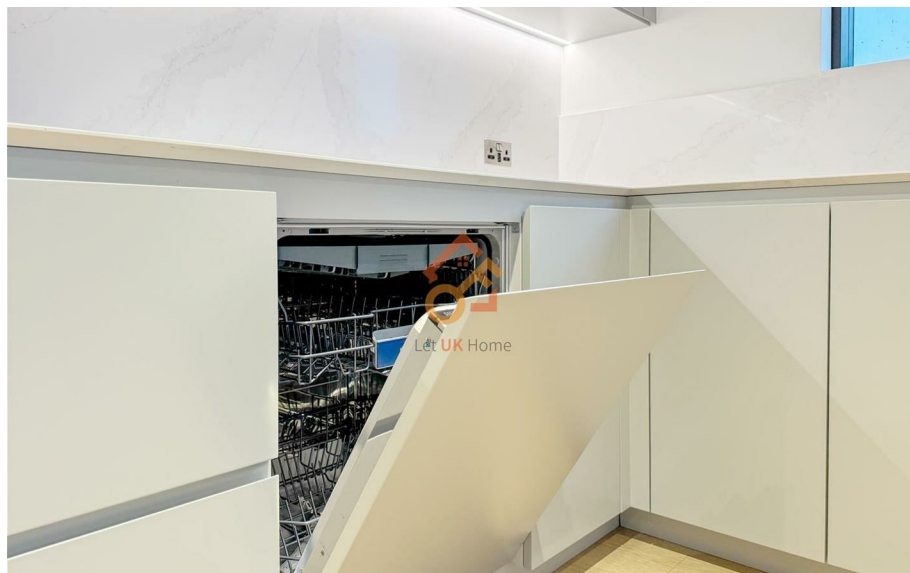
Residents will benefit from a concierge service, a leisure and wellness center and a fitness center (with an outdoor hot tub), iGarden-an advanced shared workspace, supporting conference rooms and outdoor work areas, a game room with an independent soundproof karaoke room, a 20-meter swimming pool, a 56th-floor bar and lounge, and a terrace. It is worth mentioning that the 56th-floor bar is one of the highest residential bars in Europe. Residents can overlook Canary Wharf, the Thames, the City of London, etc., and enjoy a beautiful panoramic view.

Harcourt Tower is located in the heart of Canary Wharf. Canary Wharf has a beautiful environment, with multiple parks and cool blue riverside spaces, a total of 2.6 acres of green place, and complete supporting facilities for life, such as many internationally renowned hotels and more than 280 shops, cafes, bars, and restaurants. It is a shopping paradise, with everything from well-known brand stores, commercial streets to shopping malls. There are also many well-known cultural attractions near Canary Wharf, such as Tower Bridge, Royal Observatory and National Maritime Museum. In addition, there are many art centers, museums and theaters in the area, such as Canary Wharf Arts Centre, Museum of London and Royal Institute of British Architects.

67 Marsh Wall London

£3,740 Per Month

- 11th Floor
- 24h Security
- Swimming Pool
- Cinema & Game Room
- The Spa
- Concierge Service
- The Gym
- Co-working Space
- Sauna & Steam Room
- Virtual Viewing Available | Pets Acceptable | Short-term Rentals Accepted



Two Bedroom Apartment



AVAILABLE ACROSS ALL FLOORS

Kitchen / Living / Dining	16'0" x 19'0"	5.07m x 6.01m
Bedroom 1	9'0" x 20'0"	2.91m x 6.13m
Bedroom 2	9'0" x 19'0"	2.89m x 6.04m
Total Internal Area	976 sq ft	90.71 sq m

KEY

► Measurement points C Cupboard U Utility Cupboard W Wardrobe

Layouts shown here are for approximate measurements only, they are not necessarily to scale. Exact layout and sizes of property may vary. All measurements may vary within a tolerance of 5%.



Let **UK** Home

3F 2 Eastbourne Terrace
Paddington
London
W2 6LG

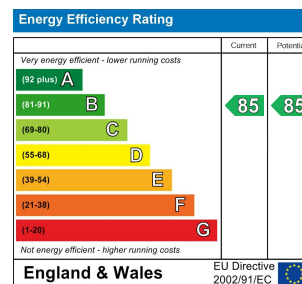
01795 358 886

info@letukhome.co.uk

Council Tax Band: F

Local Authority:

Agents Note: Whilst every care has been taken to prepare these particulars, they are for guidance purposes only. All measurements are approximate and are for general guidance purposes only and whilst every care has been taken to ensure their accuracy, they should not be relied upon and potential buyers/tenants are advised to recheck the measurements.



<https://www.letukhome.co.uk/>