



Let **UK** Home

2 Bedrooms

Flat

Located in London

£1,120,000



info@letukhome.co.uk

<https://www.letukhome.co.uk/>

01795 358 886



Hampton House, 2 Michael Road London

SW6 2RN



Let UK Home are excited to offer this spectacular 2 bedroom apartment in Hampton House, part of the King's Road Park.

This property comprises a large bright open plan kitchen, and living room leading to a private balcony with great views, two bedrooms with wardrobes (master with en-suite), a large family sized bathroom and ample storage.

The residents of this apartment will benefit from Swimming Pool, Vitality Pool, Sauna & Steam Room, simulated Golf Course and Game Room, Gym, Training Room, Physiotherapy Room, Concierge Service, Open-Air Clubhouse in the atrium, Audio-Visual Room and Private Banquet Hall.

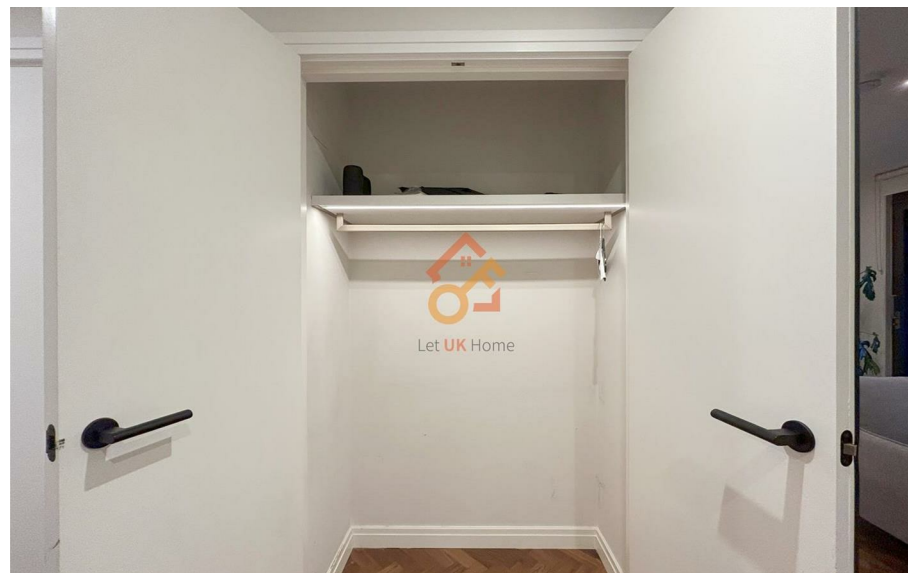
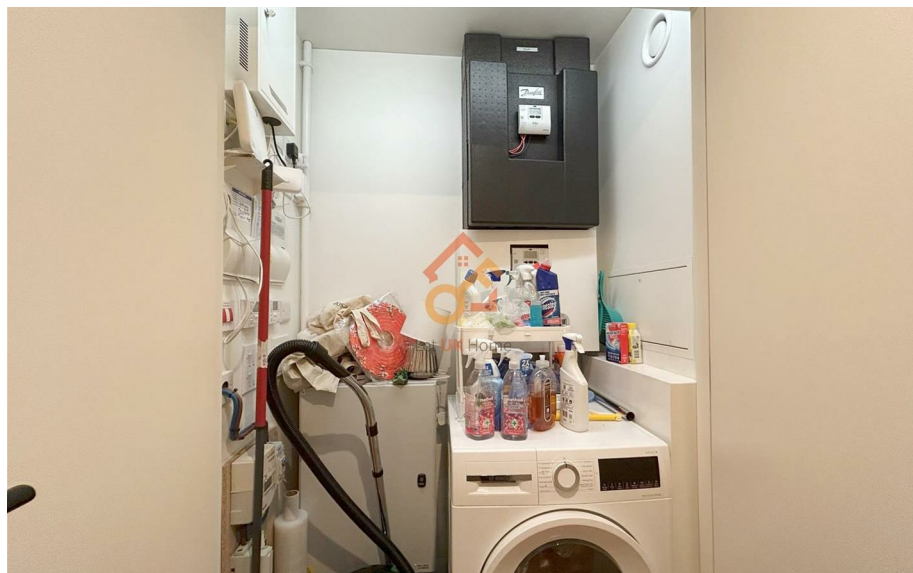
There are many famous schools around and educational resources are rich, including Imperial College, KCL, LSE, UCL, Thomas's Battersea, St Paul's School, etc. In addition, This project is located in the southwestern district of London, with convenient transportation. It is within walking distance of multiple public transportation lines including the subway and light rail, allowing easy access to various scenic spots and the financial district of London.

Hampton House, 2 Michael Road London

£1,120,000 Leasehold



- Ground floor
- Sauna & Steam Room
- Gym
- Training Room
- Concierge Service
- Swimming Pool
- Game Room
- Physiotherapy Room
- Audio-Visual Room





Let **UK** Home

3F 2 Eastbourne Terrace
Paddington
London
W2 6LG

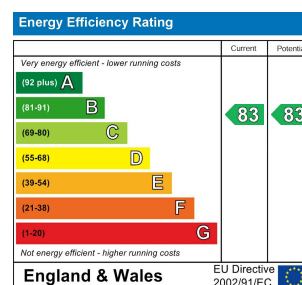
01795 358 886

info@letukhome.co.uk

Council Tax Band: G

Local Authority:

Agents Note: Whilst every care has been taken to prepare these particulars, they are for guidance purposes only. All measurements are approximate and are for general guidance purposes only and whilst every care has been taken to ensure their accuracy, they should not be relied upon and potential buyers/tenants are advised to recheck the measurements.



<https://www.letukhome.co.uk/>