



Let **UK** Home

**2 Bedrooms**

**Flat**

**Located in London**

**£500,000**



[info@letukhome.co.uk](mailto:info@letukhome.co.uk)

<https://www.letukhome.co.uk/>

01795 358 886



# Skyline Apartments, 11 Makers Yard London

E3 3YP



Let UK Home are excited to offer this spectacular 2 bedrooms apartment in the heart of Skyline Apartments part of the Three Waters.

The flat features a well-appointed reception room, perfect for entertaining guests or enjoying a quiet evening in. With two generously sized bedrooms, there is ample room for relaxation and privacy. The two bathrooms add convenience, ensuring that morning routines and evening unwinding can be done with ease.

Skyline Apartments is situated in a lively neighbourhood, offering a blend of urban living and community charm. Residents will appreciate the proximity to local amenities, including shops, cafes, and parks, all within easy reach. The excellent transport links nearby make commuting to central London a breeze, allowing you to enjoy the best of city life while returning to your peaceful retreat.

Residents of this exceptional development will benefit from concierge service, cinema room, leisure facilities and beautiful landscaped courtyards.

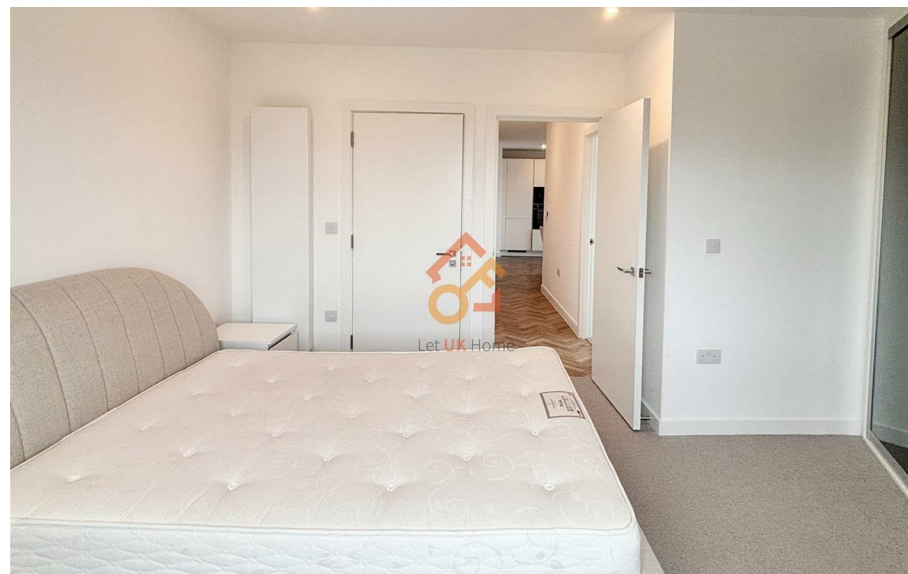
This property is perfect for young professionals, couples, or small families looking for a stylish and functional home in a sought-after location. With its modern design and practical layout, Skyline Apartments presents a wonderful opportunity to embrace London living at its finest. Do not miss the chance to make this exceptional flat your new home.

# Skyline Apartments, 11 Makers Yard London

£500,000 Leasehold



- 18th Floor
- Cinema Room
- Public Courtyard
- Concierge Service
- Leisure Facilities
- Children's Playground







室内总面积	70.3 平方米	757 平方英尺
客厅/餐厅	4040毫米 x 2430毫米	13'3" x 7'12"
厨房	5100毫米 x 2200毫米	16'9" x 7'3"
卧室1	3640毫米 x 3640毫米	11'11" x 11'11"
卧室2	4050毫米 x 3070毫米	13'3" x 10'1"
室外总面积	7.3 平方米	79 平方英尺
阳台	2940毫米 x 2420毫米	9'8" x 7'11"

平面图和测量图仅供参考，不作为法律依据。所有测量值误差范围在5%以内，以设计修正为准。  
\* 有关集成家电的更多信息，请参阅规格说明或与置业顾问联系。



Let **UK** Home

3F 2 Eastbourne Terrace  
Paddington  
London  
W2 6LG

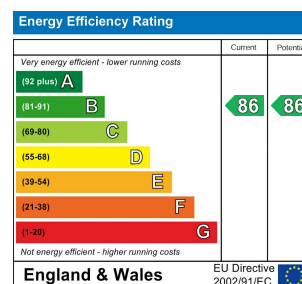
01795 358 886

info@letukhome.co.uk

**Council Tax Band: E**

**Local Authority:**

Agents Note: Whilst every care has been taken to prepare these particulars, they are for guidance purposes only. All measurements are approximate and are for general guidance purposes only and whilst every care has been taken to ensure their accuracy, they should not be relied upon and potential buyers/tenants are advised to recheck the measurements.



<https://www.letukhome.co.uk/>