

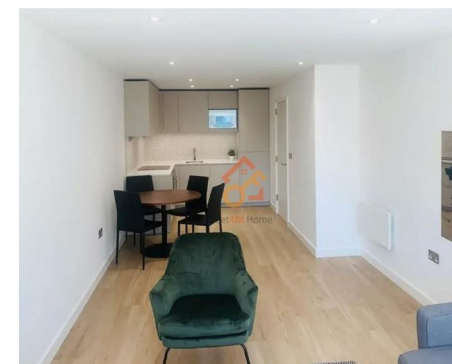
Let **UK** Home

1 Bedrooms

Flat

Located in London

£350,000



info@letukhome.co.uk

<https://www.letukhome.co.uk/>

01795 358 886



3 Caversham Road London

NW9 4DU



Let UK Home are excited to offer this spectacular one bedroom apartment in the heart of Cornelia House part of the Beaufort Park.

This property comprises a large bright open plan kitchen and living room leading to a large private balcony with great views, one double bedrooms with wardrobe, a large modern bathroom and ample storage.

Residents will benefit from the concierge service and onsite fitness facilities including swimming pool, vitality pool, steam room and sauna, treatment room, gym and fitness studios. The gym also offers free classes including interval training, core training, and self-defense. Furthermore, Beaufort Park boasts spacious green areas and exquisite landscaping, with a 2-acre park and green space providing residents with beautiful views.

The apartment is close to Hendon, Mill Hill, Golders Green and Hampstead Heath, and is also close to several shopping places including Brent Cross Shopping Center.

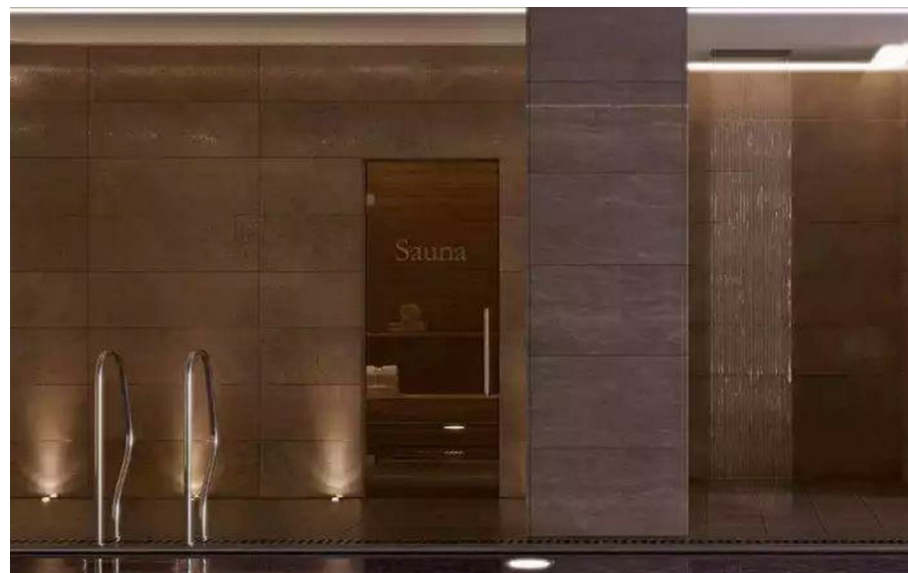
There are several bus stops and tube stations within walking distance of this apartment. The nearest subway station is Colindale Station on the Northern Line, which is within walking distance. From Colindale Station, you can quickly reach the transport hub, King's Cross St. Pancras station, from which you can take the Eurostar to other European countries. Furthermore, Beaufort Park is conveniently located near the A1, M1, and M25 motorways, making it easy to travel by car as well.

3 Caversham Road London

£350,000 Leasehold

- Ground Floor
- 24h Security
- Swimming Pool
- Close to Transport Links

- Concierge Service
- The Gym
- Sauna & Steam Room
- Close to Local Shops





Let **UK** Home

3F 2 Eastbourne Terrace
Paddington
London
W2 6LG

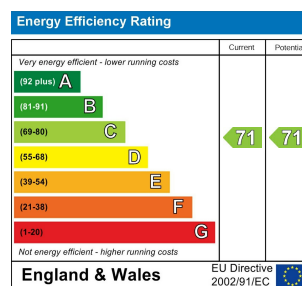
01795 358 886

info@letukhome.co.uk

Council Tax Band: C

Local Authority:

Agents Note: Whilst every care has been taken to prepare these particulars, they are for guidance purposes only. All measurements are approximate and are for general guidance purposes only and whilst every care has been taken to ensure their accuracy, they should not be relied upon and potential buyers/tenants are advised to recheck the measurements.



<https://www.letukhome.co.uk/>