



萊英家  
Let UK Home

3 Bedrooms

Flat

Located in London

£7,107 Per Month



[info@letukhome.co.uk](mailto:info@letukhome.co.uk)

<https://www.letukhome.co.uk/>

01795 358 886



# 4B Merchant Square London

W2 1AN



This three bedroom, two bathroom, interior designed apartment is set within the heart of the Paddington Basin and close to the popular West End Quay and walking distance to Hyde Park

The 1018 sq.ft apartment is situated on the thirteenth floor of this prestigious building which features concierge, lift service and secure underground parking.

The stunning apartment comprises spacious living and entertaining space with a beautiful reception room with superb London skyline views, modern fully fitted, open plan kitchen, three bedrooms, two bathrooms and large storage space.

The apartment offers easy access to superb transport links such as Paddington Train Station (Elizabeth Line, Bakerloo, Hammersmith & City, Circle, District lines and Heathrow Express) Edgware Road (Circle, District and Bakerloo lines).

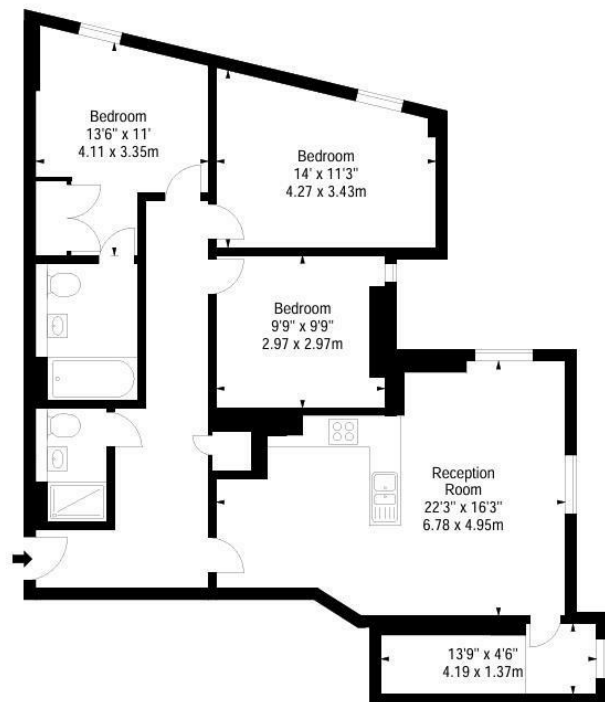
# 4B Merchant Square London

£7,107 Per Month



- 13th Floor
- Private underground parking space
- CCTV
- concierge service
- Available furnished or unfurnished
- Video entry





萊英家  
Let **UK** Home

3F 2 Eastbourne Terrace  
Paddington  
London  
W2 6LG

01795 358 886

info@letukhome.co.uk

**Council Tax Band: G**

**Local Authority:**

Agents Note: Whilst every care has been taken to prepare these particulars, they are for guidance purposes only. All measurements are approximate and are for general guidance purposes only and whilst every care has been taken to ensure their accuracy, they should not be relied upon and potential buyers/tenants are advised to recheck the measurements.

Energy Efficiency Rating		Current	Potential
Very energy efficient - lower running costs			
(92 plus)	A		
(81-91)	B		
(69-80)	C		
(55-68)	D		
(39-54)	E		
(21-38)	F		
(1-20)	G		
Not energy efficient - higher running costs			
England & Wales		EU Directive 2002/91/EC	

<https://www.letukhome.co.uk/>