



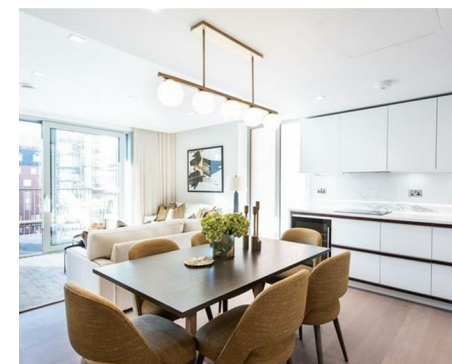
萊英家  
Let **UK** Home

3 Bedrooms

Flat

Located in London

£9,052 Per Month



[info@letukhome.co.uk](mailto:info@letukhome.co.uk)

<https://www.letukhome.co.uk/>

02045348146



# West End Gate London

W2 1BB



Let UK Home are excited to offer this stunning three-bedroom apartment in Garrett Mansions, the latest phase in the brand new West End Gate development.

A luxurious interior designed three-bedroom 3rd floor apartment set over 1013 SqFt comprising a large open-plan reception room leading onto a private balcony. The fully integrated kitchen with appliances from Siemens and Miele including oven and induction hobs, large fridge freezer and dishwasher and wine chiller all inset into a composite stone work tops. The apartment has three double bedrooms with the master including an En-suite and a family bathroom. The whole apartment also benefits from comfort cooling.

This apartment comes complete with large Samsung Smart TVs and Samsung sound bar and is offered with full use of the onsite facilities including Gym, pool, residence lounge area, privet dining room, conference facilities, 24 hour concierge and Cinema room. The apartment is ready to move into with internet already connected.

West End Gate is positioned between the tranquil waterways of Little Venice and the stylish mansions of Marylebone and with each reach of the numerous restaurants and shops of the West End.

# West End Gate London

£9,052 Per Month



- 3rd Floor
- Lift service
- Central location
- Flexible rental terms
- Available furnished or unfurnished

- Interior Designed | Private Balcony
- Great transport links
- CCTV
- Parking





萊英家  
Let **UK** Home

6/F Two Kingdom Street

London

W2 6BD

02045348146

info@letukhome.co.uk

**Council Tax Band:**

**Local Authority:**

Agents Note: Whilst every care has been taken to prepare these particulars, they are for guidance purposes only. All measurements are approximate and are for general guidance purposes only and whilst every care has been taken to ensure their accuracy, they should not be relied upon and potential buyers/tenants are advised to recheck the measurements.

Energy Efficiency Rating		
	Current	Potential
Very energy efficient - lower running costs		
(92 plus) <b>A</b>		
(81-91) <b>B</b>		
(69-80) <b>C</b>		
(55-68) <b>D</b>		
(39-54) <b>E</b>		
(21-38) <b>F</b>		
(1-20) <b>G</b>		
Not energy efficient - higher running costs		
England & Wales		
EU Directive 2002/91/EC		

<https://www.letukhome.co.uk/>