



萊英家
Let UK Home

2 Bedrooms

Flat

Located in London

£2,500 Per Month



info@letukhome.co.uk

<https://www.letukhome.co.uk/>

01795 358 886



18 Mostyn Grove London

E3 2LL



Let UK Home are excited to offer this stunning two-bedroom apartment in Windsor Court within the So Bow development.

This property comprises a large bright open plan kitchen and living room leading to a large private balcony with great views, two double bedrooms with wardrobe (master en-suite), a large family sized bathroom and ample storage.

The property is just a short walk from Bow Road Tube & Bow Church DLR. Minutes walk to 24hr Bus / Supermarket / Roman Road Market & amenities. Victoria Park, Mile End Park and Olympic Park are also just a short walk away. Just a short walk from Hackney Wick. Brick Lane & Shoreditch both are both within a short bus journey .

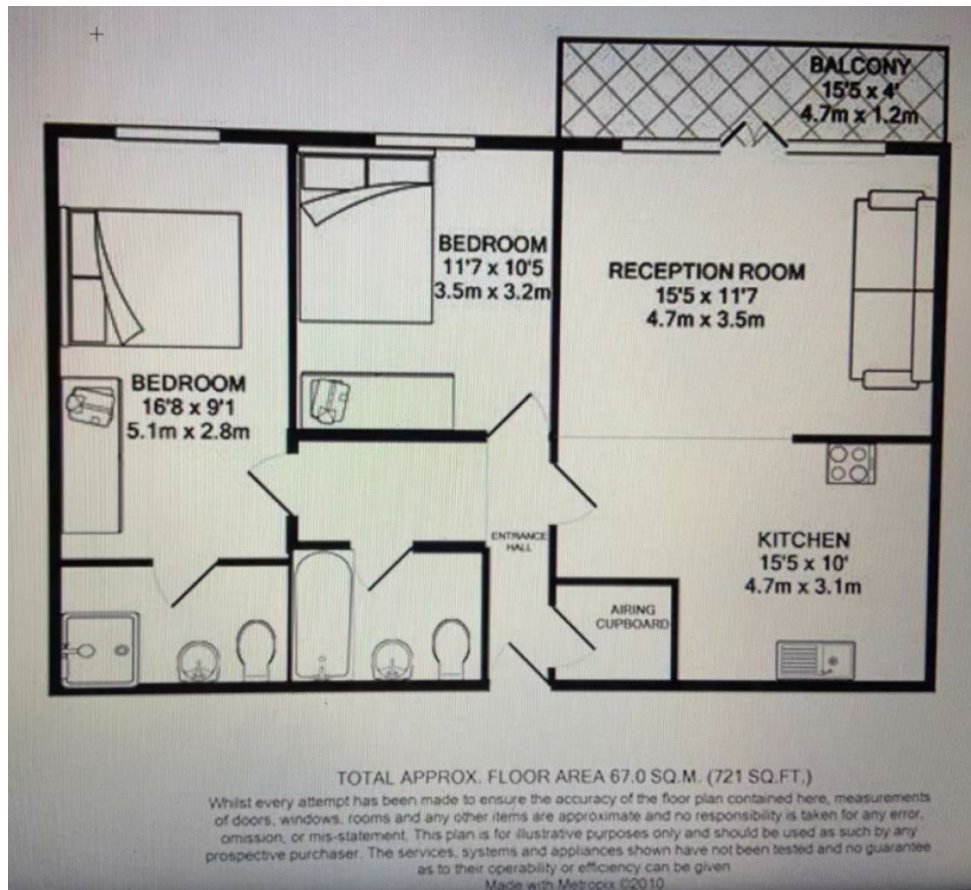
18 Mostyn Grove London

£2,500 Per Month

- 2nd Floor
- Private Balcony

- Close to Transport Links





萊英家
Let **UK** Home

3F 2 Eastbourne Terrace
Paddington
London
W2 6LG

01795 358 886

info@letukhome.co.uk

Council Tax Band: D

Local Authority:

Agents Note: Whilst every care has been taken to prepare these particulars, they are for guidance purposes only. All measurements are approximate and are for general guidance purposes only and whilst every care has been taken to ensure their accuracy, they should not be relied upon and potential buyers/tenants are advised to recheck the measurements.

Energy Efficiency Rating		
	Current	Potential
Very energy efficient - lower running costs		
(92 plus) A		
(81-91) B		
(69-80) C	81	81
(55-68) D		
(39-54) E		
(21-38) F		
(1-20) G		
Not energy efficient - higher running costs		
England & Wales	EU Directive 2002/91/EC	

<https://www.letukhome.co.uk/>