

萊英家  
Let UK Home

2 Bedrooms

Flat

Located in London

£4,000 Per Month



[info@letukhome.co.uk](mailto:info@letukhome.co.uk)

<https://www.letukhome.co.uk/>

02045348146



# Tierney Lane London

## W6 9YG



Let UK Home are excited to offer this modern two-bedroom apartment in Faulkner House, part of Fulham Reach, located in the borough of Hammersmith and Fulham within the W6 postal district.

This property comprises a large bright open plan kitchen and living room leading to a large private balcony, two double bedrooms (master with wardrobe & en-suite), a large family sized bathroom and ample storage.

Residents of this exceptional development have exclusive use of the spa, cinema, game room, virtual golf suite, swimming pool and gymnasium. Furthermore, residents will also benefit from a 24 hour concierge and an unrivalled selection of shops, bars, restaurants, leisure facilities and beautiful courtyards.

Fulham Reach has a unique location, with a first-line view of the River Thames, and on the opposite bank is the national Grade II listed building - Harrods Furniture Depository. Looking west, there are stunning views of the iconic Hammersmith Bridge. In addition, there is a 150-meter-long riverside walk around the apartment, bringing tranquility and comfort to busy urban life. The development is surrounded by complete commercial facilities, including shops, bars and restaurants. The Tesco provides residents with daily needs, the Harris+Hoole coffee brings fragrant coffee and a relaxed atmosphere, and the Blue Boat pub is an ideal place for friends to gather. In addition, high-end dining venues such as French restaurant Brasserie Blanc also provide residents with a variety of food choices. It not only has a bustling business atmosphere, but also has car clubs and other leisure and entertainment facilities to meet the various needs of residents.

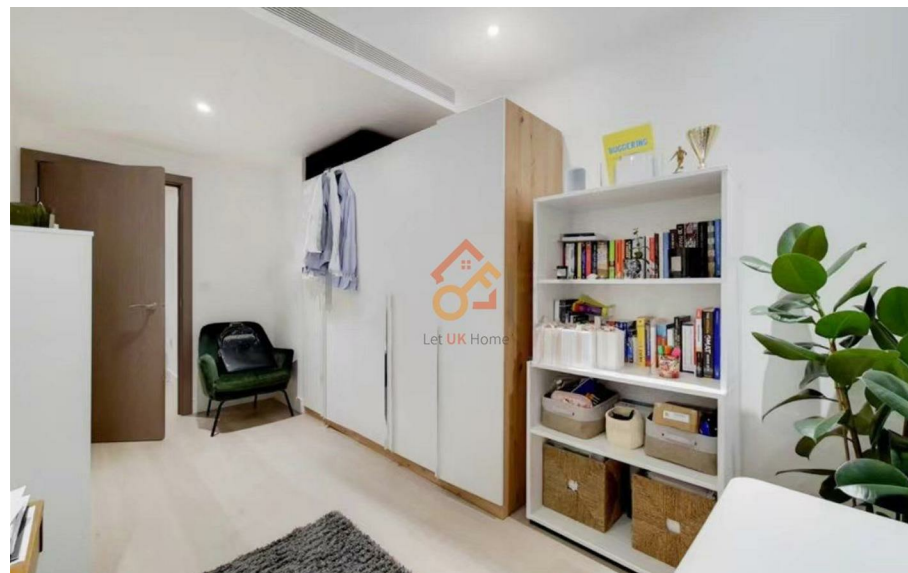
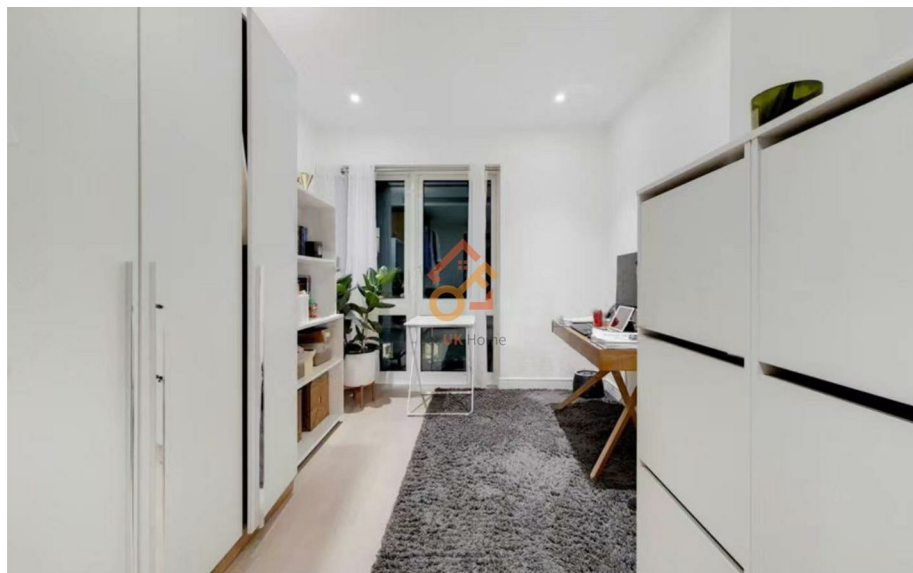
# Tierney Lane London

## £4,000 Per Month



- 3rd Floor
- 24h Security
- Swimming Pool
- The Gym
- The Spa

- Concierge Service
- Reception Room
- Virtual Golf Suite
- Cinema & Game Room
- Treatment Room





萊英家  
Let **UK** Home

6/F Two Kingdom Street  
London  
W2 6BD

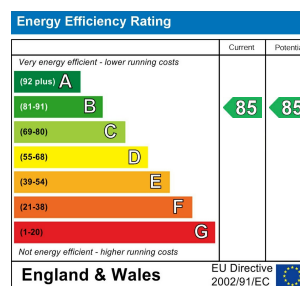
02045348146

info@letukhome.co.uk

**Council Tax Band: F**

**Local Authority:**

Agents Note: Whilst every care has been taken to prepare these particulars, they are for guidance purposes only. All measurements are approximate and are for general guidance purposes only and whilst every care has been taken to ensure their accuracy, they should not be relied upon and potential buyers/tenants are advised to recheck the measurements.



<https://www.letukhome.co.uk/>