



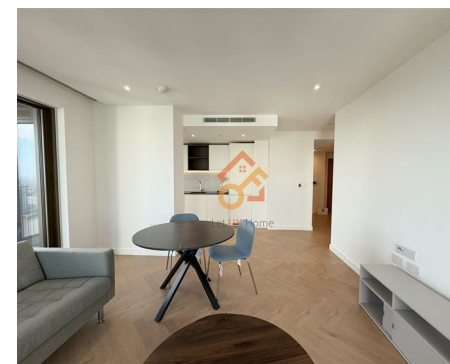
萊英家
Let **UK** Home

1 Bedrooms

Flat

Located in London

£3,250 Per Month



info@letukhome.co.uk

<https://www.letukhome.co.uk/>

02045348146



Flat 3605, One Thames Quay 222 Marsh Wall

London | | E14 9LZ



Let UK Home present this brand new one bedroom property in One Thames Quay located near Canary Wharf.

The flat comprises a spacious open kitchen with a stylishly attached dining area, a magnificent living room leading to a large private balcony with great views, one bright bedroom with built-in wardrobes and one modern bathroom.

This apartment offers a wealth of first-class amenities designed and a vast range of spaces for entertainment and relaxation to elevate residents' living experience, including a private lobby with concierge service, duck pin bowling, private media room and a 46th floor residents' lounge, sky gym and two large roof terraces.

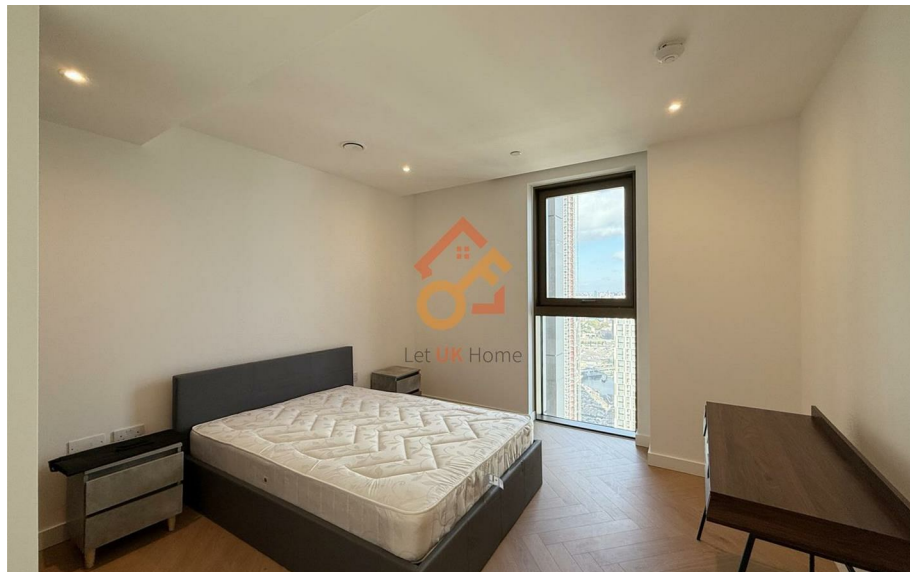
There are five large shopping malls surrounding the apartment, with more than 300 restaurants, cafes, bars, service agencies and entertainment facilities from all over the world. Residences, shops, bars and restaurants are seamlessly integrated with commercial spaces and attractive outdoor areas.

Flat 3605, One Thames Quay 222 Marsh Wall

£3,250 Per Month



- 36th Floor
- 24h Security
- The Gym
- Virtual Golf Suite
- Bowling Alley
- Concierge Service
- Swimming Pool
- Cinema & Game Room
- Co-working Space
- Residents Lounge





6/F Two Kingdom Street
London
W2 6BD

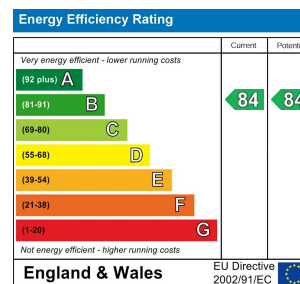
02045348146

info@letukhome.co.uk

Council Tax Band: F

Local Authority:

Agents Note: Whilst every care has been taken to prepare these particulars, they are for guidance purposes only. All measurements are approximate and are for general guidance purposes only and whilst every care has been taken to ensure their accuracy, they should not be relied upon and potential buyers/tenants are advised to recheck the measurements.



<https://www.letukhome.co.uk/>