

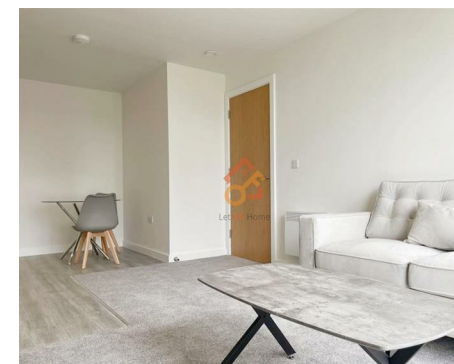
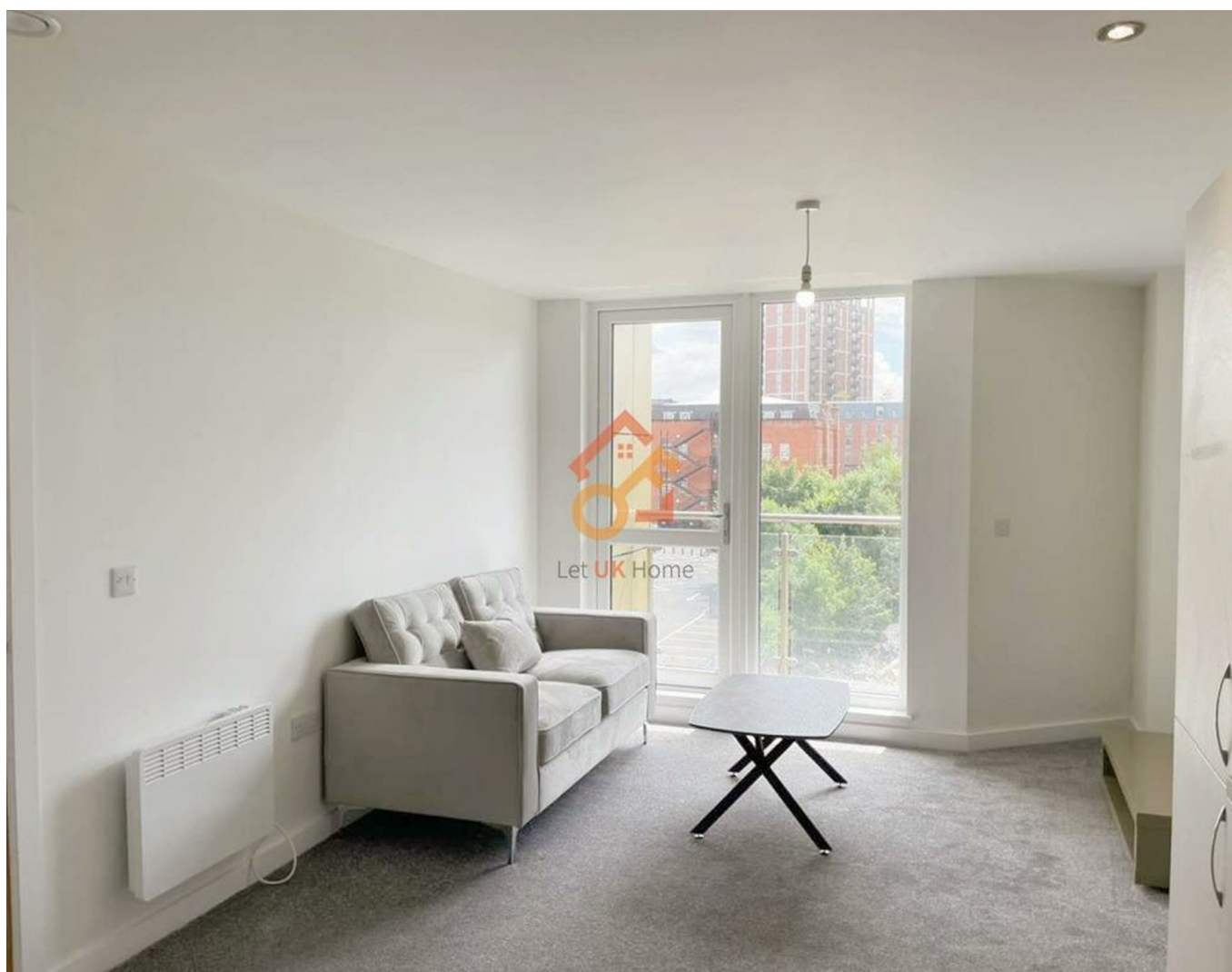


1 Bedrooms

Flat

Located in Salford

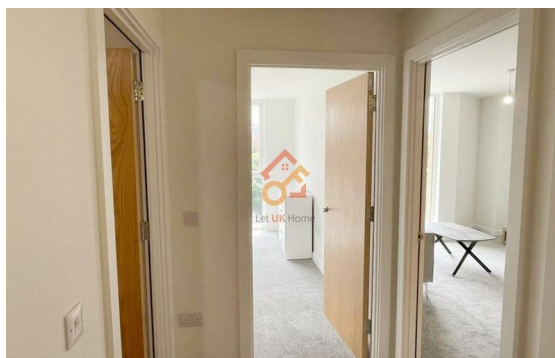
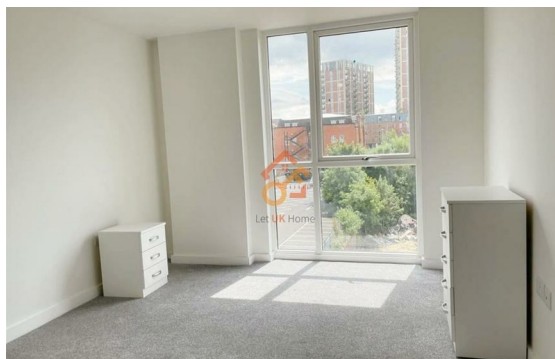
£1,000 Per Month



[pmadmin@letukhome.co.uk](mailto:pmadmin@letukhome.co.uk)

<https://www.letukhome.co.uk/>

01615219812



Let UK Home are delighted to present this spectacular one-bedroom apartment in Adelphi Wharf development in Manchester.

The flat comprises a spacious open kitchen with a stylishly attached dining area, a magnificent living room leading to a private balcony, one bright bedroom and one modern bathroom.

The apartment has an excellent location and enjoys excellent Metrolink. Furthermore, Adelphi Wharf is within walking distance of both Salford Crescent and Salford Central train stations. The apartments are easily accessible from the M60 motorway to Liverpool and Leeds via the M602 motorway link to Manchester City.

The apartment is within walking distance of Manchester city center and has easy access to business districts such as Manchester Amdale Shopping Centre. There are

## Energy Efficiency Rating: B

Agents Note: Whilst every care has been taken to prepare these particulars, they are for guidance purposes only. All measurements are approximate and are for general guidance purposes only and whilst every care has been taken to ensure their accuracy, they should not be relied upon and potential buyers/tenants are advised to recheck the measurements.



1/F, St James Tower 7 Charlotte  
Street  
Manchester  
M1 4DZ

01615219812

[pmadmin@letukhome.co.uk](mailto:pmadmin@letukhome.co.uk)

<https://www.letukhome.co.uk/>