



萊英家
Let UK Home

2 Bedrooms

Flat

Located in Reading

£1,450 Per Month



info@letukhome.co.uk

<https://www.letukhome.co.uk/>

02045348146



Flat 106 Peregrine House Bedwyn Mews

Reading | | RG2 0NZ



Let UK Home present this brand new two-bedroom property in Peregrine House in Kennet Island.

This property comprises a large bright open plan kitchen and living room, two double bedrooms, a large family sized bathroom and ample storage.

Residents of this exceptional development have exclusive use of the spa, swimming pool and gymnasium. Furthermore, residents will also benefit from a 24 hour concierge and an unrivalled selection of shops, bars, restaurants, leisure facilities.

The development is conveniently located near the Reading Green Park Station train station. You can also catch the Elizabeth Line at Reading Station.

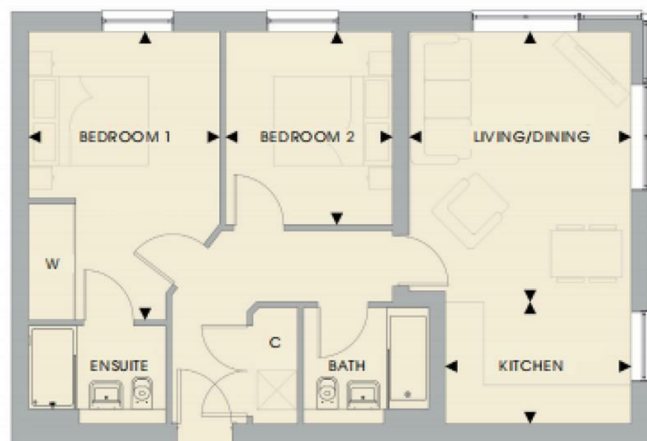
There are many famous schools around, and educational resources are rich. Including University of London, King's College London, University of London, University of the Arts London, etc.

Flat 106 Peregrine House Bedwyn Mews

£1,450 Per Month

- 1st Floor
- 24h Security
- Swimming Pool
- Concierge Service
- The Spa
- The Gym





Key

- C Cupboard
- W Fitted wardrobe
- ◄► Measurement points
- ☒ Position for washing machine

Dimensions

Total Area	66.5 sq m	716.4 sq ft	
Living/Dining	Kitchen	Bedroom 1	Bedroom 2
4.54m x 3.72m	2.05m x 3.11m	4.84m x 3.20m	3.25m x 2.80m
14'9" x 12'4"	6'7" x 10'2"	15'9" x 10'5"	10'7" x 9'2"



萊英家
Let UK Home

6/F Two Kingdom Street
London
W2 6BD

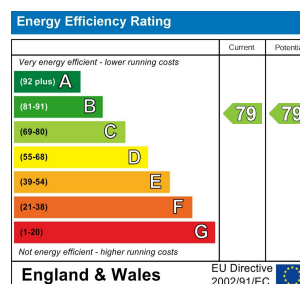
02045348146

info@letukhome.co.uk

Council Tax Band: C

Local Authority:

Agents Note: Whilst every care has been taken to prepare these particulars, they are for guidance purposes only. All measurements are approximate and are for general guidance purposes only and whilst every care has been taken to ensure their accuracy, they should not be relied upon and potential buyers/tenants are advised to recheck the measurements.



<https://www.letukhome.co.uk/>