



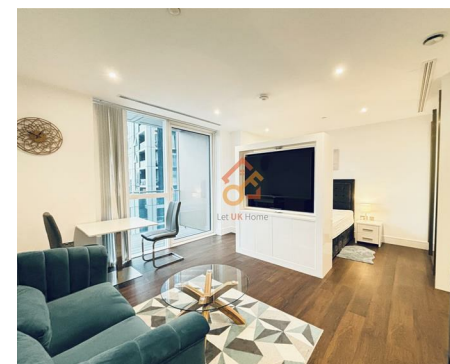
萊英家  
Let UK Home

1 Bedrooms

Flat - Studio

Located in London

£2,400 Per Month



[info@letukhome.co.uk](mailto:info@letukhome.co.uk)

<https://www.letukhome.co.uk/>

02045348146



# Flat 1301 Maine Tower 9 Harbour Way

London | | E14 9DX



Let UK Home are excited to offer this spectacular studio apartment in the heart of Maine Tower part of the Harbour Central.

The studio comprises a spacious open kitchen with a stylishly attached dining area, a magnificent living room leading to a large private balcony with great views, one bright bedroom with built-in wardrobes, one modern bathroom and ample storage.

The apartment is equipped with communal courtyards and fountains. Residents can enjoy fitness and entertainment facilities including spa, gym, pilates room, private cinema and 24h concierge service.

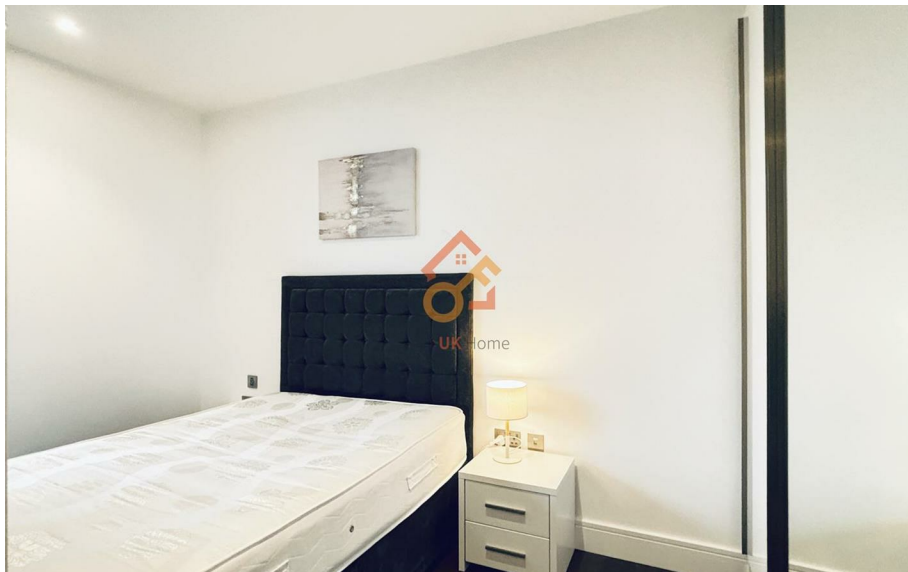
The apartment is within walking distance of the DLR station, making it easy to reach important stations such as Canary Wharf Underground Station and the City of London. From Canary Wharf Station, you can take the Jubilee subway line to quickly reach various areas in London.

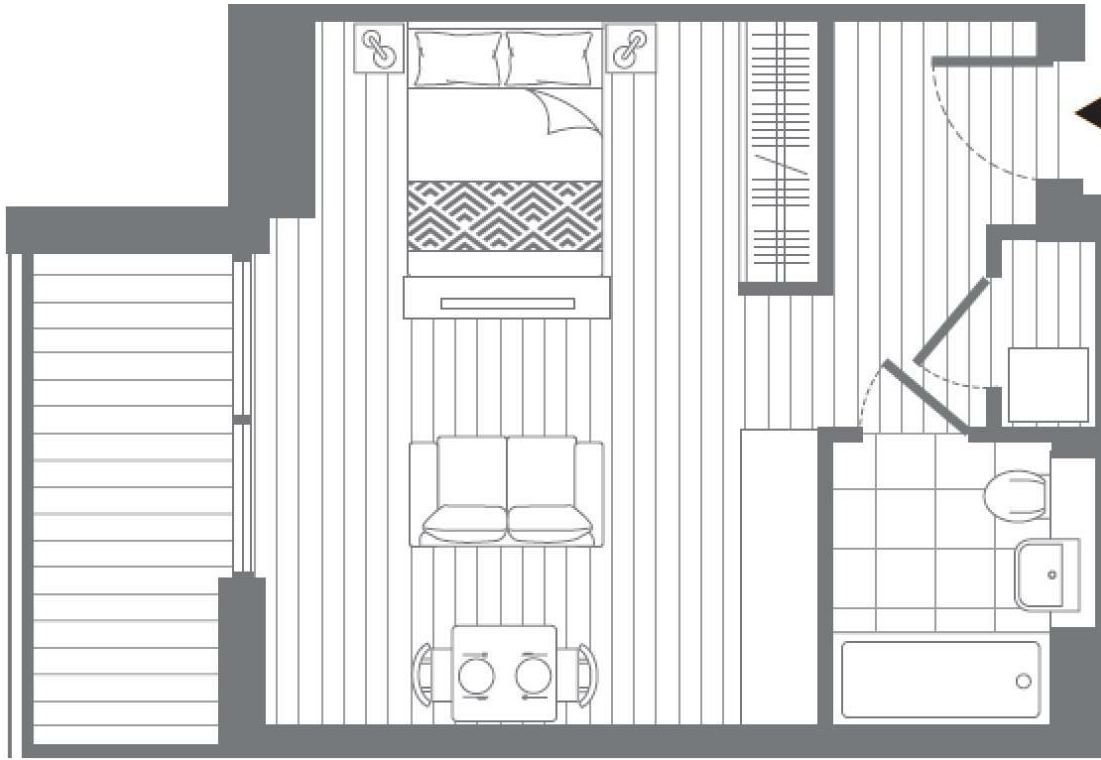
# Flat 1301 Maine Tower 9 Harbour Way

£2,400 Per Month



- 13th Floor
- 24h Security
- Sauna & Steam Room
- Cinema & Game Room
- Treatment Room
- Concierge Service
- The Spa
- The Gym
- Residents Lounge





**Total floor area**

**34 square metres**



萊英家  
Let **UK** Home

6/F Two Kingdom Street

London

W2 6BD

02045348146

info@letukhome.co.uk

**Council Tax Band: E**

**Local Authority:**

Agents Note: Whilst every care has been taken to prepare these particulars, they are for guidance purposes only. All measurements are approximate and are for general guidance purposes only and whilst every care has been taken to ensure their accuracy, they should not be relied upon and potential buyers/tenants are advised to recheck the measurements.

Energy Efficiency Rating		
	Current	Potential
Very energy efficient - lower running costs		
(92 plus) <b>A</b>		
(81-91) <b>B</b>	84	84
(69-80) <b>C</b>		
(55-68) <b>D</b>		
(39-54) <b>E</b>		
(21-38) <b>F</b>		
(1-20) <b>G</b>		
Not energy efficient - higher running costs		
<b>England &amp; Wales</b>	EU Directive 2002/91/EC	

<https://www.letukhome.co.uk/>