

2 Bedrooms

Flat

Located in Salford

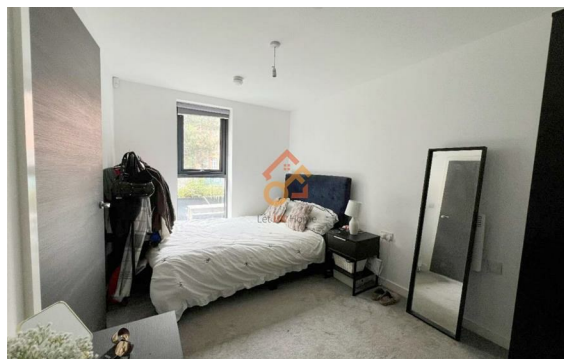
£1,350 Per Month



pmadmin@letukhome.co.uk

<https://www.letukhome.co.uk/>

01615219812



Let UK Home are delighted to offer this modern two-bedroom apartment, part of the sought-after Downtown development, located in the heart of the Castlefield Basin regeneration area.

This property comprises a large bright open plan kitchen and living room leading to a large private balcony with great views, two double bedrooms with wardrobes (master en-suite), a large family sized bathroom and ample storage.

Downtown boasts a host of hotel-style services and facilities, such as 24hr concierge service, a state of the art gymnasium, sauna and steam rooms, residents rooftop terrace, co-working spaces and media room.

Energy Efficiency Rating: C

Agents Note: Whilst every care has been taken to prepare these particulars, they are for guidance purposes only. All measurements are approximate and are for general guidance purposes only and whilst every care has been taken to ensure their accuracy, they should not be relied upon and potential buyers/tenants are advised to recheck the measurements.



1/F, St James Tower 7 Charlotte
Street
Manchester
M1 4DZ

01615219812

pmadmin@letukhome.co.uk

<https://www.letukhome.co.uk/>