



萊英家

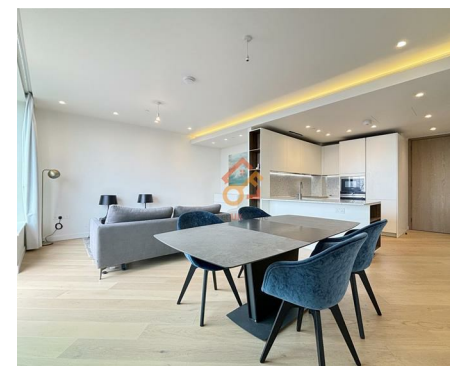
Let UK Home

2 Bedrooms

Flat

Located in London

£4,300 Per Month



[info@letukhome.co.uk](mailto:info@letukhome.co.uk)

<https://www.letukhome.co.uk/>

02045348146



# Apartment 611 6 Wood Crescent

London | | W12 7GS



Let UK Home are excited to offer this spectacular 2 bedroom apartment in the heart of Television Centre development located in White City, W12.

This property comprises a large bright open plan kitchen and living room leading to a private balcony, two double bedrooms with wardrobes(master en-suite), a large family sized bathroom and ample storage.

Residents benefit from a range of amenities including 24-hour concierge, residents lounge, screening room and meeting rooms. The Soho House managed gym occupies a circular space under the building with a luxury spa and 17 meter swimming pool.

Take a short walk and you will find a bustling town centre and Westfield shopping centre with niche coffee shops to satisfy even the most demanding high street shopper. Sitting pretty on the Centre Line & Hammersmith and City Line offers excellent transport links to both the centre of London and the rest of Europe via Heathrow. Imperial College London White City Campus and RCA White City are also within walking distance of the flat.

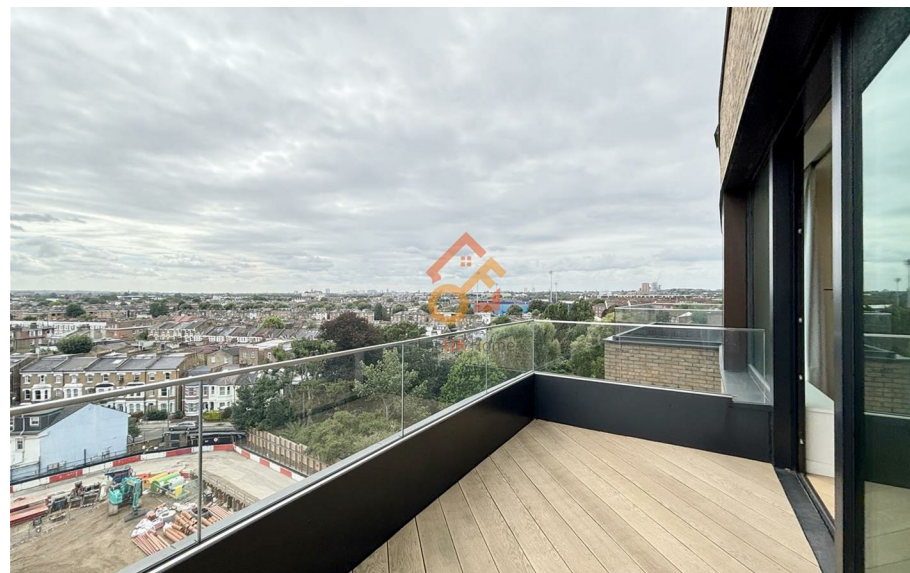


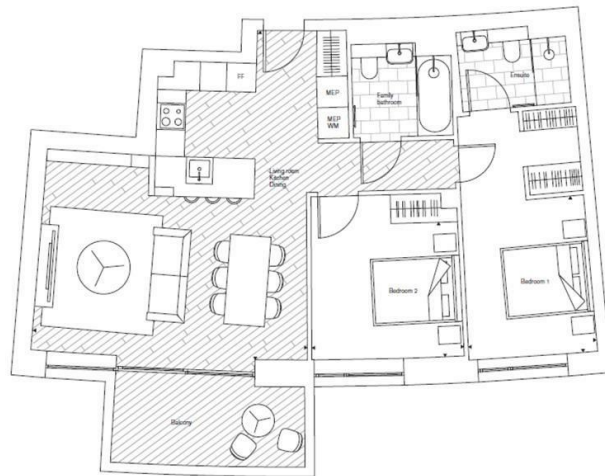
# Apartment 611 6 Wood Crescent

£4,300 Per Month



- 6th Floor
- The Spa
- The Gym
- 24h Security
- Cinema & Game Room
- Sauna & Steam Room
- Swimming Pool
- Concierge Service
- Residents Lounge
- Co-working Space





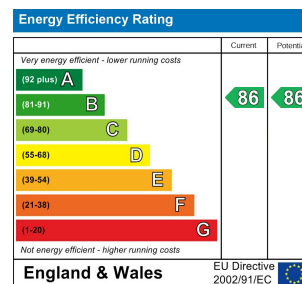
2 bedroom

Net saleable area	sq m	sq ft
	83.30	897
Room dimensions	m	ft
Living area	6.20 x 7.40	20'4" x 24'3"
Bedroom 1	2.90 x 3.40	9'6" x 11'2"
Bedroom 2	3.40 x 3.10	11'2" x 10'2"
Outdoor space	sq m	sq ft
Balcony	8.60	93

**Council Tax Band: F**

**Local Authority:**

Agents Note: Whilst every care has been taken to prepare these particulars, they are for guidance purposes only. All measurements are approximate and are for general guidance purposes only and whilst every care has been taken to ensure their accuracy, they should not be relied upon and potential buyers/tenants are advised to recheck the measurements.



6/F Two Kingdom Street

London

W2 6BD

02045348146

info@letukhome.co.uk

<https://www.letukhome.co.uk/>