



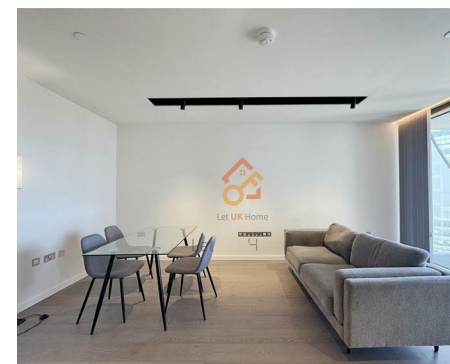
萊英家
Let UK Home

1 Bedrooms

Flat

Located in London

£3,300 Per Month



info@letukhome.co.uk

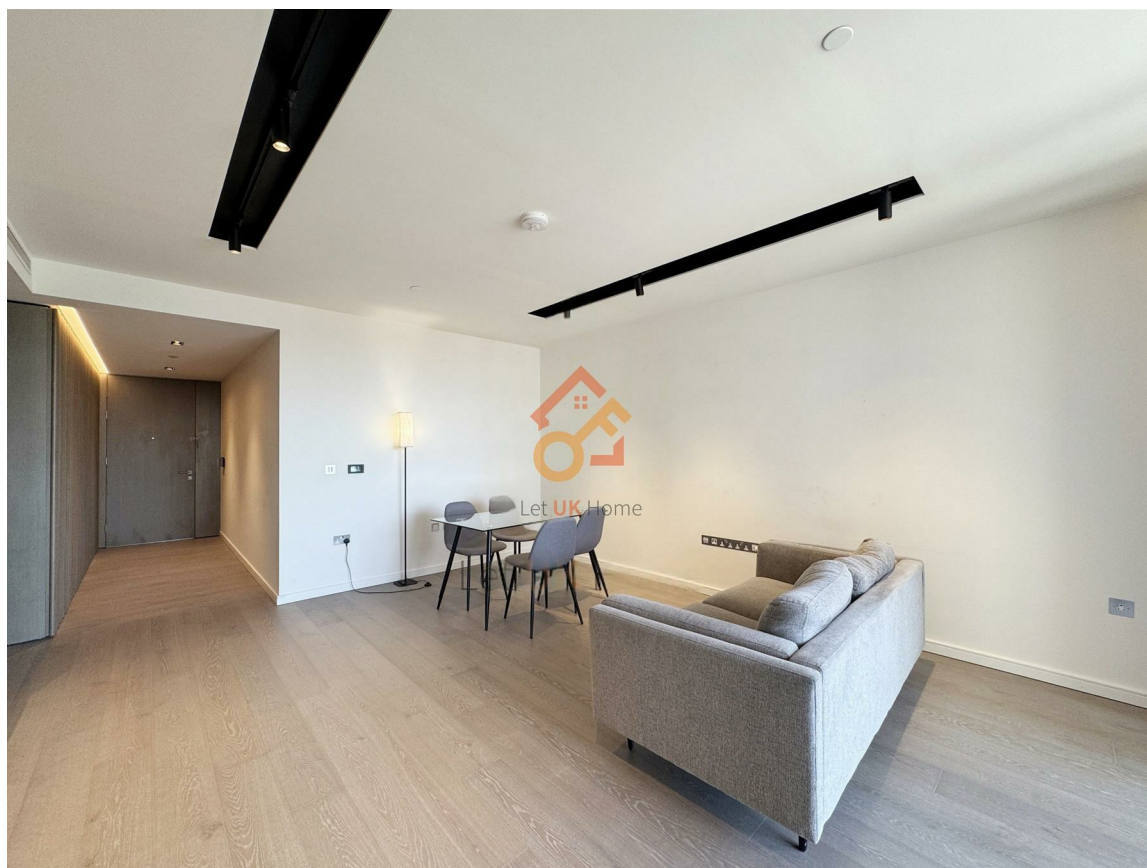
<https://www.letukhome.co.uk/>

02045348146



Apartment 1803 One Park Drive

London | | E14 9GG



Let UK Home are excited to offer this spectacular one bedroom apartment in the heart of One Park Drive situated in the south west corner of Wood Wharf, within the Canary Wharf development on the Isle of Dogs, London.

The flat comprises a spacious open kitchen with a stylishly attached dining area, a magnificent living room leading to a large private balcony with great views, one bright bedroom with built-in wardrobes and one modern bathroom.

The apartment is fully equipped with 24-hour concierge service, 20-meter swimming pool, sauna and steam room, gym, cinema, resident lounge, library, etc.

From the apartment, you can walk to UCL School of Management, and take the subway to Queen Mary University of London, University of Greenwich, University of Westminster, etc.

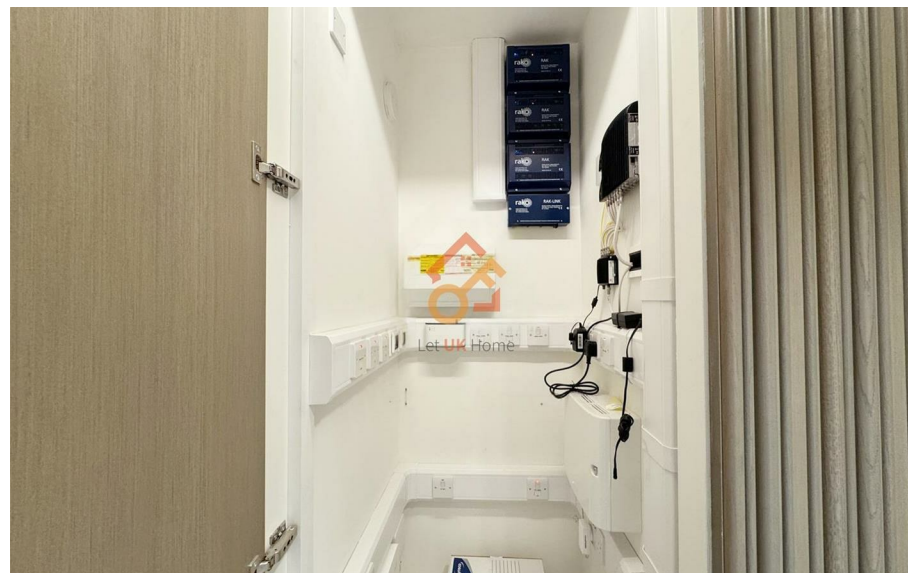
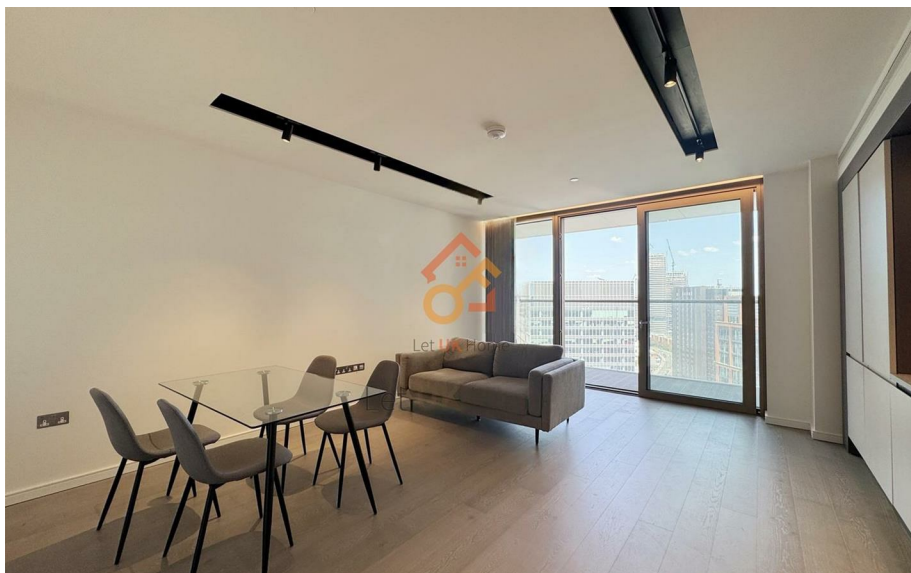
The surrounding facilities are complete, with 6 large shopping malls, Westfield Shopping Mall and O2 Entertainment City, which are popular among Londoners, are nearby, as well as various green spaces and parks.

Apartment 1803 One Park Drive

£3,300 Per Month



- 18th Floor
- 24h Security
- Swimming Pool
- Cinema & Game Room
- Library
- Concierge Service
- The Gym
- Sauna & Steam Room
- Residents Lounge



ONE PARK DRIVE
APPROXIMATE GROSS INTERNAL FLOOR AREA 717 SQ.FT (66.6 SQ.M)



HDVA

This floor plan has been defined by the RICS Code of Measurement. This floor plan and all others are for approximate representative purposes only and upon usage is agreed to as such by the client.
WWW: hdivirtualart.com | TEL: 0203.974.1567 | EMAIL: info@hdivirtualart.com



萊英家
Let **UK** Home

6/F Two Kingdom Street

London

W2 6BD

02045348146

info@letukhome.co.uk

Council Tax Band: New Build

Local Authority:

Agents Note: Whilst every care has been taken to prepare these particulars, they are for guidance purposes only. All measurements are approximate and are for general guidance purposes only and whilst every care has been taken to ensure their accuracy, they should not be relied upon and potential buyers/tenants are advised to recheck the measurements.

Energy Efficiency Rating		
	Current	Potential
Very energy efficient - lower running costs		
(92 plus) A		
(81-91) B	85	85
(69-80) C		
(55-68) D		
(39-54) E		
(21-38) F		
(1-20) G		
Not energy efficient - higher running costs		
England & Wales	EU Directive 2002/91/EC	

<https://www.letukhome.co.uk/>