

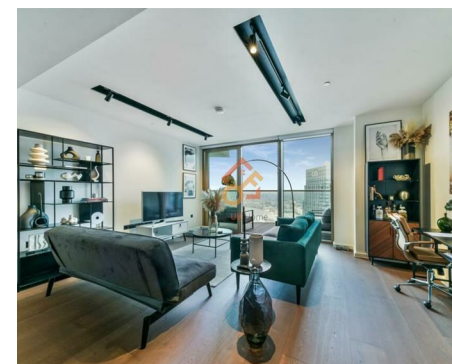
萊英家  
Let UK Home

1 Bedrooms

Flat

Located in London

£3,554 Per Month



[info@letukhome.co.uk](mailto:info@letukhome.co.uk)

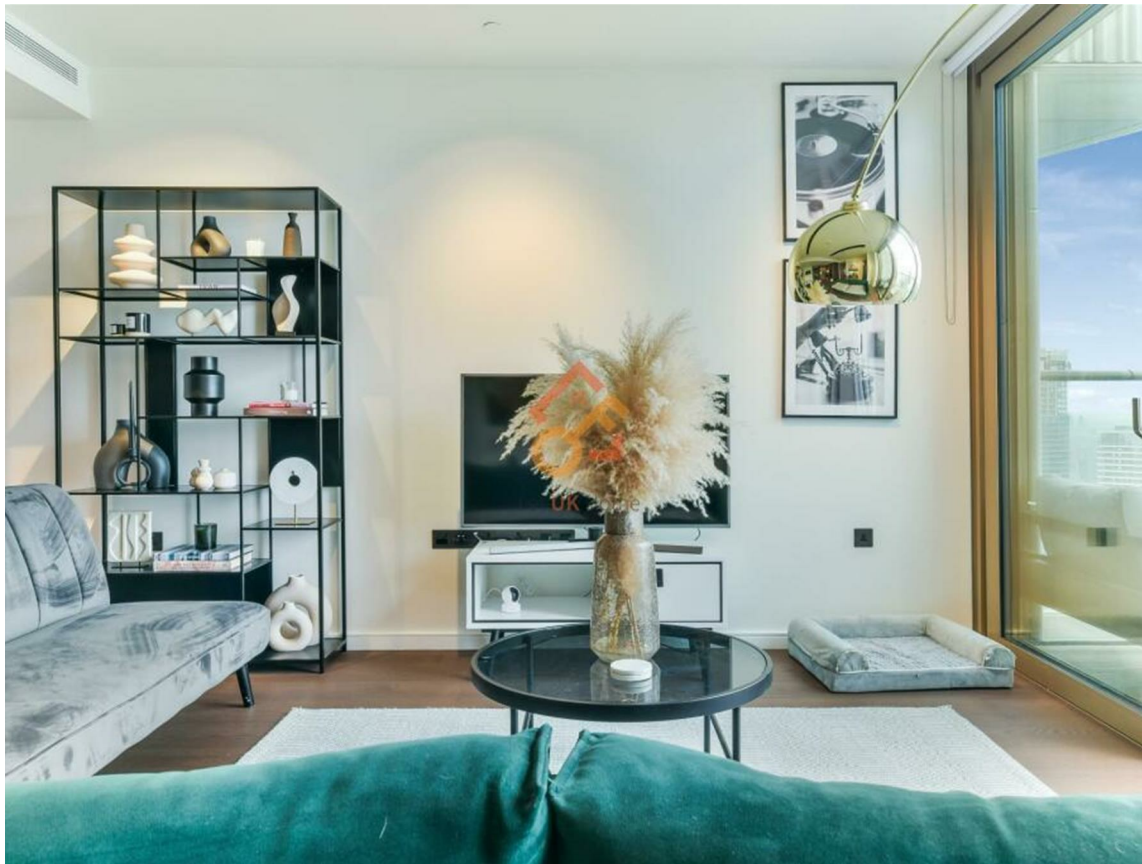
<https://www.letukhome.co.uk/>

02045348146



# Apartment 5008 One Park Drive

London | | E14 9GG



Let UK Home are excited to offer this spectacular one bedroom apartment in the heart of One Park Drive situated in the south west corner of Wood Wharf, within the Canary Wharf development on the Isle of Dogs, London.

The flat comprises a spacious open kitchen with a stylishly attached dining area, a magnificent living room leading to a large private balcony with great views, one bright bedroom with built-in wardrobes and one modern bathroom.

The apartment is fully equipped with 24-hour concierge service, 20-meter swimming pool, sauna and steam room, gym, cinema, resident lounge, library, etc.

From the apartment, you can walk to UCL School of Management, and take the subway to Queen Mary University of London, University of Greenwich, University of Westminster, etc.

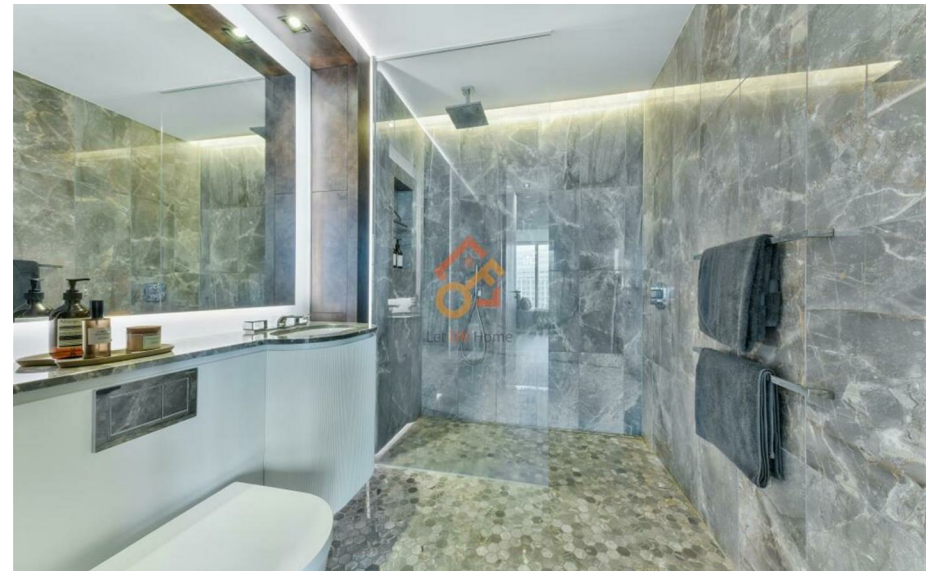
The surrounding facilities are complete, with 6 large shopping malls, Westfield Shopping Mall and O2 Entertainment City, which are popular among Londoners, are nearby, as well as various green spaces and parks.

# Apartment 5008 One Park Drive

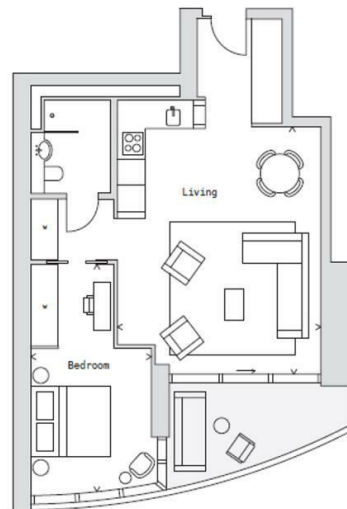
£3,554 Per Month



- 50th Floor
- 24h Security
- Swimming Pool
- Cinema & Game Room
- Library
- Concierge Service
- The Gym
- Sauna & Steam Room
- Residents Lounge



| BAY   | LOCATION                | DATA                                      | IMPERIAL   | METRIC  |
|-------|-------------------------|---|--|---|
| 1 BED | Floorplate K<br>Page 79 | Apartment<br>Terrace<br>Living<br>Bedroom | 706 sq ft<br>99 sq ft<br>20' 06" x 17' 00"<br>19' 01" x 9' 10" | 65.6 sq m<br>9.2 sq m<br>6.25 x 5.19 m<br>5.82 x 3.00 m |



6/F Two Kingdom Street  
London  
W2 6BD

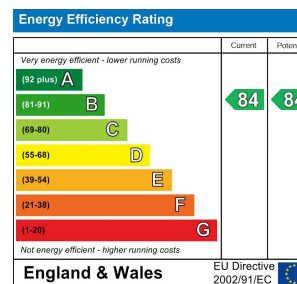
02045348146

info@letukhome.co.uk

## Council Tax Band: New Build

## Local Authority:

Agents Note: Whilst every care has been taken to prepare these particulars, they are for guidance purposes only. All measurements are approximate and are for general guidance purposes only and whilst every care has been taken to ensure their accuracy, they should not be relied upon and potential buyers/tenants are advised to recheck the measurements.



<https://www.letukhome.co.uk/>