



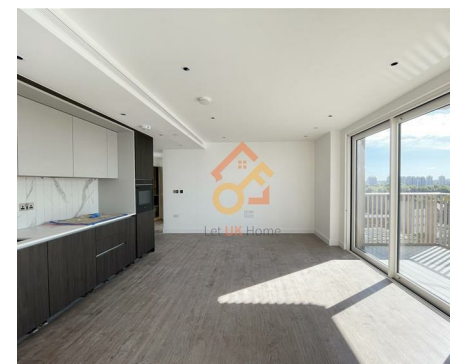
萊英家
Let UK Home

2 Bedrooms

Flat

Located in London

£4,000 Per Month



info@letukhome.co.uk

<https://www.letukhome.co.uk/>

02045348146



Flat 62, Juniper Gardens 9 Gasholder Place

London | | SE11 5BB



Let UK Home are excited to offer this spectacular two bedroom in the heart of Oval Village in Vauxhall.

This property comprises a large bright open plan kitchen and living room leading to a large private balcony with great views, two double bedrooms(master with fitted wardrobes and en-suite), a large family sized bathroom and ample storage.

Residents of this exceptional development have exclusive use of the spa, indoor swimming pool, sauna, gymnasium and private screening room. Furthermore, residents will also benefit from a 24 hour concierge and an unrivalled selection of shops, bars, restaurants, leisure facilities and beautiful landscaped courtyards.

The apartment is surrounded by three subway lines. It is within walking distance of three subway stations, Vauxhall, Oval and Kennington, and two subway lines, Victoria Line and Northern Line, which can lead to all important stations in central London.

The apartment is close to the Kia Cricket Ground, which is the cricket ground with the most cricket matches in the UK. At the same time, daily life is very convenient, there is a large Tesco downstairs, and it is close to Kennington Park and the US Embassy.

Flat 62, Juniper Gardens 9 Gasholder Place

£4,000 Per Month



- 9th Floor
- Swimming Pool
- 24h Security
- Residents Lounge
- The Gym
- Cinema & Game Room
- Concierge Service
- Co-working Space





萊英家
Let **UK** Home

6/F Two Kingdom Street
London
W2 6BD

02045348146

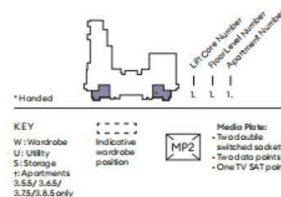
info@letukhome.co.uk



Apartment:	24.5 / 25.5 / 26.5 / 27.3 / 28.3 / 29.3 / 210.3 / 211.3 / 212.3 / 35.5* / 36.5* / 37.5* / 38.2*
Living / Kitchen / Dining	5.72 x 4.56m 18'7" x 14'9"
Bedroom 1	2.75 x 3.0m 9'0" x 9'10"
Bedroom 2	2.75 x 4.12m 9'0" x 13'6"
Balcony	4.0 x 1.75m 13'1" x 5'9"
Total Net Internal Area	75.1 sq m 808 sq ft

Measurements are for guidance only. Exact layout and sizes may vary. All measurements may vary within a tolerance of 5%. To increase legibility, these plans have been sized to fit the page, therefore each plan may be at a different scale to others within this brochure.

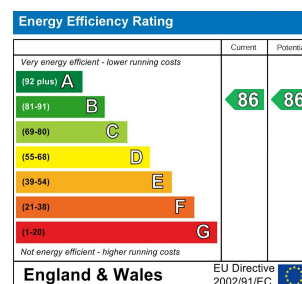
92



Council Tax Band: New Build

Local Authority:

Agents Note: Whilst every care has been taken to prepare these particulars, they are for guidance purposes only. All measurements are approximate and are for general guidance purposes only and whilst every care has been taken to ensure their accuracy, they should not be relied upon and potential buyers/tenants are advised to recheck the measurements.



<https://www.letukhome.co.uk/>