



萊英家  
Let UK Home

1 Bedrooms

Flat

Located in Wembley

£2,150 Per Month



[info@letukhome.co.uk](mailto:info@letukhome.co.uk)

<https://www.letukhome.co.uk/>

02045348146



# Flat 97 581 North End Road

## Wembley | | HA9 0UT



Let UK Home are excited to offer this spectacular one bedroom apartment in No.10 Watkin Road, right in the heart of Wembley Park.

The flat comprises a spacious open kitchen with a stylishly attached dining area, a magnificent living room leading to a private balcony, one bright bedroom with built-in wardrobes and one modern bathroom.

Located just moments from Wembley Park Station, this home provides exceptional transport links via the Jubilee and Metropolitan lines, offering fast connections to Central London. Wembley Park is also home to an array of boutique shops, restaurants, entertainment venues, and the iconic Wembley Stadium, placing everything you need right at your doorstep. Stylish shopping and unique restaurants can be found in the nearby London designer outlet centre.

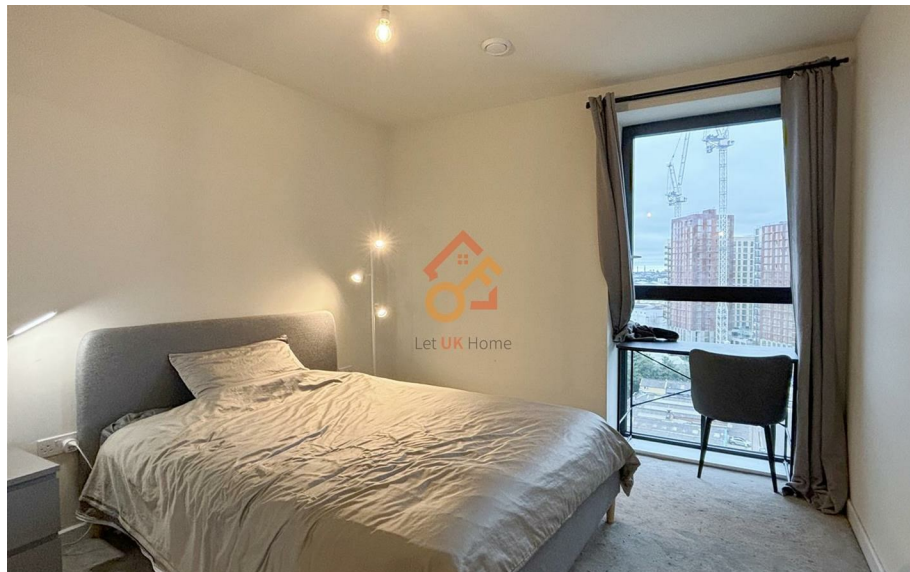


# Flat 97 581 North End Road

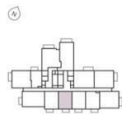
£2,150 Per Month

- 12th Floor
- Private Balcony

- Rooftop Terrace



No.10 Watkin Road, Wembley  
1 bedroom  
apartment



| Floor | Plot |
|-------|------|
| 23    |      |
| 22    |      |
| 21    |      |
| 20    |      |
| 19    | 206  |
| 18    | 196  |
| 17    | 186  |
| 16    | 174  |
| 15    | 162  |
| 14    | 150  |
| 13    | 138  |
| 12    | 126  |
| 11    | 114  |
| 10    | 102  |
| 9     | 90   |
| 8     | 78   |
| 7     | 66   |
| 6     | 54   |
| 5     |      |
| 4     |      |
| 3     |      |
| 2     |      |
| 1     |      |
| G     |      |

PLOTS 54, 66, 78, 90, 102, 114,  
126, 138, 150, 162, 174, 186,  
198, 206

Kitchen/Living/Dining  
25'1" x 10'1" (7660 x 3072mm)

Bedroom  
12'3" x 10'2" (3722 x 3108mm)

Bathroom  
7'0" x 6'7" (2150 x 2050mm)

**TOTAL AREA**  
538 sq ft (50 sq m)

Balcony  
11'1" x 5'4" (3380 x 1650mm)



6/F Two Kingdom Street  
London  
W2 6BD

02045348146

info@letukhome.co.uk

**Council Tax Band: C**

**Local Authority:**

Agents Note: Whilst every care has been taken to prepare these particulars, they are for guidance purposes only. All measurements are approximate and are for general guidance purposes only and whilst every care has been taken to ensure their accuracy, they should not be relied upon and potential buyers/tenants are advised to recheck the measurements.

| Energy Efficiency Rating                    |  | Current                 | Potential |
|---|--|-------------------------|-----------|
| Very energy efficient - lower running costs |  |                         |           |
| (92 plus) A                                 |  |                         |           |
| (81-91) B                                   |  | 84                      | 84        |
| (69-80) C                                   |  |                         |           |
| (55-68) D                                   |  |                         |           |
| (39-54) E                                   |  |                         |           |
| (21-38) F                                   |  |                         |           |
| (1-20) G                                    |  |                         |           |
| Not energy efficient - higher running costs |  |                         |           |
| England & Wales                             |  | EU Directive 2002/91/EC |           |

<https://www.letukhome.co.uk/>