



萊英家  
Let UK Home

2 Bedrooms

Flat

Located in London

£2,650 Per Month



[padmin@letukhome.co.uk](mailto:padmin@letukhome.co.uk)

<https://www.letukhome.co.uk/>

020 4534 8145



# 91 Pendant Court 4 Shipwright Street

London | | E16 2TG



Let UK Home are excited to offer this spectacular two bedroom apartment in the heart of Pendant Court part of the Royal Wharf development.

This property comprises a large bright open plan kitchen and living room leading to a large private balcony with great views, two double bedrooms with wardrobes (master with en-suite and leading to a private balcony), a large family sized bathroom and ample storage.

Residents of this exceptional development have exclusive use of swimming pool and gymnasium. Furthermore, residents will also benefit from a 24 hour concierge and an unrivalled selection of shops, bars, restaurants, leisure facilities and beautiful courtyards.

Royal Wharf is located in Royal Docks, with beautiful river views of River Thames. It is within walking distance of Greenwich Peninsula Ecology Park and has close contact with nature. Close to DRL and underground stations, it can quickly reach famous areas such as Canary Wharf and London City Airport. There are many universities in the surrounding area, and you can reach UCL School of Management and the University of Greenwich within half an hour. There are supporting facilities such as supermarkets, restaurants, bars and cafes in the community. There is also a large shopping centre in the surrounding area, Westfield Stratford City, with numerous shops and dining options.

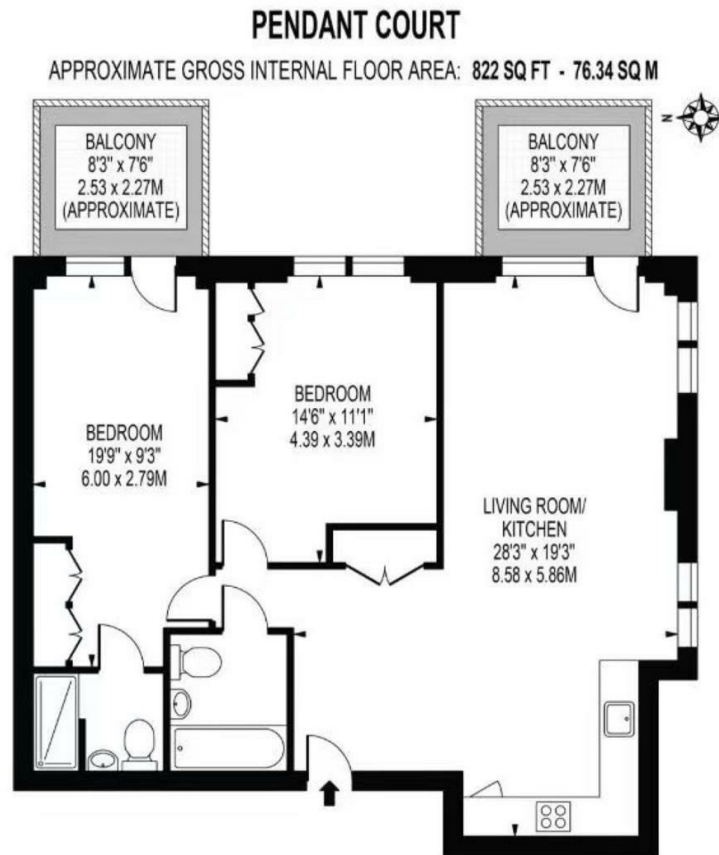
# 91 Pendant Court 4 Shipwright Street

## £2,650 Per Month



- 7th Floor
- 24h Security
- The Gym
- Concierge Service
- Swimming Pool





6/F Two Kingdom Street  
 London  
 W2 6BD

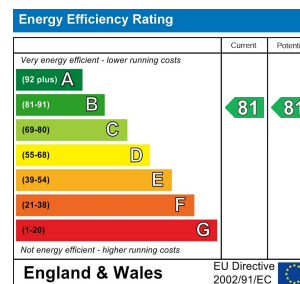
020 4534 8145

pmadmin@letukhome.co.uk

**Council Tax Band: E**

**Local Authority:**

Agents Note: Whilst every care has been taken to prepare these particulars, they are for guidance purposes only. All measurements are approximate and are for general guidance purposes only and whilst every care has been taken to ensure their accuracy, they should not be relied upon and potential buyers/tenants are advised to recheck the measurements.



<https://www.letukhome.co.uk/>