



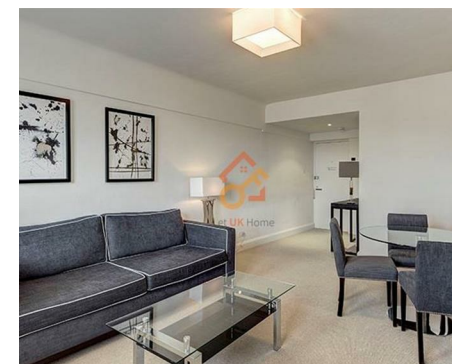
萊英家
Let UK Home

2 Bedrooms

Flat

Located in London

£4,095 Per Month



pmadmin@letukhome.co.uk

<https://www.letukhome.co.uk/>

020 4534 8145



Unit 54, Pelham Court 145 Fulham Road

London | | SW3 6SH



Located in the heart of Chelsea this spacious, two bedroom two bathroom apartment, looks directly out on to the private communal gardens of Pelham Court.

This apartment contains a large reception room, a separate kitchen, two bright bedrooms and two bathrooms, one with shower and the other with a bath.

The property is available to rent furnished or unfurnished.

Unit 54, Pelham Court 145 Fulham Road

£4,095 Per Month



- 4th Floor
- Walking distance to both South Kensington & Kings Road
- 24 hour emergency helpline & service
- Flexible rental terms
- Desirable central Chelsea location
- Dedicated property manager
- Offered furnished or unfurnished
- Lifts/Porter/Recycling/Shops/Video Entry

54 PELHAM COURT, SW3

APPROX. GROSS INTERNAL AREA *
698 Ft² - 64.84 M²

ILLUSTRATION FOR IDENTIFICATION PURPOSES ONLY. NOT TO SCALE
* As Defined by RICS - Code of Measuring Practice



FOURTH FLOOR



萊英家
Let **UK** Home

6/F Two Kingdom Street

London

W2 6BD

020 4534 8145

pmadmin@letukhome.co.uk

Council Tax Band: C

Local Authority:

Agents Note: Whilst every care has been taken to prepare these particulars, they are for guidance purposes only. All measurements are approximate and are for general guidance purposes only and whilst every care has been taken to ensure their accuracy, they should not be relied upon and potential buyers/tenants are advised to recheck the measurements.

Energy Efficiency Rating		
	Current	Potential
Very energy efficient - lower running costs		
(92 plus) A		
(81-91) B		
(69-80) C		
(55-68) D		
(39-54) E		
(21-38) F		
(1-20) G		
Not energy efficient - higher running costs		
England & Wales		EU Directive 2002/91/EC

<https://www.letukhome.co.uk/>