



萊英家  
Let UK Home

2 Bedrooms

Flat

Located in London

£4,875 Per Month



[padmin@letukhome.co.uk](mailto:padmin@letukhome.co.uk)

<https://www.letukhome.co.uk/>

020 4534 8145



## Unit 1B, Pond Place 161 Fulham Road

London | | SW3 6SN



A large, two double bedrooms (887 sq ft) apartment in this private portered building with lift, located in the heart of South Kensington.

The apartment comprises a fantastic reception area perfect for entertaining leading to an open plan modern kitchen with fully integrated Neff appliances and stone worktops. Floor to ceiling windows across one side of the reception room bring a wonderful sense of space to the room and fill the property with an abundance of natural light.

Both double bedrooms offer ample storage space, with the master bedroom suite comprising of a large en-suite bathroom with a raindrop shower over the bath and automatic sensor lighting. The family bathroom features a double walk-in shower, with automatic lighting.

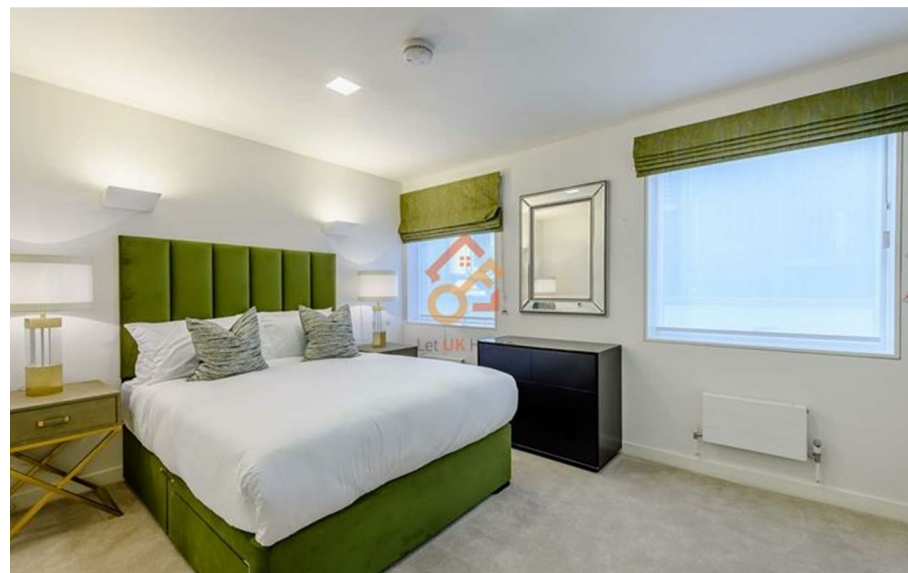
The property is available to rent furnished or unfurnished.

# Unit 1B, Pond Place 161 Fulham Road

## £4,875 Per Month



- 1st Floor
- Superfast Broadband | High specification
- Pet Friendly | Lift Service
- No agency fees | Short walk from South Kensington Underground Station
- Recycling
- Interior Designed | Secure Underground Parking
- Dedicated Building Manager | On-Site Porter | CCTV
- Flexible Rental Terms | Available Furnished & Unfurnished
- Video Entry
- CCTV





**APPROX. GROSS INTERNAL AREA \***  
**887 Ft<sup>2</sup> - 82.40 M<sup>2</sup>**



**萊英家**  
 Let **UK** Home

6/F Two Kingdom Street

London

W2 6BD

020 4534 8145

pmadmin@letukhome.co.uk

**Council Tax Band: E**

**Local Authority:**

Agents Note: Whilst every care has been taken to prepare these particulars, they are for guidance purposes only. All measurements are approximate and are for general guidance purposes only and whilst every care has been taken to ensure their accuracy, they should not be relied upon and potential buyers/tenants are advised to recheck the measurements.

Energy Efficiency Rating		Current	Potential
Very energy efficient - lower running costs			
(92 plus)	A		
(81-91)	B		
(69-80)	C		
(55-68)	D		
(39-54)	E		
(21-38)	F		
(1-20)	G		
Not energy efficient - higher running costs			
England & Wales		EU Directive 2002/91/EC	

<https://www.letukhome.co.uk/>