



萊英家  
Let UK Home

2 Bedrooms

Flat

Located in London

£3,900 Per Month



[pmadmin@letukhome.co.uk](mailto:pmadmin@letukhome.co.uk)

<https://www.letukhome.co.uk/>

020 4534 8145



## Unit 6 161 Fulham Road

London | | SW3 6SN



A large, two double bedroom apartment set on the second floor in this quiet, modern private ported building, located in the heart of Chelsea.

The apartment consists of large reception room and bright modern kitchen with fully integrated appliances. It has large windows running along one side of the reception room giving the room a fantastic sense of openness and space.

The property is newly decorated and is fully furnished with brand new, quality modern furniture.

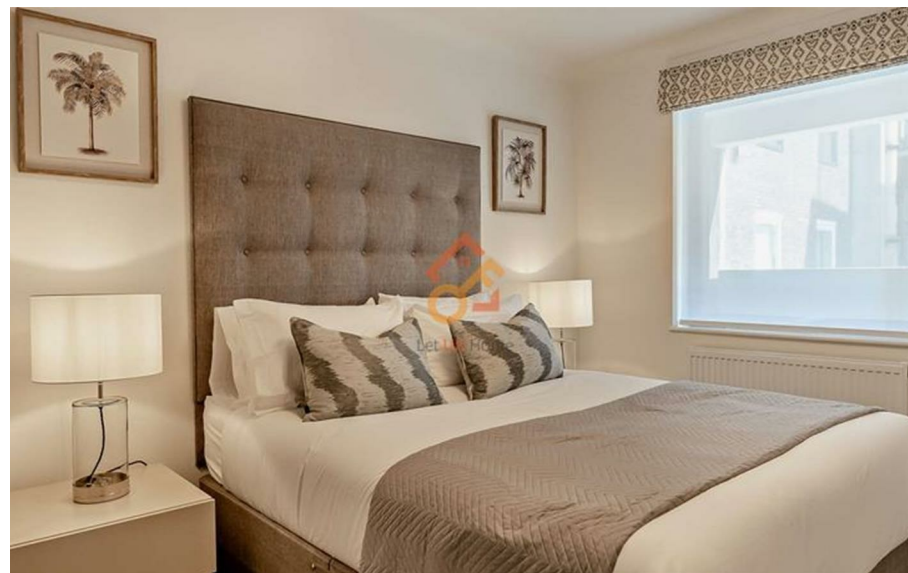
# Unit 6 161 Fulham Road

## £3,900 Per Month



- 2nd Floor
- 24 hour maintenance service
- Central Chelsea location
- No agency fees
- Video Entry/CCTV

- Porter
- Recently refurbished
- Walking distance to both South Kensington & Kings Road
- Recycling
- Available furnished or unfurnished





**APPROX. GROSS INTERNAL AREA \***  
**665 Ft<sup>2</sup> - 61.78 M<sup>2</sup>**



6/F Two Kingdom Street  
 London  
 W2 6BD

020 4534 8145

pmadmin@letukhome.co.uk

**Council Tax Band: E**

**Local Authority:**

Agents Note: Whilst every care has been taken to prepare these particulars, they are for guidance purposes only. All measurements are approximate and are for general guidance purposes only and whilst every care has been taken to ensure their accuracy, they should not be relied upon and potential buyers/tenants are advised to recheck the measurements.

Energy Efficiency Rating		
	Current	Potential
Very energy efficient - lower running costs		
(92 plus) <b>A</b>		
(81-91) <b>B</b>		
(69-80) <b>C</b>		
(55-68) <b>D</b>		
(39-54) <b>E</b>		
(21-38) <b>F</b>		
(1-20) <b>G</b>		
Not energy efficient - higher running costs		
England & Wales		
EU Directive 2002/91/EC		

<https://www.letukhome.co.uk/>