



萊英家  
Let UK Home

1 Bedrooms

Flat

Located in London

£2,300 Per Month



[pmadmin@letukhome.co.uk](mailto:pmadmin@letukhome.co.uk)

<https://www.letukhome.co.uk/>

020 4534 8145



# Flat 304, Barnacle House 1 Hemlock Street

London | | E14 0YW



Let UK Home present this brand new one bedroom property in Barnacle House, part of Porter House in the Poplar Riverside development.

This property comprises a large bright open plan kitchen and living room leading to a large private balcony with great views, one double bedrooms with wardrobes, a modern bathroom and ample storage.

Residents of this exceptional development have exclusive use of the spa including sauna, steam and salt inhalation room, 20m swimming pool and vitality pool with wellness features, experience shower, changing rooms, cinema room, games room and card room, private meeting rooms, co-working space, residents' den lounge, private call booth and so on. Furthermore, residents will also benefit from a 24 hour concierge and an unrivalled selection of shops, bars, restaurants, leisure facilities and beautiful courtyards.

The property is within walking distance of Langdon Park, All Saints and East India for DLR. Residents of Poplar Riverside only need a short journey to the bustling business district of Canary Wharf, and a bicycle ride to the famous shopping mall in East London - Westfield. Residents can easily reach the commercial high street Bond Street, Heathrow International Airport.

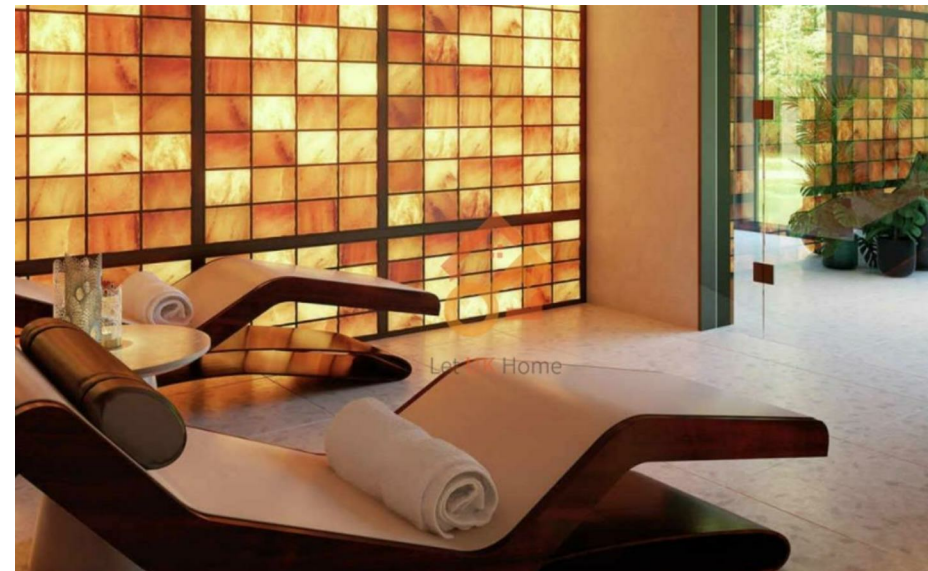
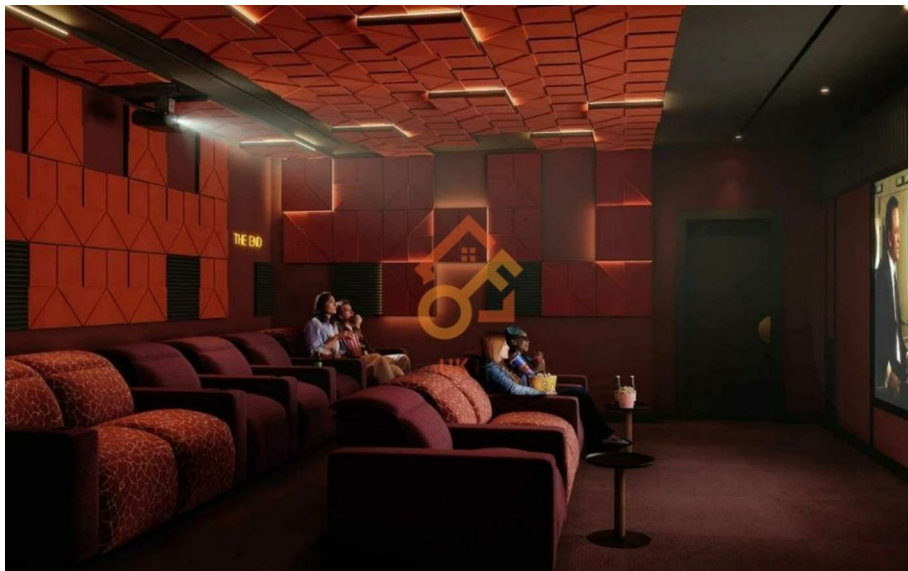


# Flat 304, Barnacle House 1 Hemlock Street

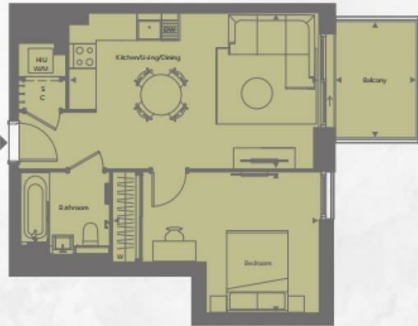
£2,300 Per Month



- 3rd Floor
- 24h Security
- The Spa
- Sauna & Steam Room
- Residents Lounge
- Concierge Service
- Swimming Pool
- Cinema & Game Room
- Co-working Space



**PORTER  
HOUSE**



## ONE BEDROOM TYPE 009

LEVELS	G3-14	
PLOTS	A1034, A1044, A1054, A1063, A1073, A1083, A1093, A1103, A1113, A1123, A1133, A1143	
INTERNAL MEASUREMENTS	46.7 m <sup>2</sup>	503 sq ft
EXTERNAL MEASUREMENTS	6.3m <sup>2</sup>	68 sq ft
KITCHEN/LIVING/DINING	4.09 x 3.29 m	19ft 11" x 10ft 4"
BEDROOM	3.03 x 3.42 m	10ft 6" x 11ft 2"
BALCONY	2.08 x 2.08 m	6ft 5" x 6ft 8"



### KEY

- WF: FITTED WARDROBE
- U: UTILITY
- S: STORAGE
- DW: DISHWASHER
- C: COAT CUPBOARD
- HU: HEAT INTERFACE UNIT
- WM: WASHING MACHINE
- [ ]: OPTIONAL CUSTOMER UPGRADE

Figures shown for Porter House at Porter House are for approximate measurements only. Exact figures will vary. All measurements may vary within a tolerance of 3%. The dimensions are not intended to be used for a particular purpose or for any other purpose. Builders' notes are subject to change.



**萊英家**  
Let **UK** Home

6/F Two Kingdom Street

London

W2 6BD

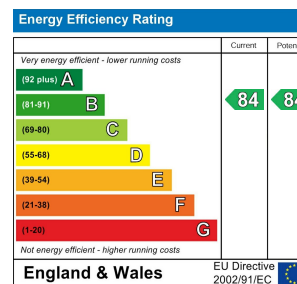
020 4534 8145

[pmadmin@letukhome.co.uk](mailto:pmadmin@letukhome.co.uk)

**Council Tax Band: New Build**

**Local Authority:**

Agents Note: Whilst every care has been taken to prepare these particulars, they are for guidance purposes only. All measurements are approximate and are for general guidance purposes only and whilst every care has been taken to ensure their accuracy, they should not be relied upon and potential buyers/tenants are advised to recheck the measurements.



<https://www.letukhome.co.uk/>