



萊英家

Let UK Home

1 Bedrooms

Flat

Located in London

£3,600 Per Month



padmin@letukhome.co.uk

<https://www.letukhome.co.uk/>

020 4534 8145



Flat 2202, Principal Tower 2 Principal Place, Worship

London | | EC2A 2FE



Let UK Home are excited to offer this spectacular one bedroom apartment in the heart of Principal Tower in City of London.

The flat comprises a spacious open kitchen with a stylishly attached dining area, a magnificent living room leading to a private balcony, one bright bedroom with fitted wardrobe and ensuite..

The apartment has facilities such as 24-hour concierge service, swimming pool, spa, gym, audio-visual room and private business lounge.

The apartment is close to the City of London, one of the most important financial centers in the world, and Shoreditch, one of the most creative and individual areas in London, with many cultural venues such as galleries, theater museums, and concert halls.

Flat 2202, Principal Tower 2 Principal Place, £3,600 Per Month

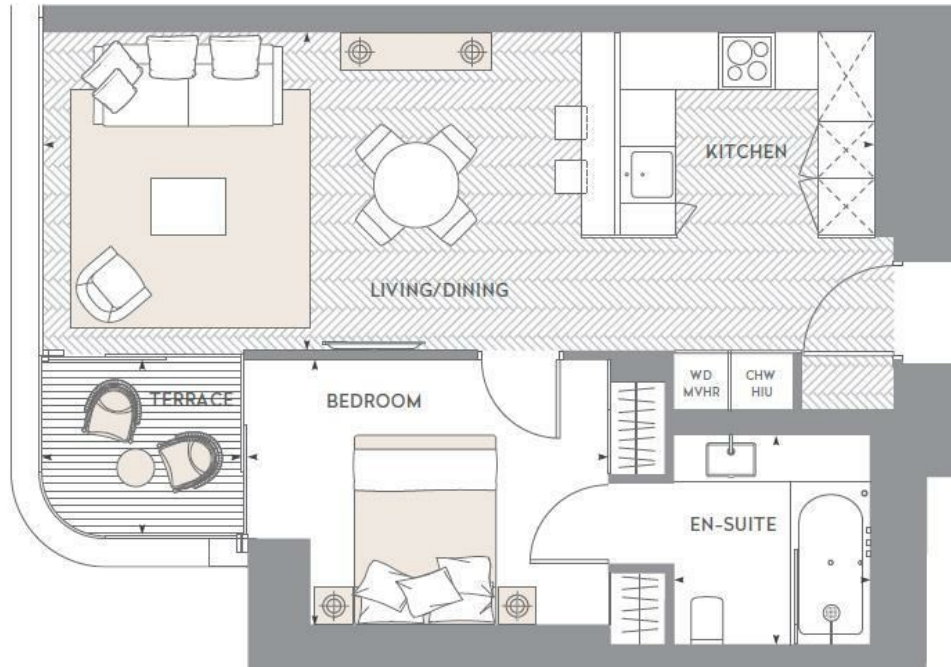


- 22nd Floor
- 24h Security
- The Gym
- The Spa
- Concierge Service
- Swimming Pool
- Cinema & Game Room
- Residents Lounge



Total floor area

81 square metres



萊英家
Let **UK** Home

6/F Two Kingdom Street

London

W2 6BD

020 4534 8145

pmadmin@letukhome.co.uk

Council Tax Band: E

Local Authority:

Agents Note: Whilst every care has been taken to prepare these particulars, they are for guidance purposes only. All measurements are approximate and are for general guidance purposes only and whilst every care has been taken to ensure their accuracy, they should not be relied upon and potential buyers/tenants are advised to recheck the measurements.

Energy Efficiency Rating		
	Current	Potential
Very energy efficient - lower running costs		
(92 plus) A		
(81-91) B	85	85
(69-80) C		
(55-68) D		
(39-54) E		
(21-38) F		
(1-20) G		
Not energy efficient - higher running costs		
England & Wales		
EU Directive 2002/91/EC		

<https://www.letukhome.co.uk/>