



萊英家

Let UK Home

1 Bedrooms

Flat

Located in London

£1,850 Per Month



[padmin@letukhome.co.uk](mailto:padmin@letukhome.co.uk)

<https://www.letukhome.co.uk/>

020 4534 8145



# Flat 40 Cornwell House 13 Ron Leighton Way

London | | E6 1EQ



Let UK Home are excited to offer this spectacular one bedroom apartment in the heart of Cornwell House part of the New Market Place.

The flat comprises a spacious open kitchen with a stylishly attached dining area, a magnificent living room leading to a private balcony, one bright bedroom with fitted wardrobes and one modern bathroom.

The community provides residents with a variety of leisure lifestyles, including entertainment and fitness facilities, as well as open-air balconies for residents to relax

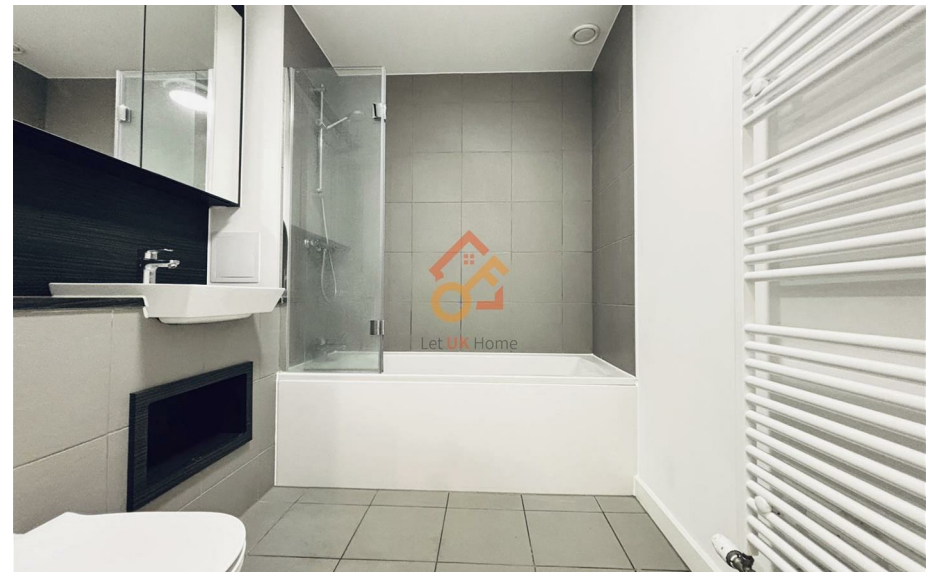
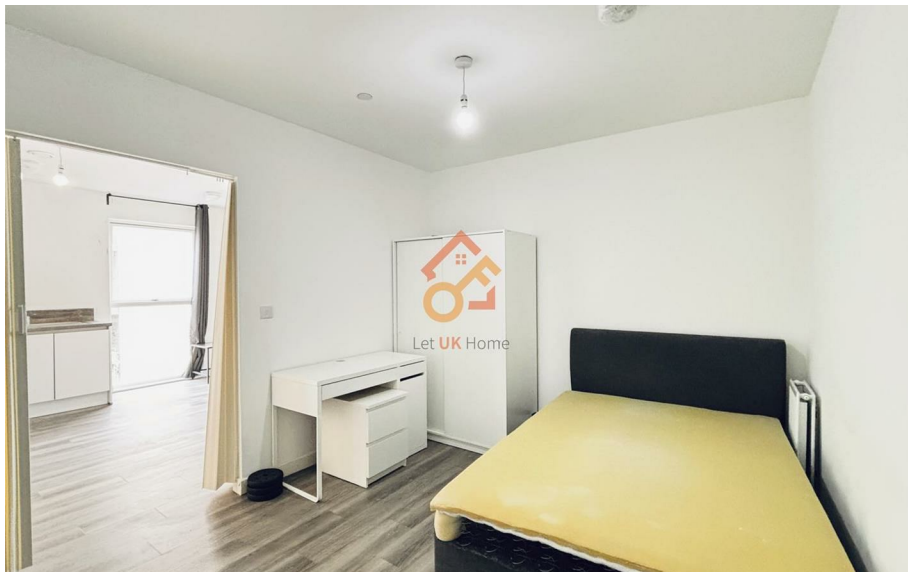
Cornwell House is conveniently located within close proximity of East Ham underground Station providing great transport links into the City and is within a short walk of local shops. Next to the apartment is a trendy pedestrian street. There are many niche shops and global stores, as well as various independent restaurants, bakeries and cafes. You can spend your weekends on this pedestrian street. The apartment is not far from Central Park, with green spaces everywhere and green bicycle loops, so residents can fully enjoy the fun of outdoor sports.

# Flat 40 Cornwell House 13 Ron Leighton Way

£1,850 Per Month



- 6th Floor
- Close to Transport Links
- Private Balcony
- Close to Local Shops
- Walking Distance to Universities



Plot 41 ☆

TYPE S01

RAINE HOUSE

SIXTH FLOOR

1 BEDROOM APARTMENT

✉

Prices

Dimensions

Kitchen/Living/Dining

3879 mm x 3806 mm

Bedroom

3812 mm x 3000 mm

Bathroom

2300 mm x 2085 mm

Balcony

2597 mm x 2050 mm

TOTAL

41.96 sq.m

Floor plan

BARRATT LONDON



6/F Two Kingdom Street  
London  
W2 6BD

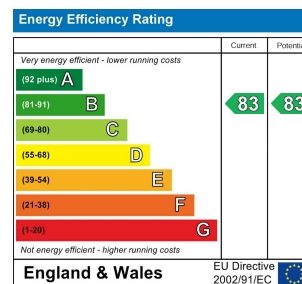
020 4534 8145

pmadmin@letukhome.co.uk

**Council Tax Band: B**

**Local Authority:**

Agents Note: Whilst every care has been taken to prepare these particulars, they are for guidance purposes only. All measurements are approximate and are for general guidance purposes only and whilst every care has been taken to ensure their accuracy, they should not be relied upon and potential buyers/tenants are advised to recheck the measurements.



<https://www.letukhome.co.uk/>