



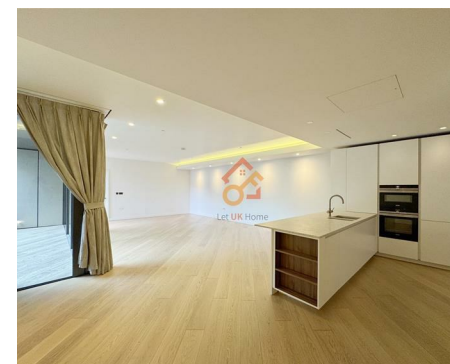
萊英家
Let **UK** Home

2 Bedrooms

Flat

Located in London

£3,500 Per Month



pmadmin@letukhome.co.uk

<https://www.letukhome.co.uk/>

020 4534 8145



502, The Helios 101 Wood Lane

London | | W12 7FT



Let UK Home are excited to offer this spectacular two bedroom apartment in The Helios, part of the Television Centre development, located in White City, W12.

This property comprises a large bright open plan kitchen and living room leading to a large private balcony with great views, two double bedrooms with wardrobes(master with ensuite), a large family sized bathroom, a toilet room and ample storage.

Residents benefit from a range of amenities including 24-hour concierge, residents lounge, screening room and meeting rooms. The Soho House managed gym occupies a circular space under the building with a luxury spa and 17 meter swimming pool.

Take a short walk and you will find a bustling town centre and Westfield shopping centre with niche coffee shops to satisfy even the most demanding high street shopper. Sitting pretty on the Centre Line & Hammersmith and City Line offers excellent transport links to both the centre of London and the rest of Europe via Heathrow. Imperial College London White City Campus and RCA White City are also within walking distance of the flat.

502, The Helios 101 Wood Lane

£3,500 Per Month



- 5th Floor
- 24h Security
- Swimming Pool
- Residents Lounge
- Co-working Space
- Concierge Service
- The Spa
- The Gym
- Cinema & Game Room
- Sauna & Steam Room



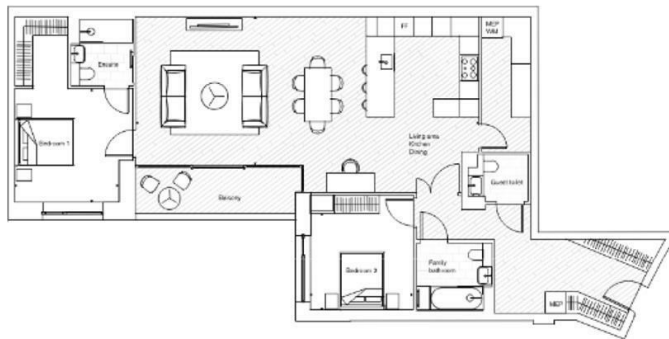
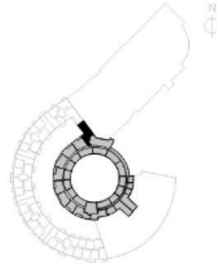
2 bedroom
Apartment H.502

5th floor

Net saleable area	sq m	sq ft
	140.70	1514

Room dimensions	m	ft
Living area	5.10 x 11.60	16'9" x 38'1"
Bedroom 1	3.50 x 3.90	11'6" x 12'9"
Bedroom 2	3.50 x 3.30	11'6" x 10'10"

Other:
Outside space: balcony
Wheelchair accessible unit



6/F Two Kingdom Street

London

W2 6BD


020 4534 8145

pmadmin@letukhome.co.uk

Council Tax Band: G

Local Authority:

Agents Note: Whilst every care has been taken to prepare these particulars, they are for guidance purposes only. All measurements are approximate and are for general guidance purposes only and whilst every care has been taken to ensure their accuracy, they should not be relied upon and potential buyers/tenants are advised to recheck the measurements.

Energy Efficiency Rating		Current	Potential
Very energy efficient - lower running costs			
(92 plus) A		89	89
(81-91) B			
(69-80) C			
(55-68) D			
(39-54) E			
(21-38) F			
(1-20) G			
Not energy efficient - higher running costs			
England & Wales		EU Directive 2002/91/EC	

<https://www.letukhome.co.uk/>