



萊英家

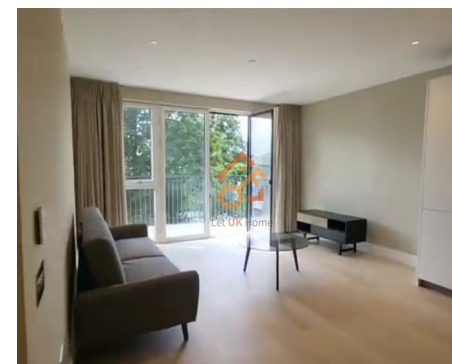
Let UK Home

1 Bedrooms

Flat

Located  
in Toddington

£2,625 Per Month



[pmadmin@letukhome.co.uk](mailto:pmadmin@letukhome.co.uk)

<https://www.letukhome.co.uk/>

020 4534 8145



# Flat 32, Carlton House, 2, Pinewood Gardens Broom

Teddington | | TW11 9FB



Let UK Home are excited to offer this spectacular studio apartment in Carlton House part of the Teddington Riverside development.

The flat comprises a spacious open kitchen with a stylishly attached dining area, a magnificent living room leading to a private balcony, one bright bedroom and one modern bathroom.

The residents of the apartment benefits from balcony, concierge and stunning communal riverside green space.

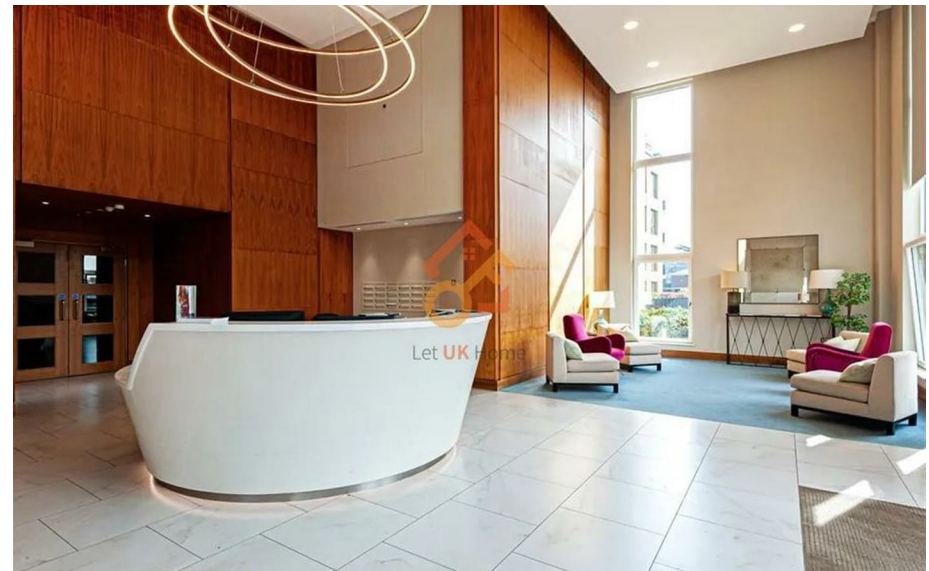
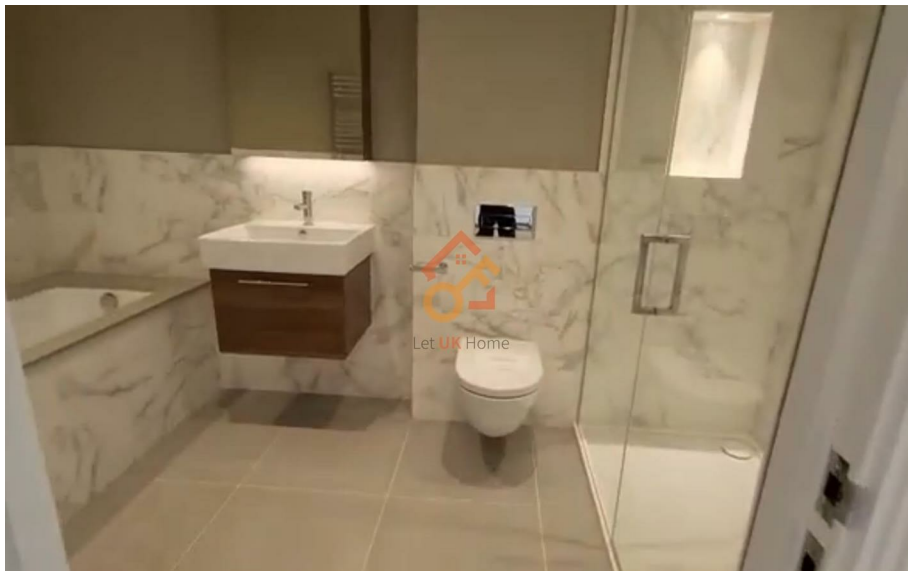
Teddington Village is located just a few minutes walk from the development. The property is within easy reach of Teddington High Street which provides you with a multitude of independent cafes, bars, and restaurants. There are also many entertainment venues including the Landmark Centre and the prestigious Lensbury Club which is a world-class private members' club that is perfect for family leisure time, offering Gym, swimming pool, as well as massages and othertreatments, watersports, tennic centre, etc. Other notable places include Hampton Court Palace and Bushy Park. Teddington train station is a short walk from the development, offering regular train services to London Waterloo, Wimbledon and Shepperton. The nearest bus stop is also within walking distance from the development, providing easy access to Richmond, Kingston and Heathrow Airports.

# Flat 32, Carlton House, 2, Pinewood Gardens

£2,625 Per Month



- 3rd Floor
- Teddington Riverside
- Communal Green Space
- Private Balcony
- 24h Security



1 BEDROOM

60 SQ M / 646 SQ FT



APARTMENT  
LOCATOR



FLOOR 4
FLOOR 3
FLOOR 2
FLOOR 1
GROUND FLOOR

TOTAL APARTMENT AREA	60 SQ M	646 SQ FT	TOTAL BALCONY AREA	4 SQ M	43 SQ FT
LIVING / KITCHEN / DINING	4.15 M X 7.28 M	13'7" X 23'10"	BATHROOM	1.67 M X 3.61 M	5'6" X 11'10"
BEDROOM	3.19 M X 3.64 M	10'5" X 11'11"	BALCONY	3.16 M X 1.29 M	10'4" X 4'3"

Floor plans are not to scale and are indicative only. Location of windows, doors, bathroom fittings, kitchen units and appliances may differ. Dimensions given are approximate and should not be used to order carpets or furniture. Balcony and terrace sizes and locations may differ to those illustrated. For full terms and conditions, please see page 80.



萊英家  
Let **UK** Home

6/F Two Kingdom Street

London

W2 6BD

020 4534 8145

pmadmin@letukhome.co.uk

**Council Tax Band: E**

**Local Authority:**

Agents Note: Whilst every care has been taken to prepare these particulars, they are for guidance purposes only. All measurements are approximate and are for general guidance purposes only and whilst every care has been taken to ensure their accuracy, they should not be relied upon and potential buyers/tenants are advised to recheck the measurements.

Energy Efficiency Rating		Current	Potential
Very energy efficient - lower running costs			
(92 plus) A		86	86
(81-91) B			
(69-80) C			
(55-68) D			
(39-54) E			
(21-38) F			
(1-20) G			
Not energy efficient - higher running costs			
England & Wales		EU Directive 2002/91/EC	

<https://www.letukhome.co.uk/>