



萊英家  
Let UK Home

2 Bedrooms

Flat

Located in London

£3,200 Per Month



[pmadmin@letukhome.co.uk](mailto:pmadmin@letukhome.co.uk)

<https://www.letukhome.co.uk/>

020 4534 8145



# Apartment 102 3 Television Centre, 101 Wood Lane

## London | | W12 7FS



Let UK Home are excited to offer this spectacular two bedroom apartment in the heart of Television Centre development located in White City, W12.

This property comprises a large bright open plan kitchen and living room leading to a large private balcony with great views, two double bedrooms with wardrobes(master with ensuite), a large family sized bathroom and ample storage.

Residents benefit from a range of amenities including 24-hour concierge, residents lounge, screening room and meeting rooms. The Soho House managed gym occupies a circular space under the building with a luxury spa and 17 meter swimming pool.

Take a short walk and you will find a bustling town centre and Westfield shopping centre with niche coffee shops to satisfy even the most demanding high street shopper. Sitting pretty on the Centre Line & Hammersmith and City Line offers excellent transport links to both the centre of London and the rest of Europe via Heathrow. Imperial College London White City Campus and RCA White City are also within walking distance of the flat.

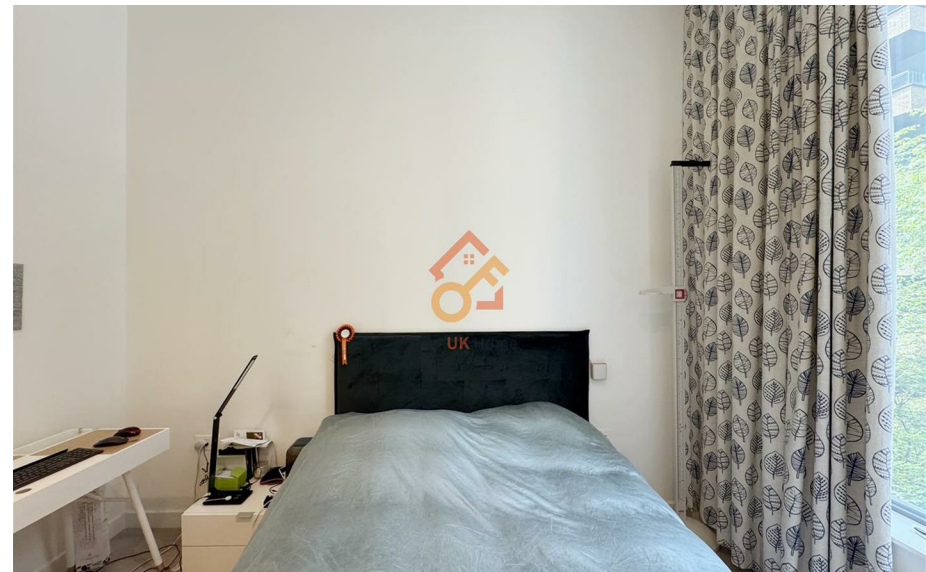


# Apartment 102 3 Television Centre, 101 Wood Lane

£3,200 Per Month



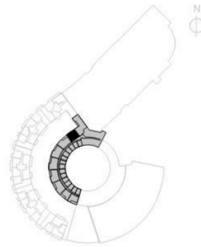
- 1st Floor
- 24h Security
- Swimming Pool
- Residents Lounge
- Co-working Space
- Concierge Service
- The Spa
- The Gym
- Cinema & Game Room
- Sauna & Steam Room



2 bedroom  
**Apartment H.102**

1st floor

Net saleable area	sq m	sq ft
	81.00	872
Room dimensions	m	ft
Living area	4.70 x 6.90	15'5" x 22'8"
Bedroom 1	2.80 x 3.40	9'2" x 11'2"
Bedroom 2	3.00 x 3.70	9'10" x 12'2"
<b>Other</b>		
Outside space: balcony		



6/F Two Kingdom Street

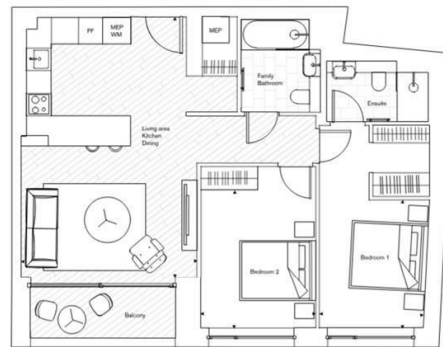
London

W2 6BD

020 4534 8145

pmadmin@letukhome.co.uk

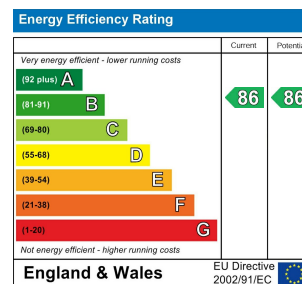
122  
123



**Council Tax Band: F**

**Local Authority:**

Agents Note: Whilst every care has been taken to prepare these particulars, they are for guidance purposes only. All measurements are approximate and are for general guidance purposes only and whilst every care has been taken to ensure their accuracy, they should not be relied upon and potential buyers/tenants are advised to recheck the measurements.



<https://www.letukhome.co.uk/>