



萊英家

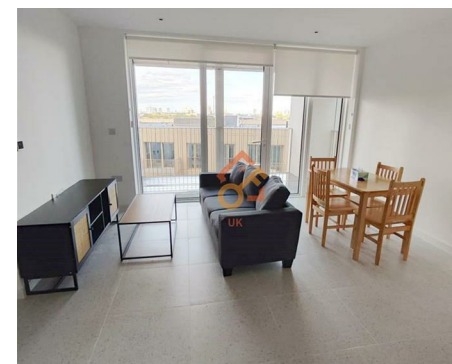
Let UK Home

2 Bedrooms

Flat

Located in London

£3,500 Per Month



padmin@letukhome.co.uk

<https://www.letukhome.co.uk/>

020 4534 8145



Flat 803, Bouchon Point 7 Cendal Crescent

London | | E1 2FT



Let UK Home are excited to offer this spectacular two bedroom apartment in the heart of Silk District in Whitechapel.

This property comprises a large bright open plan kitchen and living room leading to a large private balcony with great views, two double bedrooms with wardrobes (master en-suite), a large family sized bathroom and ample storage.

The apartment includes 24-hour concierge service, gym, spinning room, screening room and terrace, flexible and designed work and study space, etc.

The apartment is just one street away from Whitechapel subway station. At the same time, Whitechapel station is also a transportation hub for the District and Hammersmith & City subway lines. From here, you can quickly reach the City of London, Canary Wharf and other places.

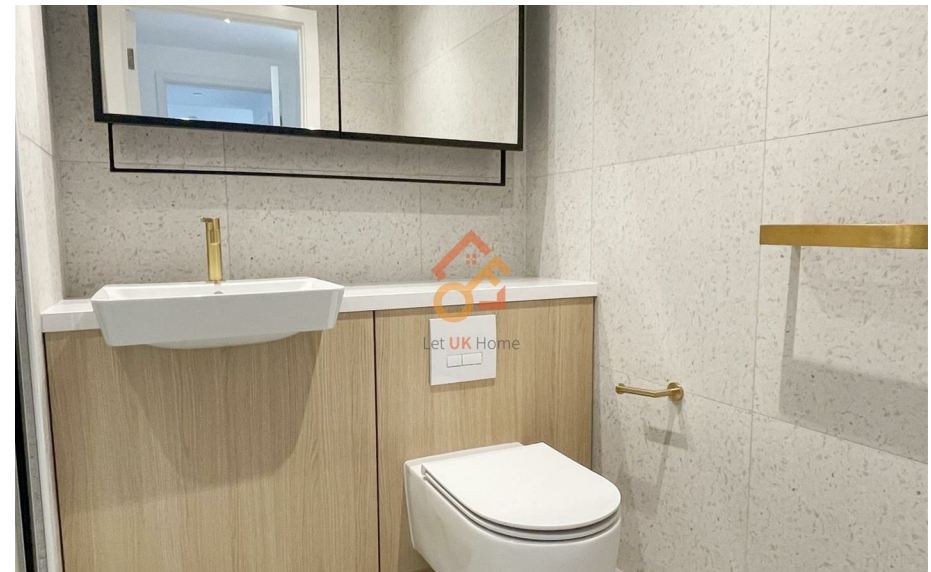
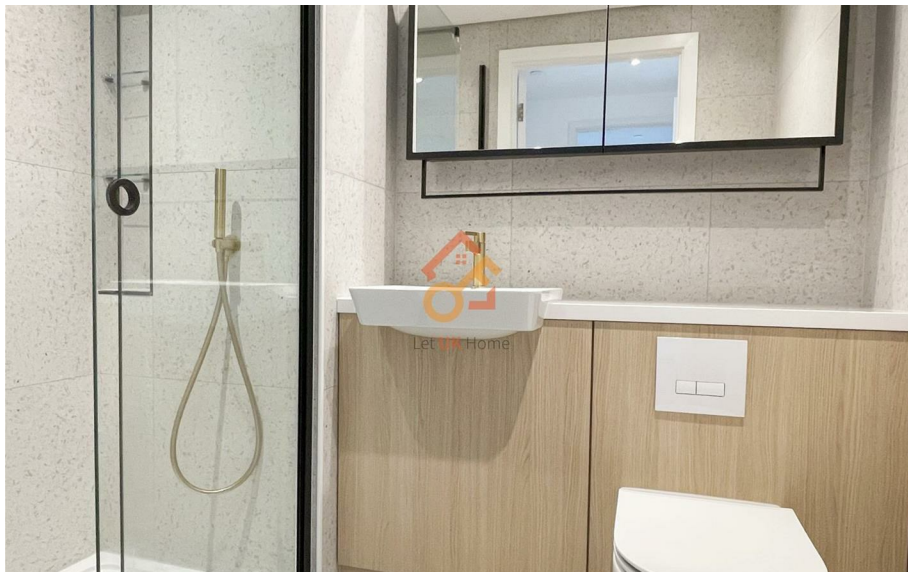
Within walking distance of the apartment, there is a large Sainsbury's shopping center, Asda department store, White Chapel Post Office and the famous Barclays Bank.

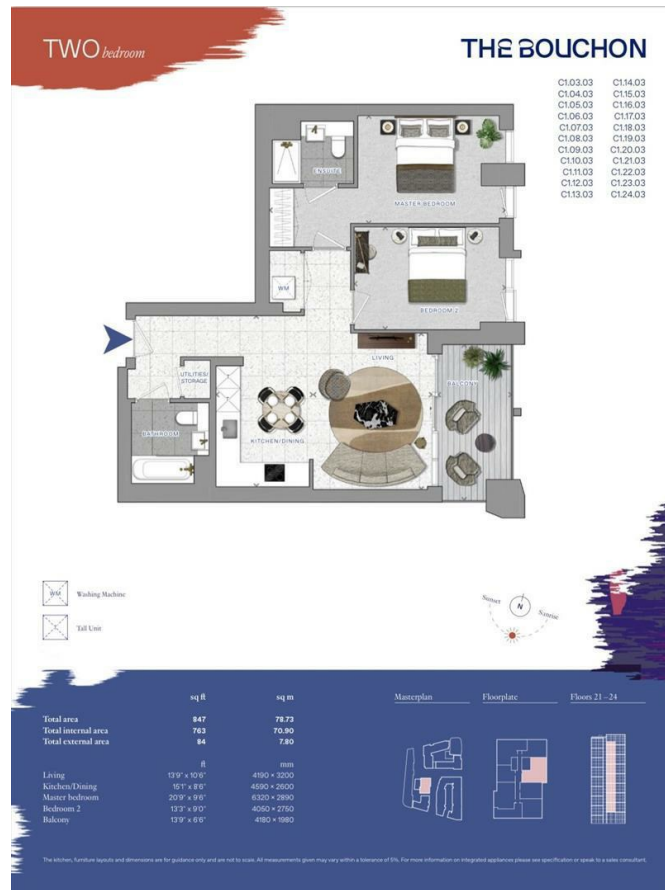
Flat 803, Bouchon Point 7 Cendal Crescent

£3,500 Per Month



- 8th Floor
- The Gym
- Cinema & Game Room
- Concierge Service
- 24h Security





萊英家
Let **UK** Home

6/F Two Kingdom Street

London

W2 6BD

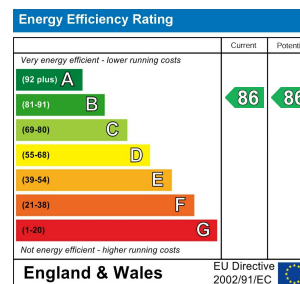
020 4534 8145

pmadmin@letukhome.co.uk

Council Tax Band: F

Local Authority:

Agents Note: Whilst every care has been taken to prepare these particulars, they are for guidance purposes only. All measurements are approximate and are for general guidance purposes only and whilst every care has been taken to ensure their accuracy, they should not be relied upon and potential buyers/tenants are advised to recheck the measurements.



<https://www.letukhome.co.uk/>