



萊英家

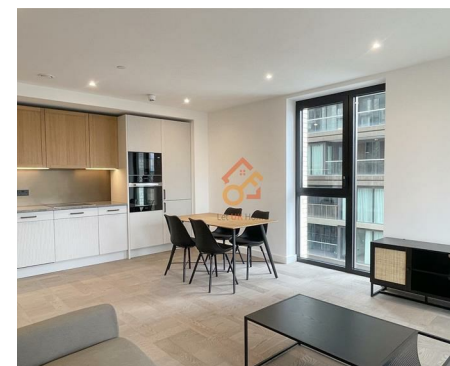
Let UK Home

2 Bedrooms

Flat

Located in London

£4,200 Per Month



pmadmin@letukhome.co.uk

<https://www.letukhome.co.uk/>

020 4534 8145



Apartment 601 2 Merino Gardens

London | | E1W 2DR



Let UK Home are excited to offer this spectacular two bedroom apartment in the heart of Merino Gardens part of the London Dock.

This property comprises a large bright open plan kitchen and living room with great views, two double bedrooms with fitted wardrobes (master en-suite), a large family sized bathroom and ample storage.

Residents will benefit from a 24-hour concierge and onsite fitness facilities including swimming pool, vitality pool, steam room and sauna, gym and fitness studios.

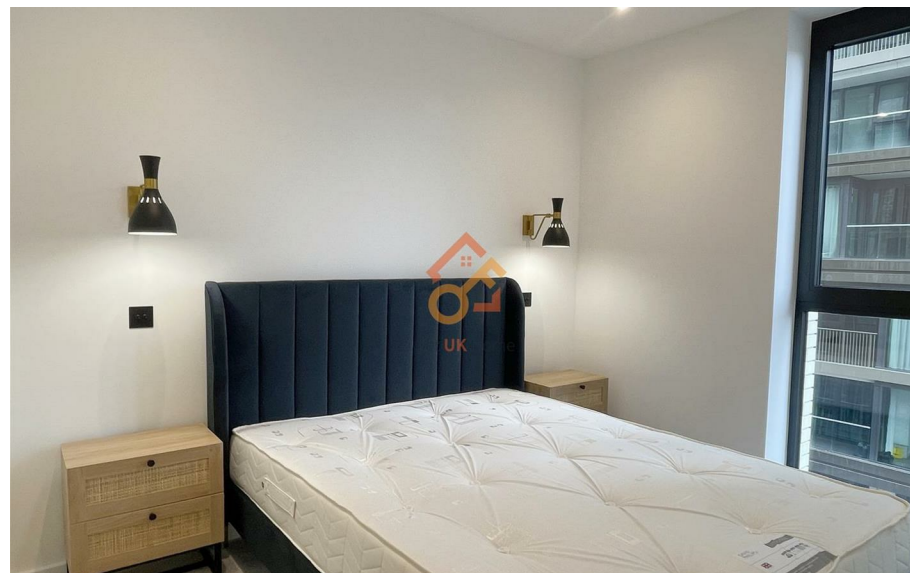
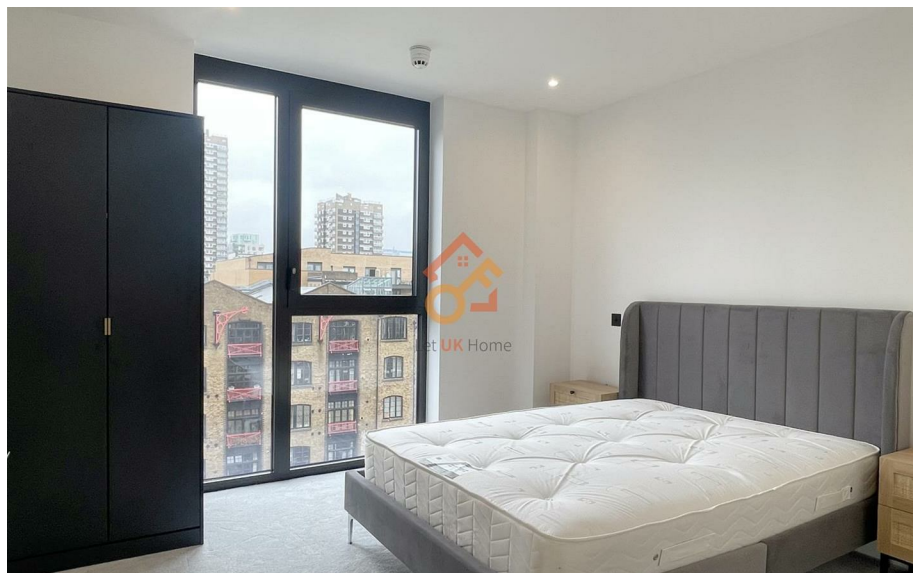
The development is located near the riverside, surrounded by beautiful squares and boulevards, close to City of London and St Katharine Docks. The world-famous Tower Bridge is within walking distance. Gauging Square is the center of the entire community, lined with restaurants, cafes and bars. The supermarket-Sainsbury's brings ease and convenience to residents' daily life.

Apartment 601 2 Merino Gardens

£4,200 Per Month



- 6th Floor
- 24h Security
- The Gym
- Cinema & Game Room
- Concierge Service
- Swimming Pool
- Virtual Golf Suite





萊英家
Let **UK** Home

6/F Two Kingdom Street

London

W2 6BD

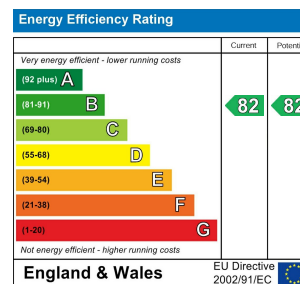
020 4534 8145

pmadmin@letukhome.co.uk

Council Tax Band: F

Local Authority:

Agents Note: Whilst every care has been taken to prepare these particulars, they are for guidance purposes only. All measurements are approximate and are for general guidance purposes only and whilst every care has been taken to ensure their accuracy, they should not be relied upon and potential buyers/tenants are advised to recheck the measurements.



<https://www.letukhome.co.uk/>