



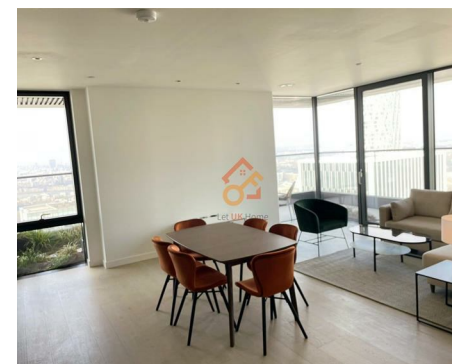
萊英家
Let **UK** Home

2 Bedrooms

Flat

Located in London

£4,500 Per Month



pmadmin@letukhome.co.uk

<https://www.letukhome.co.uk/>

020 4534 8145



4606 Bagshaw Building 1 Wards Place

London | | E14 9EJ



Let UK Home present this stunning 2 bedroom property in Bagshaw Building, part of Warden, in Canary Wharf, E14.

This property comprises a large bright open plan kitchen and living room leading to a large private balcony with great views, two double bedrooms with fitted wardrobes (master en-suite), a large family sized bathroom and ample storage.

Residents will benefit from a 24-hour concierge and onsite fitness facilities including swimming pool, vitality pool, steam room and sauna, gym and fitness studios. In addition, parking space is available.

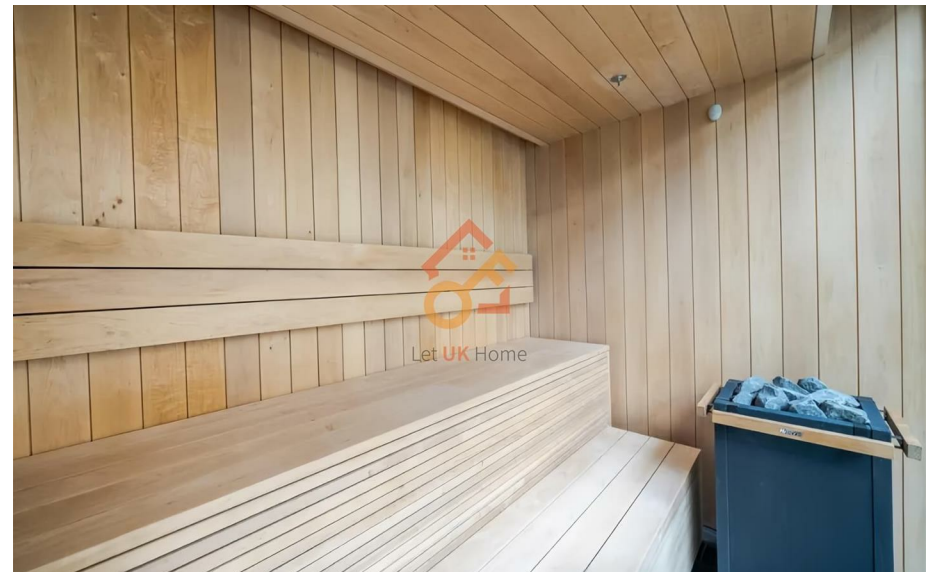
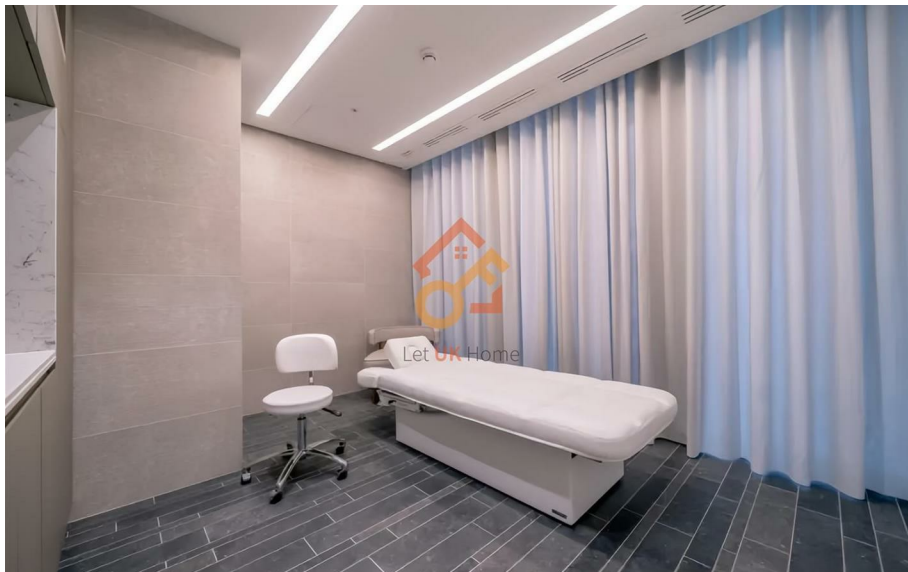
The apartment is located in a prosperous and prime location in the center of London, surrounded by skyscrapers and various commercial and entertainment facilities. It is within walking distance to the European headquarters of major financial institutions, various art and cultural venues, sports venues, restaurants and bars. A variety of restaurants and boutique shops make this apartment a convenient life.

4606 Bagshaw Building 1 Wards Place

£4,500 Per Month



- 46th Floor
- 24h Security
- The Spa
- Cinema & Game Room
- Residents Lounge
- Swimming Pool
- Concierge Service
- The Gym
- Sauna & Steam Room
- Parking Space





萊英家
 Let **UK** Home

6/F Two Kingdom Street
 London
 W2 6BD

020 4534 8145

pmadmin@letukhome.co.uk

Council Tax Band: F

Local Authority:

Agents Note: Whilst every care has been taken to prepare these particulars, they are for guidance purposes only. All measurements are approximate and are for general guidance purposes only and whilst every care has been taken to ensure their accuracy, they should not be relied upon and potential buyers/tenants are advised to recheck the measurements.

| Energy Efficiency Rating | | Current | Potential |
|---|--|-------------------------|-----------|
| Very energy efficient - lower running costs | | | |
| (92 plus) A | | | |
| (81-91) B | | 85 | 85 |
| (69-80) C | | | |
| (55-68) D | | | |
| (39-54) E | | | |
| (21-38) F | | | |
| (1-20) G | | | |
| Not energy efficient - higher running costs | | | |
| England & Wales | | EU Directive 2002/91/EC | |

<https://www.letukhome.co.uk/>